

## Product datasheet for **TA350494S**

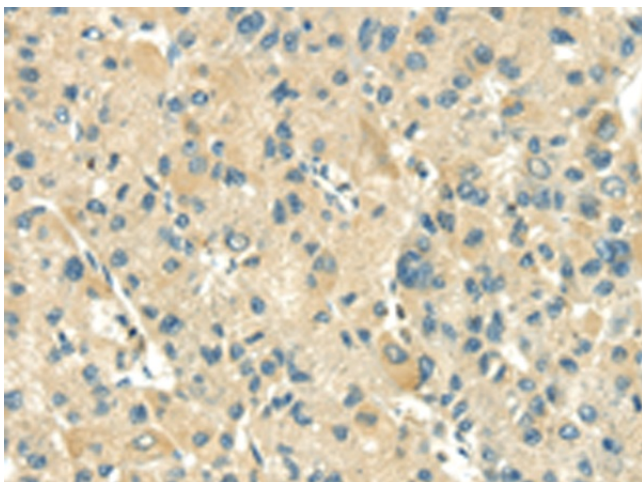
### Thioredoxin 2 (TXN2) Rabbit Polyclonal Antibody

#### Product data:

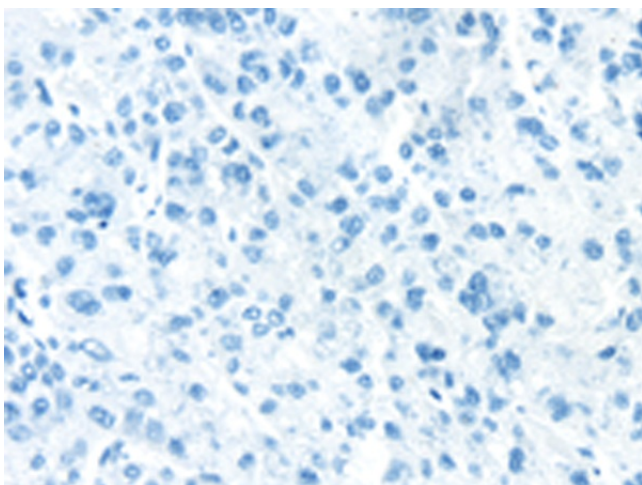
Product Type:	Primary Antibodies
Applications:	IHC
Recommended Dilution:	IHC: 25-100 Positive control: Human liver cancer Predicted cell location: Cytoplasm
Reactivity:	Human, Mouse, Rat
Host:	Rabbit
Isotype:	IgG
Clonality:	Polyclonal
Immunogen:	Full length fusion protein
Formulation:	pH7.4 PBS, 0.05% NaN <sub>3</sub> , 40% Glycerol
Purification:	Antigen affinity purification
Conjugation:	Unconjugated
Storage:	Store at -20°C as received.
Stability:	Stable for 12 months from date of receipt.
Gene Name:	thioredoxin 2
Database Link:	<a href="#">NP_036605</a> <a href="#">Entrez Gene 56551 Mouse</a> <a href="#">Entrez Gene 79462 Rat</a> <a href="#">Entrez Gene 25828 Human</a> <a href="#">Q99757</a>
Background:	This nuclear gene encodes a mitochondrial member of the thioredoxin family, a group of small multifunctional redox-active proteins. The encoded protein may play important roles in the regulation of the mitochondrial membrane potential and in protection against oxidant-induced apoptosis.
Synonyms:	COXPD29; MT-TRX; MTRX; TRX2
Protein Families:	Druggable Genome



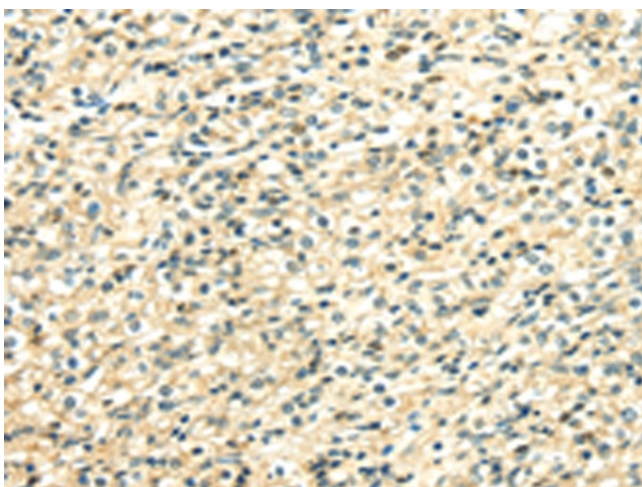
[View online »](#)

**Product images:**

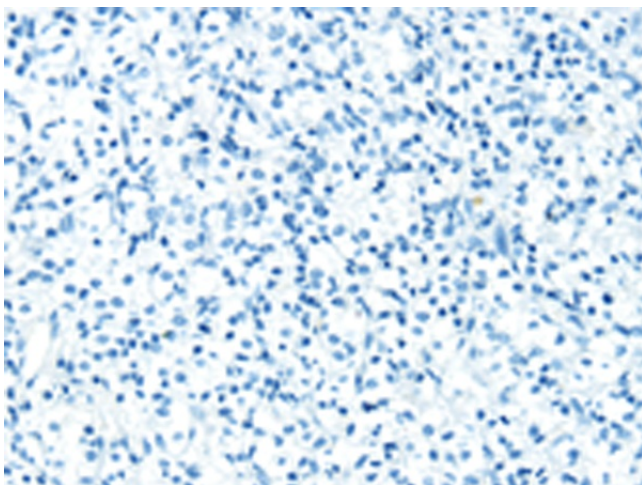
Immunohistochemistry of paraffin-embedded Human liver cancer tissue using [TA350494] (TXN2 Antibody) at dilution 1/30 (Original magnification:  $\times 200$ )



Immunohistochemistry of paraffin-embedded Human liver cancer tissue using [TA350494] (TXN2 Antibody) at dilution 1/30, treated with fusion protein. (Original magnification:  $\times 200$ )



Immunohistochemistry of paraffin-embedded Human prostate cancer tissue using [TA350494] (TXN2 Antibody) at dilution 1/30 (Original magnification:  $\times 200$ )



Immunohistochemistry of paraffin-embedded Human prostate cancer tissue using [TA350494] (TXN2 Antibody) at dilution 1/30, treated with fusion protein. (Original magnification:  $\times 200$ )