

Product datasheet for **TA350492S**

THAP4 Rabbit Polyclonal Antibody

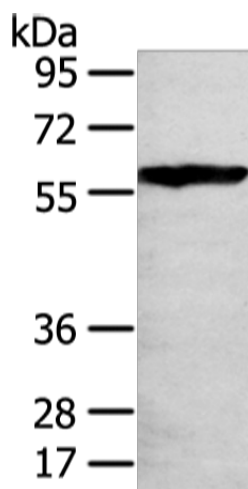
Product data:

Product Type:	Primary Antibodies
Applications:	IHC, WB
Recommended Dilution:	WB: 500–2000 WB positive control: 293T cell IHC: 25–100 Positive control: Human lung cancer Predicted cell location: Nucleus and Cytoplasm
Reactivity:	Human, Mouse, Rat
Host:	Rabbit
Isotype:	IgG
Clonality:	Polyclonal
Immunogen:	Fusion protein of human THAP4
Formulation:	pH7.4 PBS, 0.05% NaN ₃ , 40% Glycerol
Purification:	Antigen affinity purification
Conjugation:	Unconjugated
Storage:	Store at –20°C as received.
Stability:	Stable for 12 months from date of receipt.
Predicted Protein Size:	63 kDa
Gene Name:	THAP domain containing 4
Database Link:	NP_057047 Entrez Gene 67026 MouseEntrez Gene 363291 RatEntrez Gene 51078 Human Q8WY91
Background:	THAP domain-containing protein 4 is a protein that in humans is encoded by the THAP4 gene.



Synonyms: CGI-36; PP238

Product images:



Gel: 8%SDS-PAGE

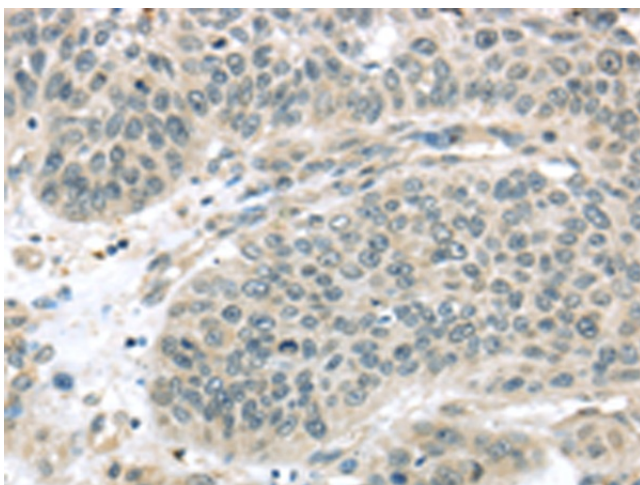
Lysate: 80 µg

Lane: 293T cell

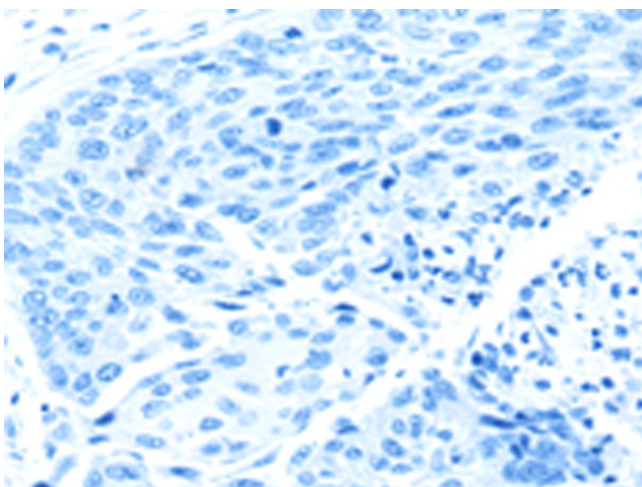
Primary antibody: [TA350492] (THAP4 Antibody) at dilution 1/250

Secondary antibody: Goat anti rabbit IgG at 1/8000 dilution

Exposure time: 10 seconds



Immunohistochemistry of paraffin-embedded Human lung cancer tissue using [TA350492] (THAP4 Antibody) at dilution 1/30 (Original magnification: ×200)



Immunohistochemistry of paraffin-embedded Human lung cancer tissue using [TA350492] (THAP4 Antibody) at dilution 1/30, treated with fusion protein. (Original magnification: $\times 200$)