

Product datasheet for **TA350491**

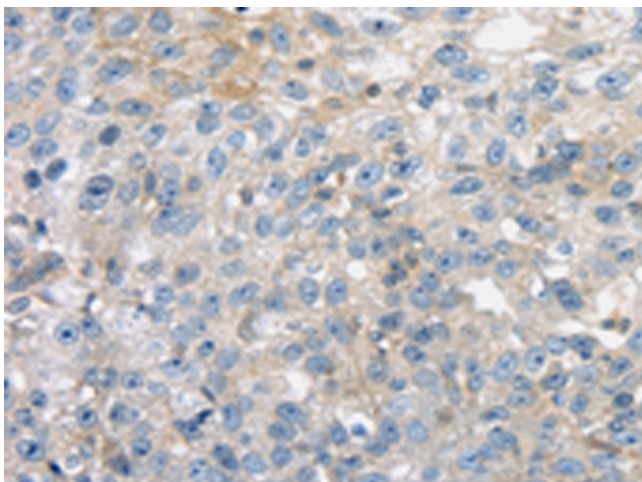
THAP2 Rabbit Polyclonal Antibody

Product data:

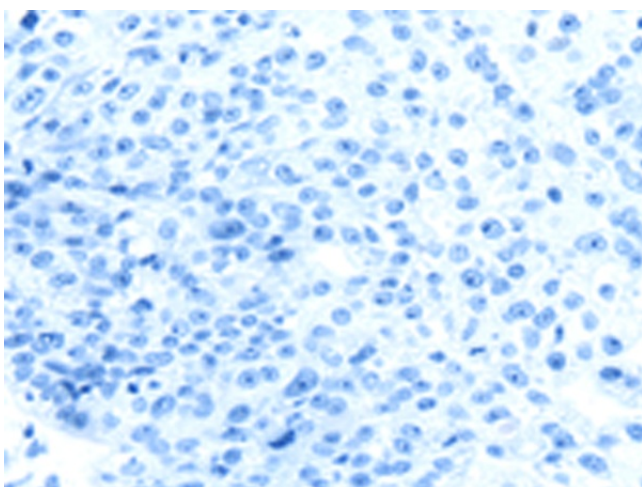
Product Type:	Primary Antibodies
Applications:	IHC
Recommended Dilution:	IHC: 25-100 Positive control: Human breast cancer Predicted cell location: Cytoplasm
Reactivity:	Human, Mouse
Host:	Rabbit
Isotype:	IgG
Clonality:	Polyclonal
Immunogen:	Full length fusion protein
Formulation:	pH7.4 PBS, 0.05% NaN ₃ , 40% Glycerol
Concentration:	lot specific
Purification:	Antigen affinity purification
Conjugation:	Unconjugated
Storage:	Store at -20°C as received.
Stability:	Stable for 12 months from date of receipt.
Gene Name:	THAP domain containing 2
Database Link:	NP_113623 Entrez Gene 83591 Human Q9H0W7
Background:	THAP2, also named as THAP domain-containing protein 2, is a 228 amino acid protein, which contains one THAP-type zinc finger. Members of the THAP (thanatos-associated protein) family of proteins contain a well conserved DNA-binding domain known as the THAP-type zinc finger motif. Proteins containing the THAP-type zinc finger motif are commonly involved in transcriptional regulation, cell-cycle control, apoptosis and chromatin modification
Synonyms:	DKFZp564I0422



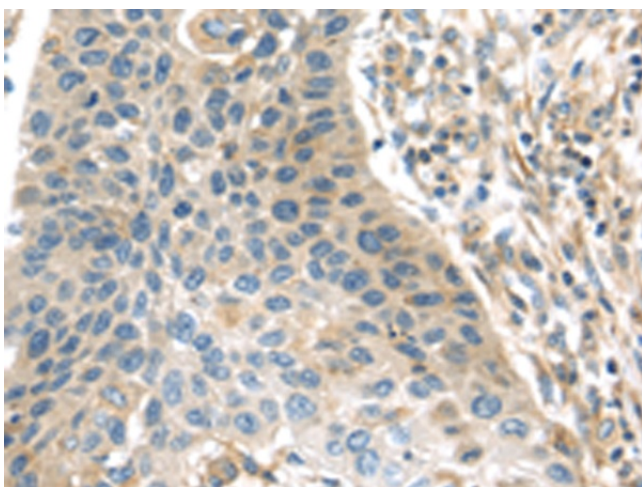
[View online »](#)

Product images:

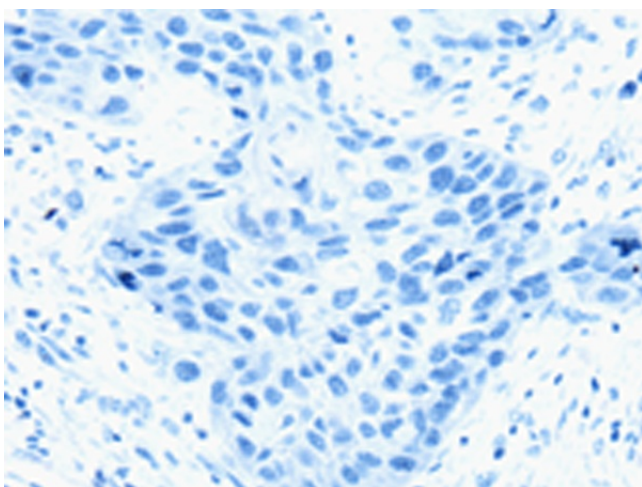
Immunohistochemistry of paraffin-embedded Human breast cancer tissue using TA350491 (THAP2 Antibody) at dilution 1/20 (Original magnification: $\times 200$)



Immunohistochemistry of paraffin-embedded Human breast cancer tissue using TA350491 (THAP2 Antibody) at dilution 1/20, treated with fusion protein. (Original magnification: $\times 200$)



Immunohistochemistry of paraffin-embedded Human esophagus cancer tissue using TA350491 (THAP2 Antibody) at dilution 1/20 (Original magnification: $\times 200$)



Immunohistochemistry of paraffin-embedded Human esophagus cancer tissue using TA350491 (THAP2 Antibody) at dilution 1/20, treated with fusion protein. (Original magnification: $\times 200$)