

Product datasheet for **TA350484**

TBLR1 (TBL1XR1) Rabbit Polyclonal Antibody

Product data:

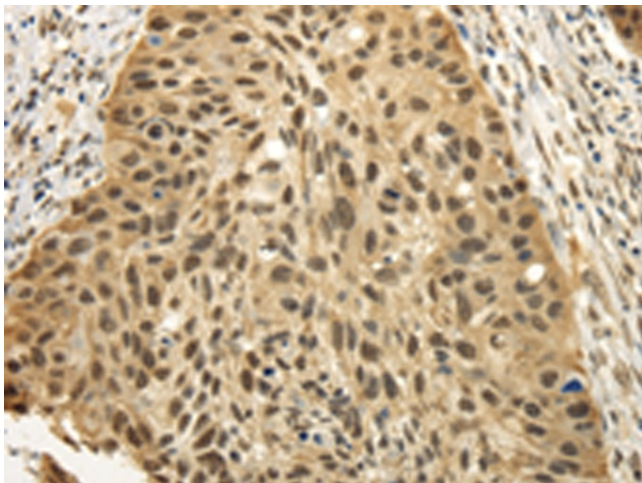
Product Type:	Primary Antibodies
Applications:	IHC
Recommended Dilution:	IHC: 25-100 Positive control: Human esophagus cancer Predicted cell location: Nucleus
Reactivity:	Human, Mouse
Host:	Rabbit
Isotype:	IgG
Clonality:	Polyclonal
Immunogen:	Fusion protein of human TBL1XR1
Formulation:	pH7.4 PBS, 0.05% NaN ₃ , 40% Glycerol
Concentration:	lot specific
Purification:	Antigen affinity purification
Conjugation:	Unconjugated
Storage:	Store at -20°C as received.
Stability:	Stable for 12 months from date of receipt.
Gene Name:	transducin (beta)-like 1 X-linked receptor 1
Database Link:	NP_078941 Entrez Gene 81004 Mouse Entrez Gene 79718 Human Q9BZK7
Background:	The protein encoded by this gene has sequence similarity with members of the WD40 repeat-containing protein family. The WD40 group is a large family of proteins, which appear to have a regulatory function. It is believed that the WD40 repeats mediate protein-protein interactions and members of the family are involved in signal transduction, RNA processing, gene regulation, vesicular trafficking, cytoskeletal assembly and may play a role in the control of cytotypic differentiation.
Synonyms:	C21; DC42; IRA1; MRD41; TBLR1
Protein Families:	Druggable Genome, Transcription Factors



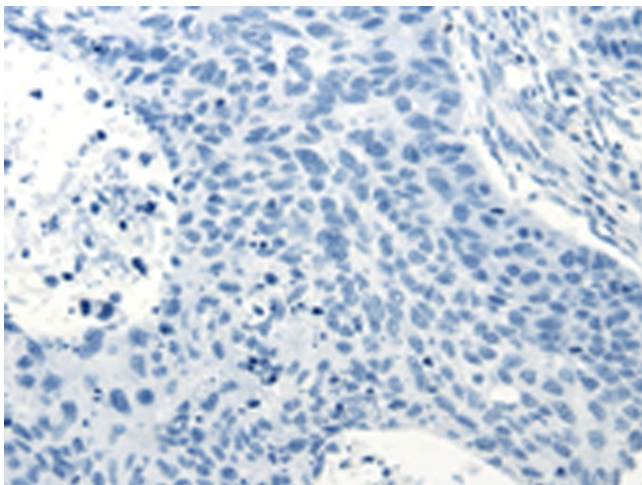
[View online »](#)

Protein Pathways: Wnt signaling pathway

Product images:



Immunohistochemistry of paraffin-embedded Human esophagus cancer tissue using TA350484 (TBL1XR1 Antibody) at dilution 1/25 (Original magnification: $\times 200$)



Immunohistochemistry of paraffin-embedded Human esophagus cancer tissue using TA350484 (TBL1XR1 Antibody) at dilution 1/25, treated with fusion protein. (Original magnification: $\times 200$)