

Product datasheet for **TA350483**

TBL1 (TBL1X) Rabbit Polyclonal Antibody

Product data:

Product Type:	Primary Antibodies
Applications:	IHC, WB
Recommended Dilution:	WB: 500-2000 WB positive control: Human lung cancer and placenta tissue IHC: 25-100 Positive control: Human breast cancer Predicted cell location: Nucleus
Reactivity:	Human, Mouse
Host:	Rabbit
Isotype:	IgG
Clonality:	Polyclonal
Immunogen:	Fusion protein of human TBL1X
Formulation:	pH7.4 PBS, 0.05% NaN ₃ , 40% Glycerol
Concentration:	lot specific
Purification:	Antigen affinity purification
Conjugation:	Unconjugated
Storage:	Store at -20°C as received.
Stability:	Stable for 12 months from date of receipt.
Predicted Protein Size:	62 kDa
Gene Name:	transducin (beta)-like 1X-linked
Database Link:	NP_005638 Entrez Gene 21372 Mouse Entrez Gene 6907 Human O60907



[View online »](#)

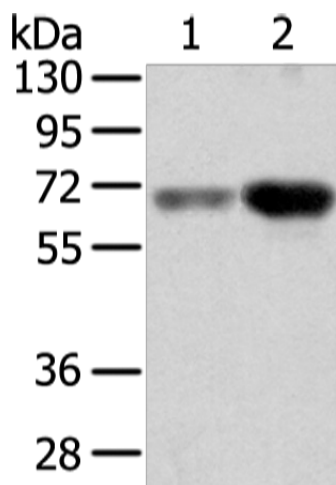
Background: The protein encoded by this gene has sequence similarity with members of the WD40 repeat-containing protein family. The WD40 group is a large family of proteins, which appear to have a regulatory function. It is believed that the WD40 repeats mediate protein-protein interactions and members of the family are involved in signal transduction, RNA processing, gene regulation, vesicular trafficking, cytoskeletal assembly and may play a role in the control of cytotypic differentiation.

Synonyms: EBI; SMAP55; TBL1

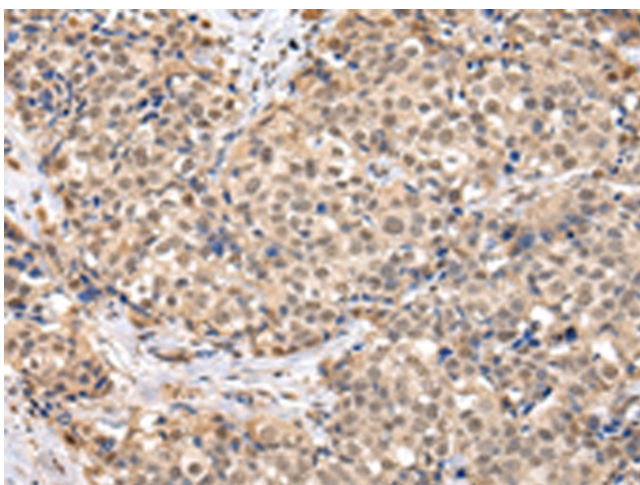
Protein Families: Transcription Factors

Protein Pathways: Wnt signaling pathway

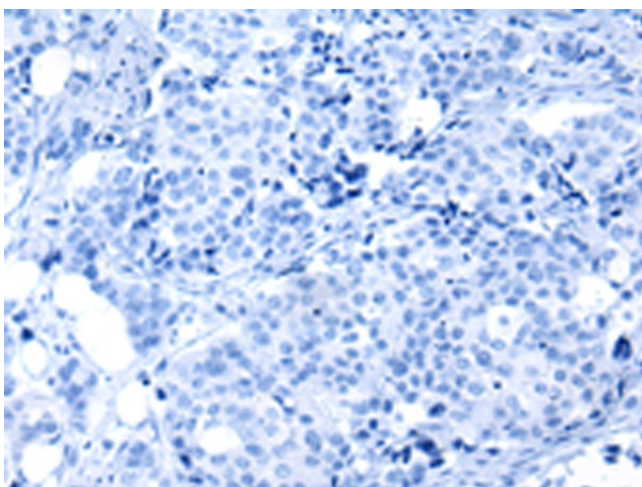
Product images:



Gel: 8%SDS-PAGE
Lysate: 40 µg
Lane 1-2: Human lung cancer and placenta tissue
Primary antibody: TA350483 (TBL1X Antibody) at dilution 1/500
Secondary antibody: Goat anti rabbit IgG at 1/8000 dilution
Exposure time: 5 seconds



Immunohistochemistry of paraffin-embedded Human breast cancer tissue using TA350483 (TBL1X Antibody) at dilution 1/30 (Original magnification: ×200)



Immunohistochemistry of paraffin-embedded Human breast cancer tissue using TA350483 (TBL1X Antibody) at dilution 1/30, treated with fusion protein. (Original magnification: ×200)