

## Product datasheet for **TA350482S**

### **TBC1D22A Rabbit Polyclonal Antibody**

#### **Product data:**

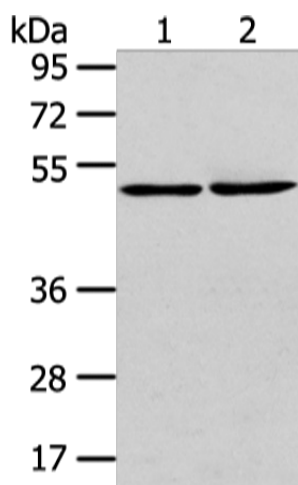
<b>Product Type:</b>	Primary Antibodies
<b>Applications:</b>	IHC, WB
<b>Recommended Dilution:</b>	WB: 500-2000 WB positive control: A431 cell and human lung cancer tissue IHC: 25-100 Positive control: Human liver cancer Predicted cell location: Cytoplasm
<b>Reactivity:</b>	Human, Mouse
<b>Host:</b>	Rabbit
<b>Isotype:</b>	IgG
<b>Clonality:</b>	Polyclonal
<b>Immunogen:</b>	Fusion protein of human TBC1D22A
<b>Formulation:</b>	pH7.4 PBS, 0.05% NaN <sub>3</sub> , 40% Glycerol
<b>Purification:</b>	Antigen affinity purification
<b>Conjugation:</b>	Unconjugated
<b>Storage:</b>	Store at -20°C as received.
<b>Stability:</b>	Stable for 12 months from date of receipt.
<b>Predicted Protein Size:</b>	59 kDa
<b>Gene Name:</b>	TBC1 domain family member 22A
<b>Database Link:</b>	<a href="#">NP_055161</a> <a href="#">Entrez Gene 223754 Mouse</a> <a href="#">Entrez Gene 25771 Human</a> <a href="#">Q8WUA7</a>
<b>Background:</b>	TBC1D22A (TBC1 domain family, member 22A), also known as C22orf4, is a 517 amino acid protein that contains one Rab-GAP TBC domain and is thought to function as a GTPase-activating protein for Rab family members. Multiple isoforms of TBC1D22A exist due to alternative splicing events. The gene encoding TBC1D22A maps to human chromosome 22, which houses over 500 genes and is the second smallest human chromosome.
<b>Synonyms:</b>	C22orf4; HSC79E021



[View online »](#)

Protein Families: Druggable Genome

### Product images:



Gel: 8%SDS-PAGE

Lysate: 40  $\mu$ g

Lane 1-2: A431 cell and human lung cancer tissue

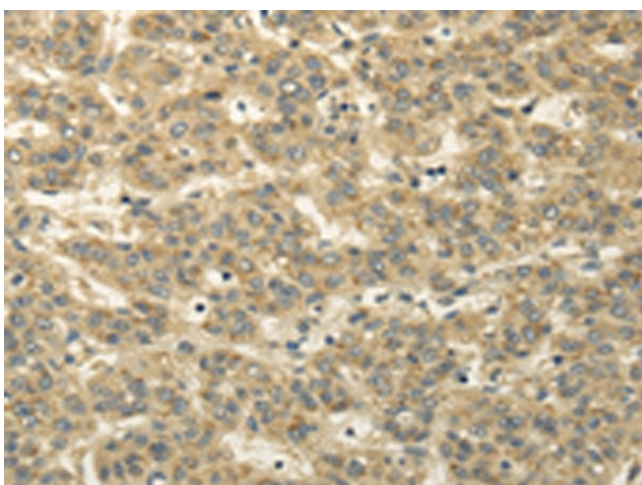
Primary antibody: [TA350482] (TBC1D22A

Antibody) at dilution 1/300

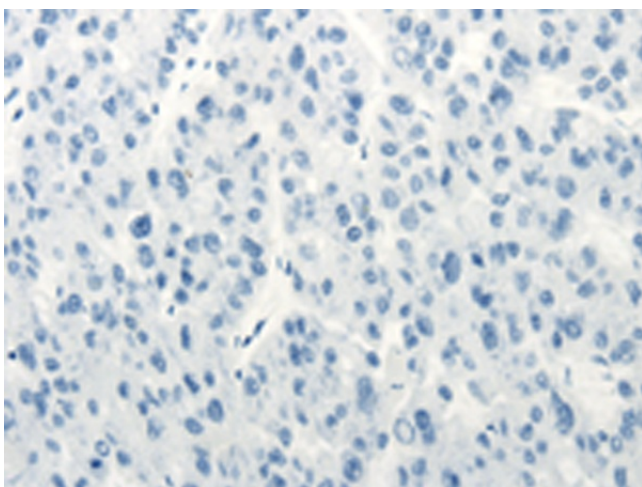
Secondary antibody: Goat anti rabbit IgG at

1/8000 dilution

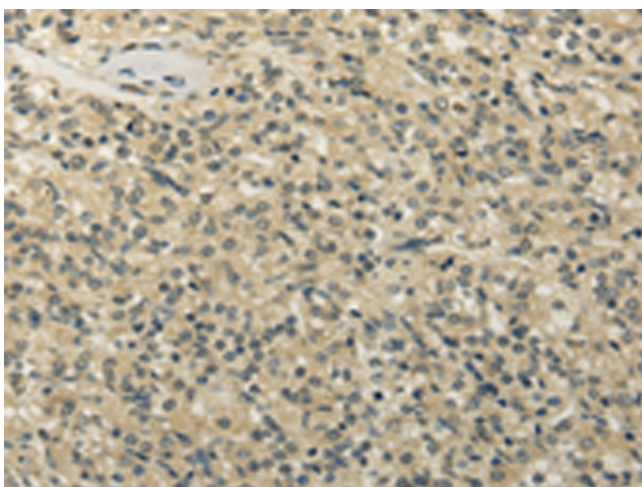
Exposure time: 1 minute



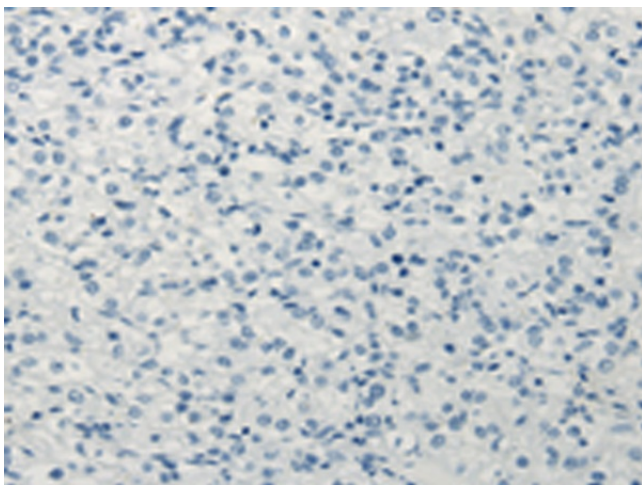
Immunohistochemistry of paraffin-embedded  
Human liver cancer tissue using [TA350482]  
(TBC1D22A Antibody) at dilution 1/20 (Original  
magnification:  $\times 200$ )



Immunohistochemistry of paraffin-embedded Human liver cancer tissue using [TA350482] (TBC1D22A Antibody) at dilution 1/20, treated with fusion protein. (Original magnification:  $\times 200$ )



Immunohistochemistry of paraffin-embedded Human prostate cancer tissue using [TA350482] (TBC1D22A Antibody) at dilution 1/20 (Original magnification:  $\times 200$ )



Immunohistochemistry of paraffin-embedded Human prostate cancer tissue using [TA350482] (TBC1D22A Antibody) at dilution 1/20, treated with fusion protein. (Original magnification:  $\times 200$ )