

Product datasheet for **TA350482**

TBC1D22A Rabbit Polyclonal Antibody

Product data:

Product Type:	Primary Antibodies
Applications:	IHC, WB
Recommended Dilution:	WB: 500-2000 WB positive control: A431 cell and human lung cancer tissue IHC: 25-100 Positive control: Human liver cancer Predicted cell location: Cytoplasm
Reactivity:	Human, Mouse
Host:	Rabbit
Isotype:	IgG
Clonality:	Polyclonal
Immunogen:	Fusion protein of human TBC1D22A
Formulation:	pH7.4 PBS, 0.05% NaN ₃ , 40% Glycerol
Concentration:	lot specific
Purification:	Antigen affinity purification
Conjugation:	Unconjugated
Storage:	Store at -20°C as received.
Stability:	Stable for 12 months from date of receipt.
Predicted Protein Size:	59 kDa
Gene Name:	TBC1 domain family member 22A
Database Link:	NP_055161 Entrez Gene 223754 Mouse Entrez Gene 25771 Human Q8WUA7
Background:	TBC1D22A (TBC1 domain family, member 22A), also known as C22orf4, is a 517 amino acid protein that contains one Rab-GAP TBC domain and is thought to function as a GTPase-activating protein for Rab family members. Multiple isoforms of TBC1D22A exist due to alternative splicing events. The gene encoding TBC1D22A maps to human chromosome 22, which houses over 500 genes and is the second smallest human chromosome.

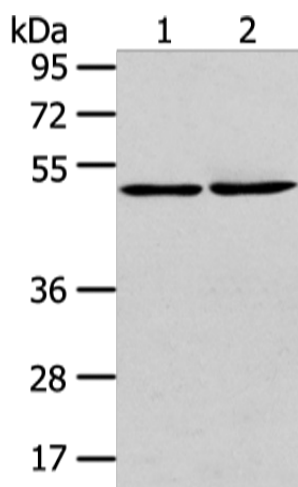


[View online »](#)

Synonyms: C22orf4; HSC79E021

Protein Families: Druggable Genome

Product images:



Gel: 8%SDS-PAGE

Lysate: 40 μ g

Lane 1-2: A431 cell and human lung cancer tissue

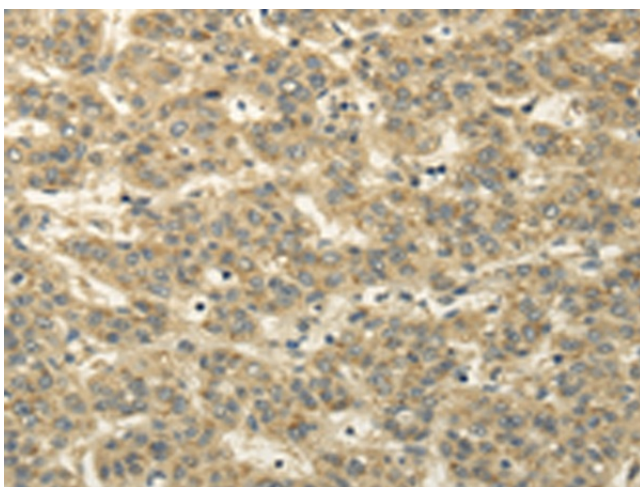
Primary antibody: TA350482 (TBC1D22A

Antibody) at dilution 1/300

Secondary antibody: Goat anti rabbit IgG at

1/8000 dilution

Exposure time: 1 minute

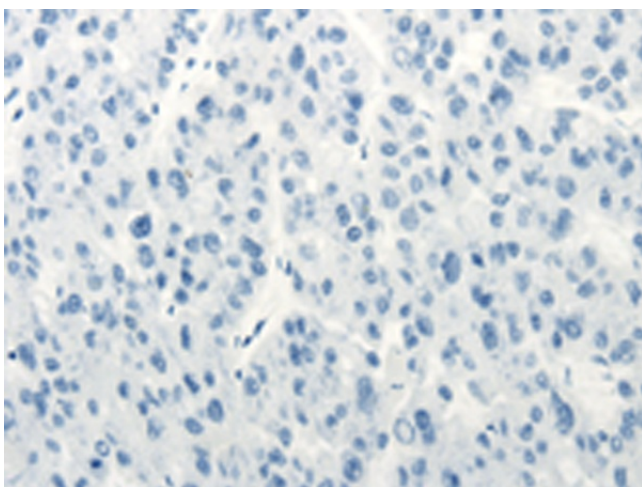


Immunohistochemistry of paraffin-embedded

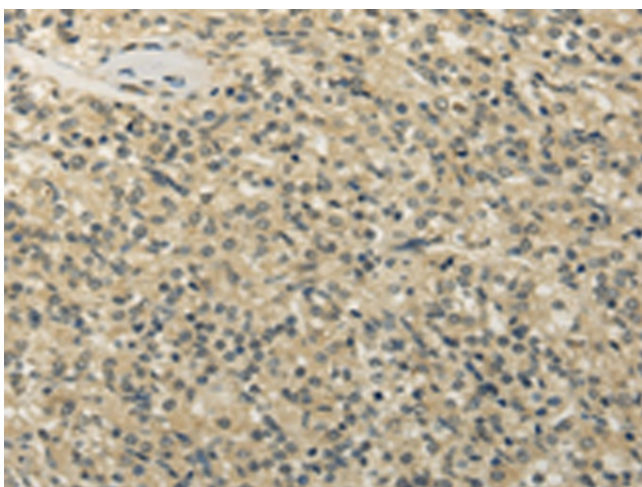
Human liver cancer tissue using TA350482

(TBC1D22A Antibody) at dilution 1/20 (Original

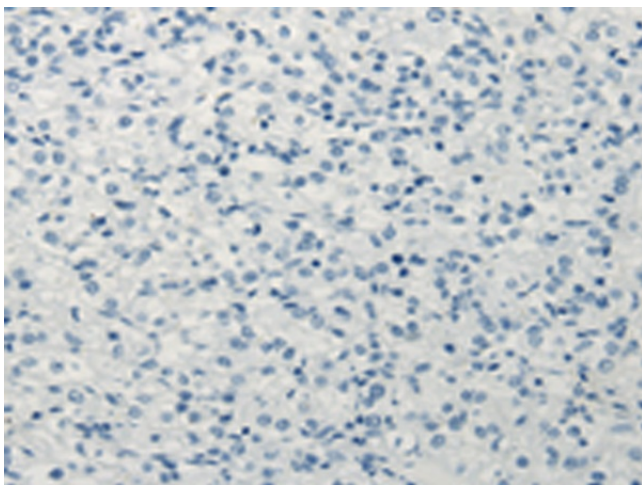
magnification: \times 200)



Immunohistochemistry of paraffin-embedded Human liver cancer tissue using TA350482 (TBC1D22A Antibody) at dilution 1/20, treated with fusion protein. (Original magnification: ×200)



Immunohistochemistry of paraffin-embedded Human prostate cancer tissue using TA350482 (TBC1D22A Antibody) at dilution 1/20 (Original magnification: ×200)



Immunohistochemistry of paraffin-embedded Human prostate cancer tissue using TA350482 (TBC1D22A Antibody) at dilution 1/20, treated with fusion protein. (Original magnification: ×200)