

Product datasheet for **TA350480S**

TAK1 (MAP3K7) Rabbit Polyclonal Antibody

Product data:

| | |
|-----------------------|---|
| Product Type: | Primary Antibodies |
| Applications: | IHC, WB |
| Recommended Dilution: | WB: 500-2000 WB positive control: HEPG2 cell lysate IHC: 10-50 Positive control: Human esophagus cancer Predicted cell location: Cytoplasm and Cell membrane |
| Reactivity: | Human, Mouse, Rat |
| Host: | Rabbit |
| Isotype: | IgG |
| Clonality: | Polyclonal |
| Immunogen: | Fusion protein of human MAP3K7 |
| Formulation: | pH7.4 PBS, 0.05% NaN ₃ , 40% Glycerol |
| Purification: | Antigen affinity purification |
| Conjugation: | Unconjugated |
| Storage: | Store at -20°C as received. |
| Stability: | Stable for 12 months from date of receipt. |
| Gene Name: | mitogen-activated protein kinase kinase kinase 7 |
| Database Link: | NP_663304 Entrez Gene 26409 Mouse Entrez Gene 313121 Rat Entrez Gene 6885 Human O43318 |
| Background: | The protein encoded by this gene is a member of the serine/threonine protein kinase family. This kinase mediates the signaling transduction induced by TGF beta and morphogenetic protein (BMP), and controls a variety of cell functions including transcription regulation and apoptosis. In response to IL-1, this protein forms a kinase complex including TRAF6, MAP3K7P1/TAB1 and MAP3K7P2/TAB2; this complex is required for the activation of nuclear factor kappa B. This kinase can also activate MAPK8/JNK, MAP2K4/MKK4, and thus plays a role in the cell response to environmental stresses. Four alternatively spliced transcript variants encoding distinct isoforms have been reported. |

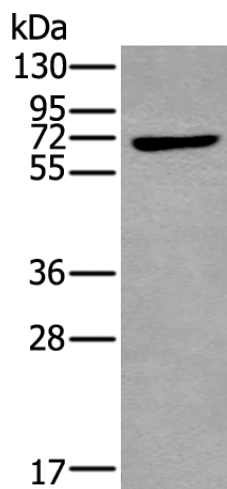


[View online »](#)

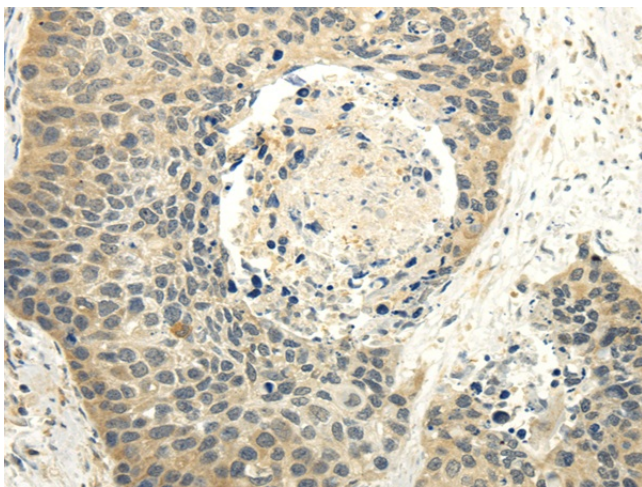
Synonyms: MEKK7; TAK1; TGF1a

Protein Families: Druggable Genome, Protein Kinase

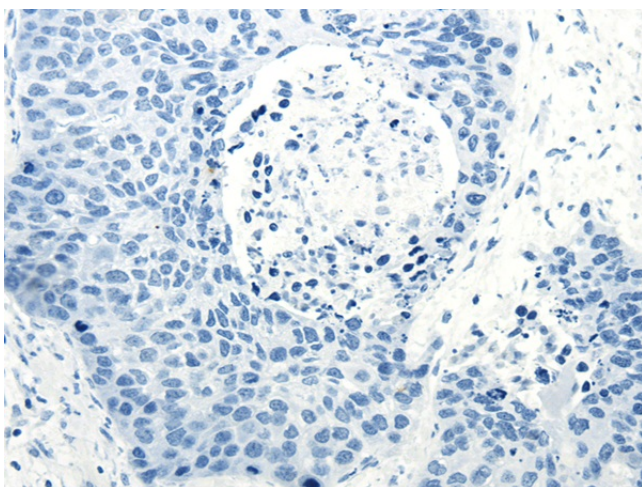
Protein Pathways: Adherens junction, MAPK signaling pathway, NOD-like receptor signaling pathway, RIG-I-like receptor signaling pathway, T cell receptor signaling pathway, Toll-like receptor signaling pathway, Wnt signaling pathway

Product images:

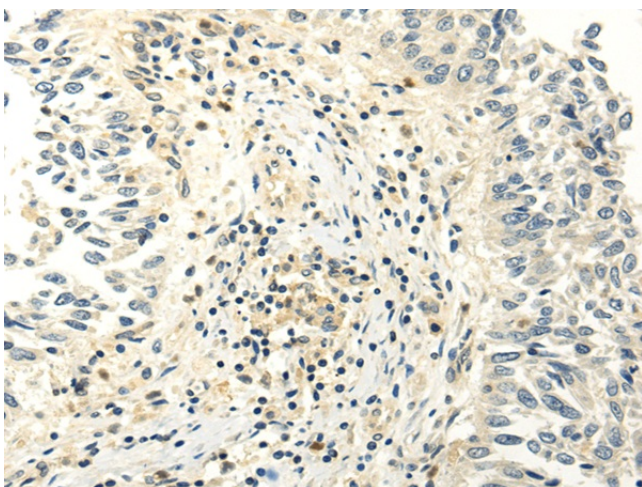
Gel: 8%SDS-PAGE
Lysate: 40 µg
Lane: HEPG2 cell lysate
Primary antibody: [TA350480] (MAP3K7 Antibody) at dilution 1/250
Secondary antibody: Goat anti rabbit IgG at 1/8000 dilution
Exposure time: 1 minute



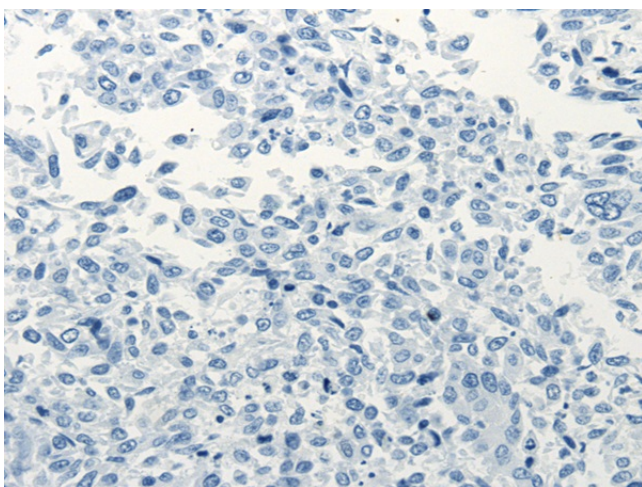
Immunohistochemistry of paraffin-embedded Human esophagus cancer tissue using [TA350480] (MAP3K7 Antibody) at dilution 1/20 (Original magnification: ×200)



Immunohistochemistry of paraffin-embedded Human esophagus cancer tissue using [TA350480] (MAP3K7 Antibody) at dilution 1/20, treated with fusion protein. (Original magnification: x200)



Immunohistochemistry of paraffin-embedded Human lung cancer tissue using [TA350480] (MAP3K7 Antibody) at dilution 1/20 (Original magnification: x200)



Immunohistochemistry of paraffin-embedded Human lung cancer tissue using [TA350480] (MAP3K7 Antibody) at dilution 1/20, treated with fusion protein. (Original magnification: x200)