

## Product datasheet for **TA350473**

### Syntaxin 18 (STX18) Rabbit Polyclonal Antibody

#### Product data:

Product Type:	Primary Antibodies
Applications:	IHC, WB
Recommended Dilution:	WB: 500-2000 WB positive control: Hepg2, TM4 and Raw264.7 cells IHC: 25-100 Positive control: Human liver cancer Predicted cell location: Cytoplasm
Reactivity:	Human, Mouse, Rat
Host:	Rabbit
Isotype:	IgG
Clonality:	Polyclonal
Immunogen:	Fusion protein of human STX18
Formulation:	pH7.4 PBS, 0.05% NaN <sub>3</sub> , 40% Glycerol
Concentration:	lot specific
Purification:	Antigen affinity purification
Conjugation:	Unconjugated
Storage:	Store at -20°C as received.
Stability:	Stable for 12 months from date of receipt.
Predicted Protein Size:	39 kDa
Gene Name:	syntaxin 18
Database Link:	<a href="#">NP_058626</a> <a href="#">Entrez Gene 71116 Mouse</a> <a href="#">Entrez Gene 360953 Rat</a> <a href="#">Entrez Gene 53407 Human</a> <a href="#">Q9P2W9</a>



[View online »](#)

**Background:**

Syntaxins, a family of proteins involved in the fusion of synaptic vesicles with the plasma membrane, display broad tissue distribution and contain carboxy-terminal hydrophobic domains that direct themselves to their respective intracellular compartments. Syntaxin 18 mainly localizes to the endoplasmic reticulum (ER), and functions in transport between the ER and Golgi. Syntaxin 18 also plays a role in ER-mediated phagocytosis, possibly by regulating the specific fusion of the ER and plasma or phagosomal membranes.

**Synonyms:**

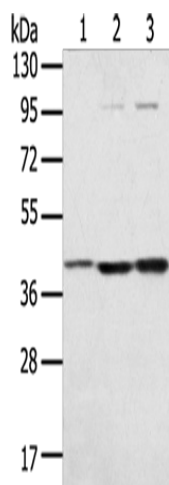
Ufe1

**Protein Families:**

Transmembrane

**Protein Pathways:**

SNARE interactions in vesicular transport

**Product images:**

Gel: 8%SDS-PAGE

Lysate: 40 µg

Lane 1-3: Hepg2 cells

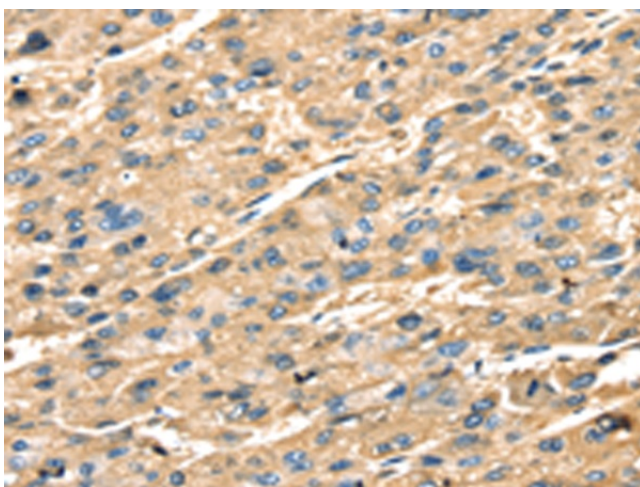
TM4 cells

Raw264.7 cells

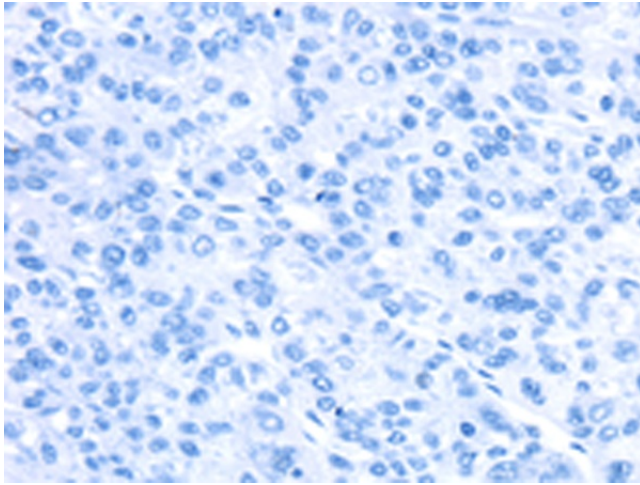
Primary antibody: TA350473 (STX18 Antibody) at dilution 1/300

Secondary antibody: Goat anti rabbit IgG at 1/8000 dilution

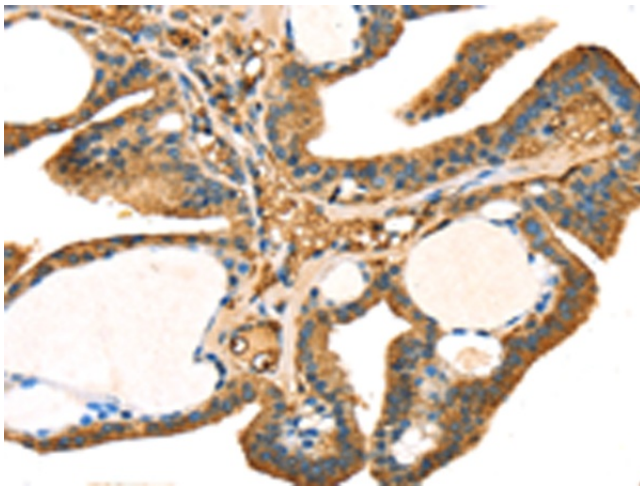
Exposure time: 20 seconds



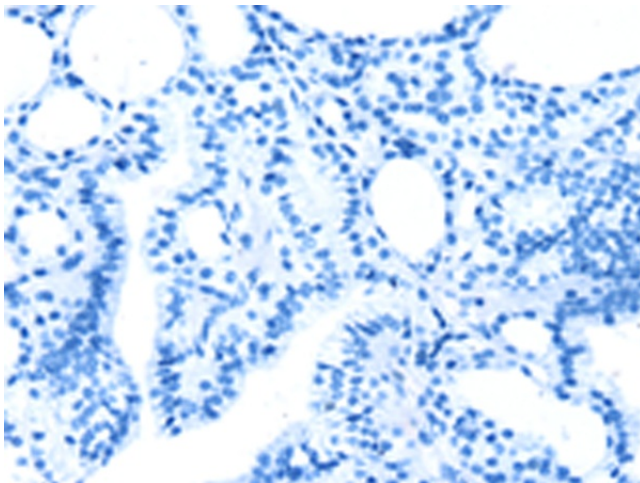
Immunohistochemistry of paraffin-embedded Human liver cancer tissue using TA350473 (STX18 Antibody) at dilution 1/25 (Original magnification: ×200)



Immunohistochemistry of paraffin-embedded Human liver cancer tissue using TA350473 (STX18 Antibody) at dilution 1/25, treated with fusion protein. (Original magnification: x200)



Immunohistochemistry of paraffin-embedded Human thyroid cancer tissue using TA350473 (STX18 Antibody) at dilution 1/25 (Original magnification: x200)



Immunohistochemistry of paraffin-embedded Human thyroid cancer tissue using TA350473 (STX18 Antibody) at dilution 1/25, treated with fusion protein. (Original magnification: x200)