

Product datasheet for **TA350470**

Syntaxin 8 (STX8) Rabbit Polyclonal Antibody

Product data:

Product Type:	Primary Antibodies
Applications:	IHC, WB
Recommended Dilution:	WB: 500-2000 WB positive control: Hela cells IHC: 30-150 Positive control: Human liver cancer Predicted cell location: Cytoplasm
Reactivity:	Human, Mouse, Rat
Host:	Rabbit
Isotype:	IgG
Clonality:	Polyclonal
Immunogen:	Fusion protein of human STX8
Formulation:	pH7.4 PBS, 0.05% NaN ₃ , 40% Glycerol
Concentration:	lot specific
Purification:	Antigen affinity purification
Conjugation:	Unconjugated
Storage:	Store at -20°C as received.
Stability:	Stable for 12 months from date of receipt.
Predicted Protein Size:	27 kDa
Gene Name:	syntaxin 8
Database Link:	NP_004844 Entrez Gene 55943 Mouse Entrez Gene 59074 Rat Entrez Gene 9482 Human Q9UNK0
Background:	The gene is a member of the syntaxin family. The encoded protein is involved in protein trafficking from early to late endosomes via vesicle fusion and exocytosis. A related pseudogene has been identified on chromosome 12. Alternative splicing results in multiple transcript variants.
Synonyms:	CARB

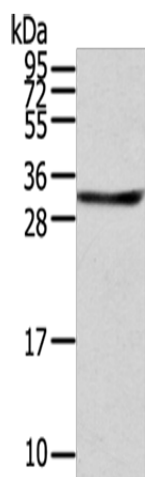


[View online »](#)

Protein Families: Druggable Genome, Transmembrane

Protein Pathways: SNARE interactions in vesicular transport

Product images:



Gel: 12%SDS-PAGE

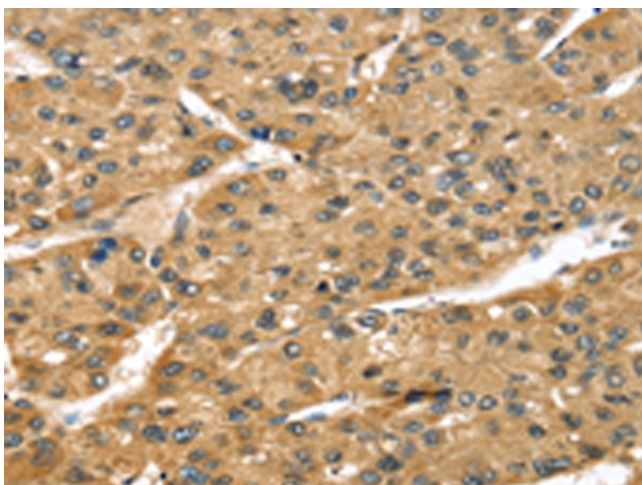
Lysate: 40 µg

Lane: HeLa cells

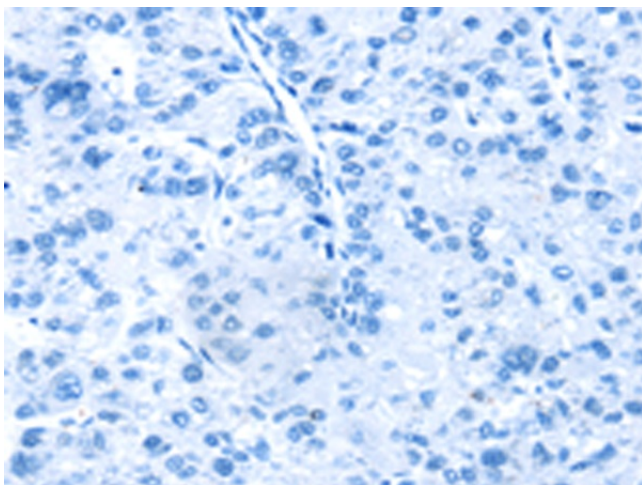
Primary antibody: TA350470 (STX8 Antibody) at dilution 1/800

Secondary antibody: Goat anti rabbit IgG at 1/8000 dilution

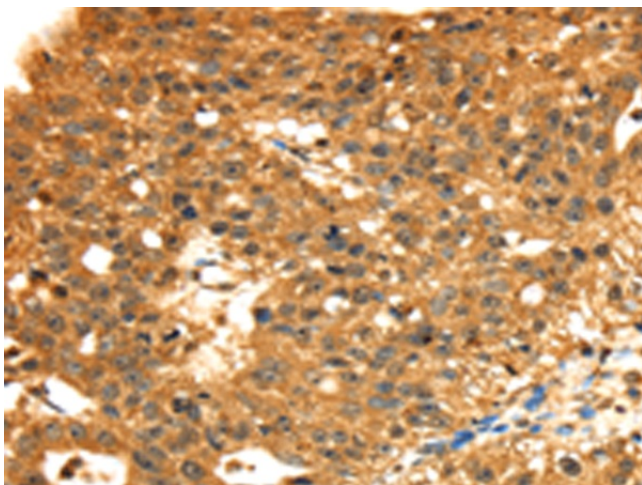
Exposure time: 3 seconds



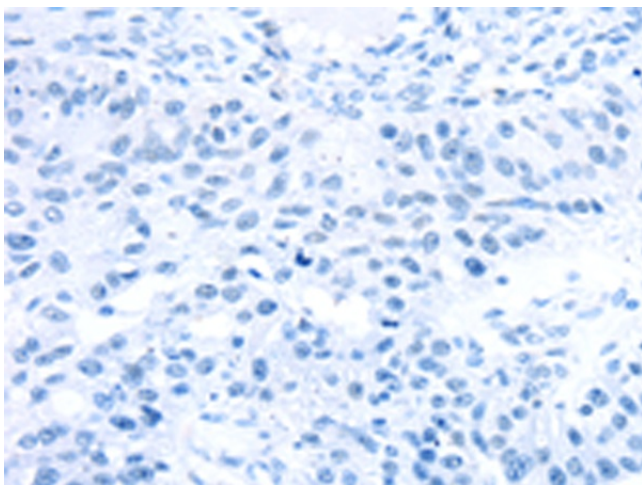
Immunohistochemistry of paraffin-embedded Human liver cancer tissue using TA350470 (STX8 Antibody) at dilution 1/45 (Original magnification: ×200)



Immunohistochemistry of paraffin-embedded Human liver cancer tissue using TA350470 (STX8 Antibody) at dilution 1/45, treated with fusion protein. (Original magnification: x200)



Immunohistochemistry of paraffin-embedded Human breast cancer tissue using TA350470 (STX8 Antibody) at dilution 1/45 (Original magnification: x200)



Immunohistochemistry of paraffin-embedded Human breast cancer tissue using TA350470 (STX8 Antibody) at dilution 1/45, treated with fusion protein. (Original magnification: x200)