

Product datasheet for **TA350469**

Syntaxin 7 (STX7) Rabbit Polyclonal Antibody

Product data:

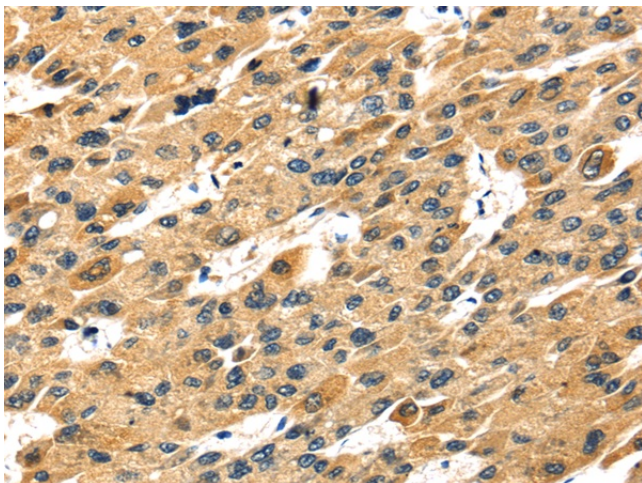
Product Type:	Primary Antibodies
Applications:	IHC
Recommended Dilution:	IHC: 25-100 Positive control: Human liver cancer Predicted cell location: Cytoplasm and Cell membrane
Reactivity:	Human, Mouse, Rat
Host:	Rabbit
Isotype:	IgG
Clonality:	Polyclonal
Immunogen:	Fusion protein of human STX7
Formulation:	pH7.4 PBS, 0.05% NaN ₃ , 40% Glycerol
Concentration:	lot specific
Purification:	Antigen affinity purification
Conjugation:	Unconjugated
Storage:	Store at -20°C as received.
Stability:	Stable for 12 months from date of receipt.
Gene Name:	syntaxin 7
Database Link:	NP_003560 Entrez Gene 53331 Mouse Entrez Gene 60466 Rat Entrez Gene 8417 Human O15400
Background:	Forms a SNARE complex with VTI1B, STX8 and VAMP8 which functions in the homotypic fusion of late endosomes. Component of the SNARE complex composed of STX7, STX8, VAMP7 and VTI1B that is required for heterotypic fusion of late endosomes with lysosomes (By similarity). Interacts with VPS11, VPS16 and VPS18. Interacts with VPS33A. [UniProtKB/Swiss-Prot Function]
Synonyms:	OTTHUMP00000017219; OTTHUMP00000017221; syntaxin 7
Protein Families:	Druggable Genome, Transmembrane



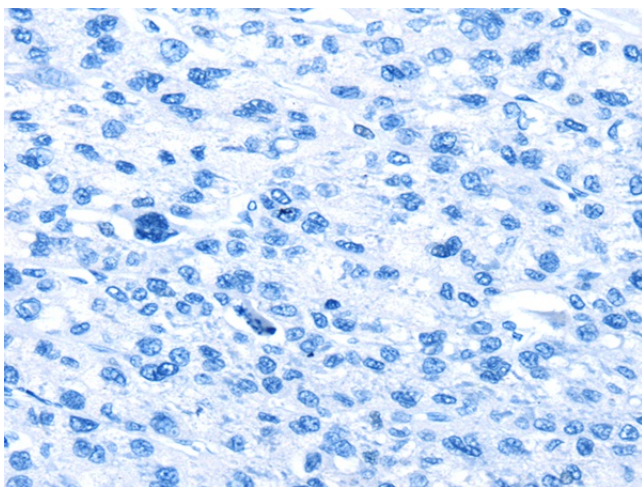
[View online »](#)

Protein Pathways: SNARE interactions in vesicular transport

Product images:



Immunohistochemistry of paraffin-embedded Human liver cancer tissue using TA350469 (STX7 Antibody) at dilution 1/30 (Original magnification: ×200)



Immunohistochemistry of paraffin-embedded Human liver cancer tissue using TA350469 (STX7 Antibody) at dilution 1/30, treated with fusion protein. (Original magnification: ×200)