

Product datasheet for **TA350468**

SYTL5 Rabbit Polyclonal Antibody

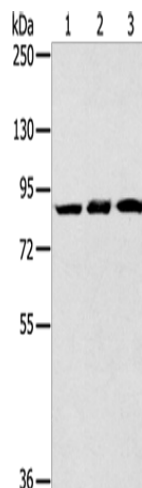
Product data:

Product Type:	Primary Antibodies
Applications:	WB
Recommended Dilution:	WB: 500-2000 WB positive control: Human bladder carcinoma tissue, mouse liver and human fetal liver tissue
Reactivity:	Human, Mouse, Rat
Host:	Rabbit
Isotype:	IgG
Clonality:	Polyclonal
Immunogen:	Fusion protein of human SYTL5
Formulation:	pH7.4 PBS, 0.05% NaN ₃ , 40% Glycerol
Concentration:	lot specific
Purification:	Antigen affinity purification
Conjugation:	Unconjugated
Storage:	Store at -20°C as received.
Stability:	Stable for 12 months from date of receipt.
Predicted Protein Size:	82 kDa
Gene Name:	synaptotagmin like 5
Database Link:	NP_620135 Entrez Gene 236643 MouseEntrez Gene 302538 RatEntrez Gene 94122 Human Q8TDW5
Background:	The protein encoded by this gene belongs to the synaptotagmin-like (Slp) protein family, which contains a unique homology domain at the N-terminus, referred to as the Slp homology domain (SHD). The SHD functions as a binding site for Rab27A, which plays a role in protein transport. Expression of this gene is restricted to placenta and liver, suggesting that it might be involved in Rab27A-dependent membrane trafficking in specific tissues.
Synonyms:	slp5



[View online »](#)

Product images:



Gel: 6%SDS-PAGE

Lysate: 40 μ g

Lane 1-3: Human bladder carcinoma tissue
mouse liver tissue

human fetal liver tissue

Primary antibody: TA350468 (SYTL5 Antibody) at
dilution 1/400

Secondary antibody: Goat anti rabbit IgG at
1/8000 dilution

Exposure time: 15 seconds