

Product datasheet for **TA350465**

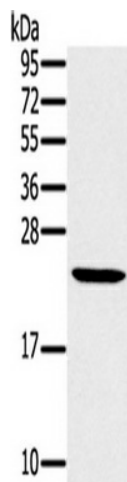
SURF5 (MED22) Rabbit Polyclonal Antibody

Product data:

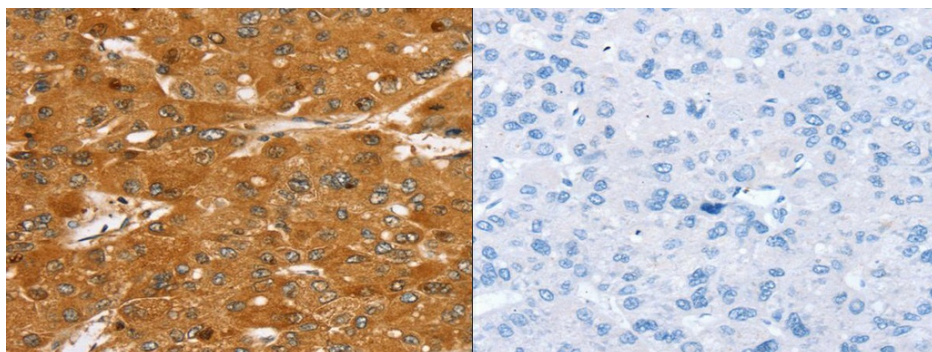
Product Type:	Primary Antibodies
Applications:	IHC, WB
Recommended Dilution:	ELISA: 2000-5000, WB: 500-2000, IHC: 35-150
Reactivity:	Human, Mouse, Rat
Host:	Rabbit
Isotype:	IgG
Clonality:	Polyclonal
Immunogen:	Fusion protein of human MED22
Formulation:	pH7.4 PBS, 0.05% NaN ₃ , 40% Glycerol
Concentration:	lot specific
Purification:	Antigen affinity purification
Conjugation:	Unconjugated
Storage:	Store at -20°C as received.
Stability:	Stable for 12 months from date of receipt.
Predicted Protein Size:	22 kDa
Gene Name:	mediator complex subunit 22
Database Link:	NP_852468 Entrez Gene 20933 Mouse Entrez Gene 499762 Rat Entrez Gene 6837 Human Q15528
Background:	This gene encodes a protein component of the mediator complex, which functions in the regulation of transcription by bridging interactions between gene-specific regulatory factors, RNA polymerase II, and general transcription factors. Alternatively spliced transcript variants encoding different isoforms have been observed.
Synonyms:	MED24; surf-5; SURF5



[View online »](#)

Product images:

Gel: 12%SDS-PAGE, Lysate: 40 ug, Lane: Mouse liver tissue, Primary antibody: (MED22 Antibody) at dilution 1/800, Secondary antibody: Goat anti rabbit IgG at 1/8000 dilution, Exposure time: 15 seconds



The image on the left is immunohistochemistry of paraffin-embedded Human liver cancer tissue using (MED22 Antibody) at dilution 1/40, on the right is treated with fusion protein. (Original magnification: ×200)