

## Product datasheet for **TA350464S**

### SULT2B1 Rabbit Polyclonal Antibody

#### Product data:

Product Type:	Primary Antibodies
Applications:	IHC, WB
Recommended Dilution:	WB: 500-2000 WB positive control: 231 cells IHC: 10-50 Positive control: Human liver cancer Predicted cell location: Cytoplasm
Reactivity:	Human
Host:	Rabbit
Isotype:	IgG
Clonality:	Polyclonal
Immunogen:	Fusion protein of human SULT2B1
Formulation:	pH7.4 PBS, 0.05% NaN <sub>3</sub> , 40% Glycerol
Purification:	Antigen affinity purification
Conjugation:	Unconjugated
Storage:	Store at -20°C as received.
Stability:	Stable for 12 months from date of receipt.
Predicted Protein Size:	41 kDa
Gene Name:	sulfotransferase family 2B member 1
Database Link:	<a href="#">NP_814444</a> <a href="#">Entrez Gene 6820 Human</a> <a href="#">O00204</a>



[View online »](#)

**Background:**

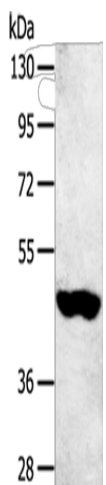
Sulfotransferase enzymes catalyze the sulfate conjugation of many hormones, neurotransmitters, drugs, and xenobiotic compounds. These cytosolic enzymes are different in their tissue distributions and substrate specificities. The gene structure (number and length of exons) is similar among family members. This gene sulfates dehydroepiandrosterone but not 4-nitrophenol, a typical substrate for the phenol and estrogen sulfotransferase subfamilies. Two alternatively spliced variants that encode different isoforms have been described.

**Synonyms:**

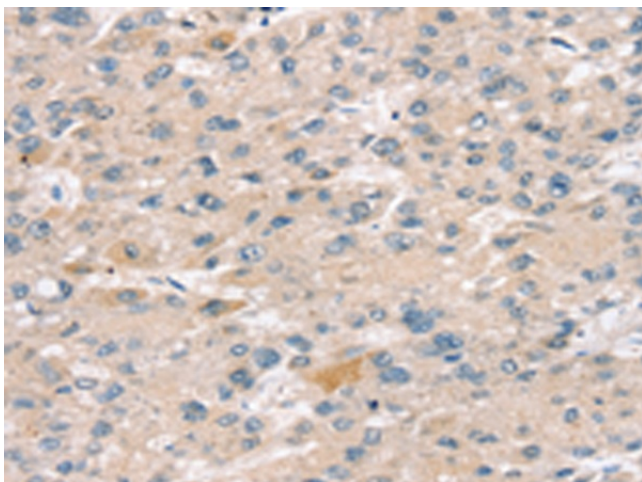
HSST2

**Protein Pathways:**

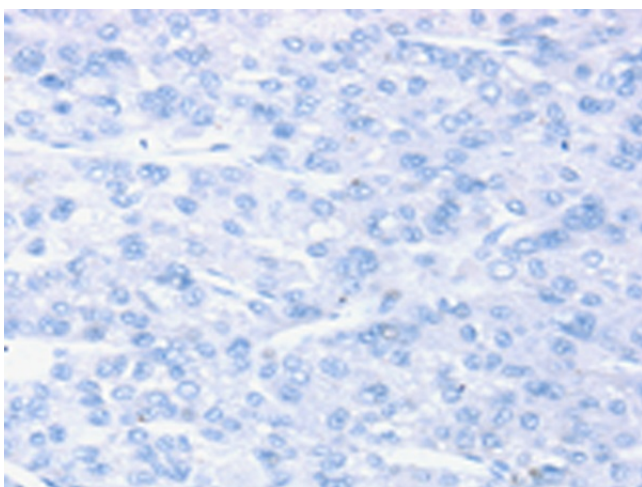
Androgen and estrogen metabolism, Sulfur metabolism

**Product images:**

Gel: 8%SDS-PAGE  
Lysate: 60 µg  
Lane: 231 cells  
Primary antibody: [TA350464] (SULT2B1 Antibody) at dilution 1/800  
Secondary antibody: Goat anti rabbit IgG at 1/8000 dilution  
Exposure time: 5 minutes



Immunohistochemistry of paraffin-embedded Human liver cancer tissue using [TA350464] (SULT2B1 Antibody) at dilution 1/25 (Original magnification: ×200)



Immunohistochemistry of paraffin-embedded Human liver cancer tissue using [TA350464] (SULT2B1 Antibody) at dilution 1/25, treated with fusion protein. (Original magnification: ×200)