

## Product datasheet for **TA350460**

### STK23 (SRPK3) Rabbit Polyclonal Antibody

#### Product data:

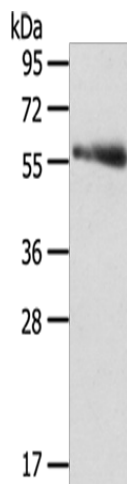
Product Type:	Primary Antibodies
Applications:	IHC, WB
Recommended Dilution:	WB: 200-1000 WB positive control: Human thyroid cancer tissue IHC: 25-100 Positive control: Human thyroid cancer Predicted cell location: Cytoplasm and Cell membrane
Reactivity:	Human, Mouse
Host:	Rabbit
Isotype:	IgG
Clonality:	Polyclonal
Immunogen:	Fusion protein of human SRPK3
Formulation:	pH7.4 PBS, 0.05% NaN <sub>3</sub> , 40% Glycerol
Concentration:	lot specific
Purification:	Antigen affinity purification
Conjugation:	Unconjugated
Storage:	Store at -20°C as received.
Stability:	Stable for 12 months from date of receipt.
Predicted Protein Size:	62 kDa
Gene Name:	SRSF protein kinase 3
Database Link:	<a href="#">NP_055185</a> <a href="#">Entrez Gene 56504 Mouse</a> <a href="#">Entrez Gene 26576 Human</a> <a href="#">Q9UPE1</a>
Background:	This gene encodes a protein kinase similar to a protein kinase which is specific for the SR (serine/arginine-rich domain) family of splicing factors. A highly similar protein has been shown to play a role in muscle development in mice. Multiple transcript variants encoding different isoforms have been found for this gene.
Synonyms:	MSSK-1; MSSK1; STK23



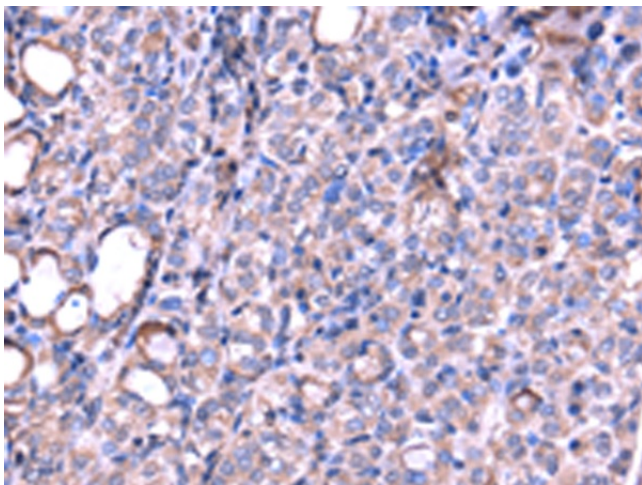
[View online »](#)

Protein Families: Druggable Genome, Protein Kinase

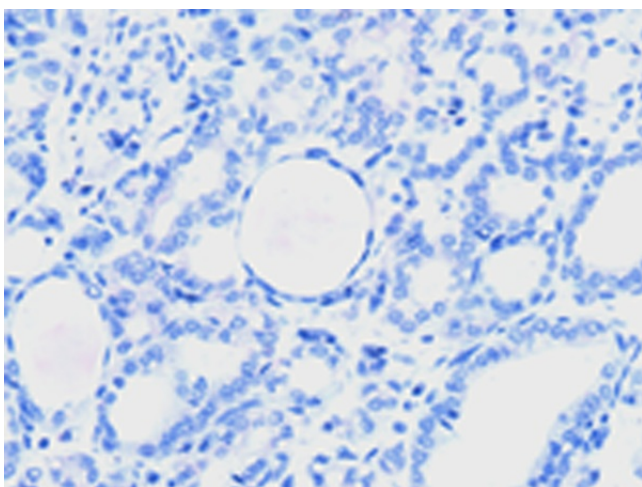
### Product images:



Gel: 8%SDS-PAGE  
Lysate: 40  $\mu$ g  
Lane: Human thyroid cancer tissue  
Primary antibody: TA350460 (SRPK3 Antibody) at dilution 1/300  
Secondary antibody: Goat anti rabbit IgG at 1/8000 dilution  
Exposure time: 3 minutes



Immunohistochemistry of paraffin-embedded Human thyroid cancer tissue using TA350460 (SRPK3 Antibody) at dilution 1/20 (Original magnification:  $\times$ 200)



Immunohistochemistry of paraffin-embedded Human thyroid cancer tissue using TA350460 (SRPK3 Antibody) at dilution 1/20, treated with fusion protein. (Original magnification: ×200)