

Product datasheet for **TA350449S**

SSBP1 Rabbit Polyclonal Antibody

Product data:

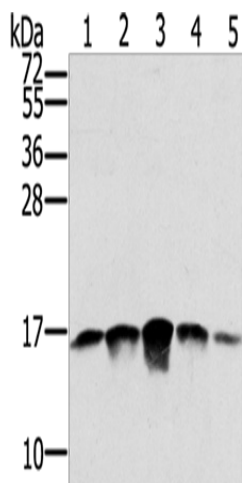
Product Type:	Primary Antibodies
Applications:	IHC, WB
Recommended Dilution:	WB: 500-2000 WB positive control: PC3, A549, K562, A375 and hela cells IHC: 25-100 Positive control: Human liver cancer Predicted cell location: Cytoplasm
Reactivity:	Human, Mouse, Rat
Host:	Rabbit
Isotype:	IgG
Clonality:	Polyclonal
Immunogen:	Fusion protein of human SSBP1
Formulation:	pH7.4 PBS, 0.05% NaN ₃ , 40% Glycerol
Purification:	Antigen affinity purification
Conjugation:	Unconjugated
Storage:	Store at -20°C as received.
Stability:	Stable for 12 months from date of receipt.
Predicted Protein Size:	17 kDa
Gene Name:	single stranded DNA binding protein 1
Database Link:	NP_003134 Entrez Gene 54304 Rat Entrez Gene 381760 Mouse Entrez Gene 6742 Human Q04837
Background:	SSBP1 is a housekeeping gene involved in mitochondrial biogenesis (Tiranti et al., 1995 [PubMed 7789991]). It is also a subunit of a single-stranded DNA (ssDNA)-binding complex involved in the maintenance of genome stability.
Synonyms:	Mt-SSB; mtSSB; SOSS-B1; SSBP
Protein Families:	Druggable Genome



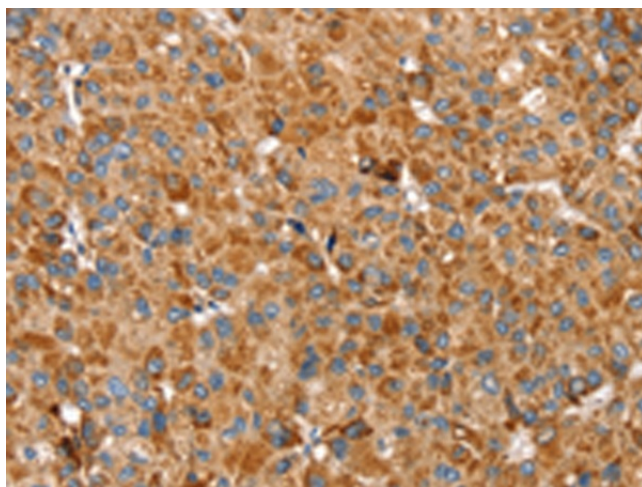
[View online »](#)

Protein Pathways: DNA replication, Homologous recombination, Mismatch repair

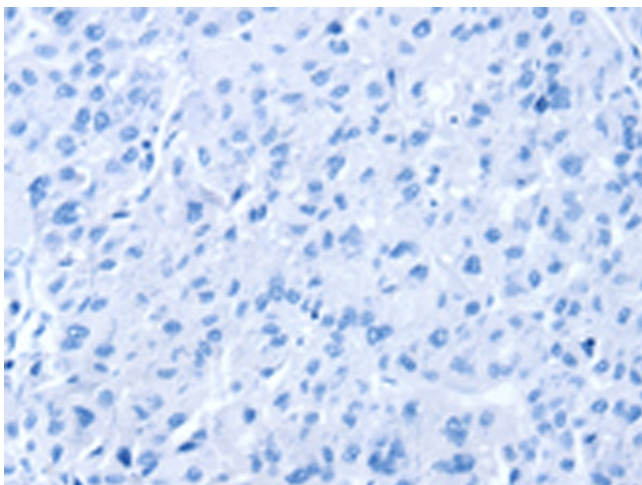
Product images:



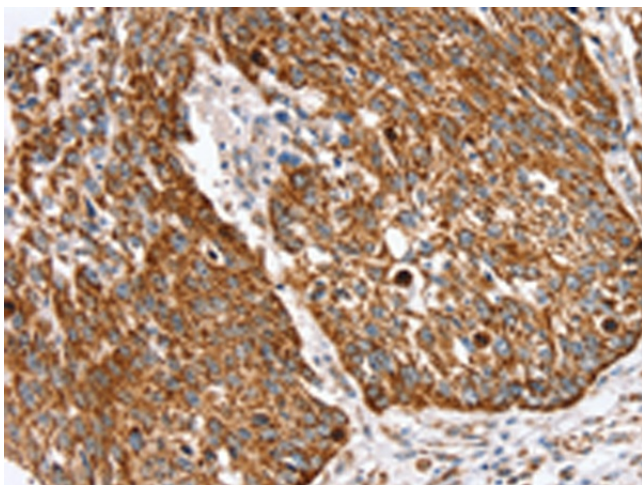
Gel: 12%SDS-PAGE
Lysate: 40 μ g
Lane 1-5: PC3 cells
A549 cells
K562 cells
A375 cells
hela cells
Primary antibody: [TA350449] (SSBP1 Antibody)
at dilution 1/400
Secondary antibody: Goat anti rabbit IgG at
1/8000 dilution
Exposure time: 1 minute



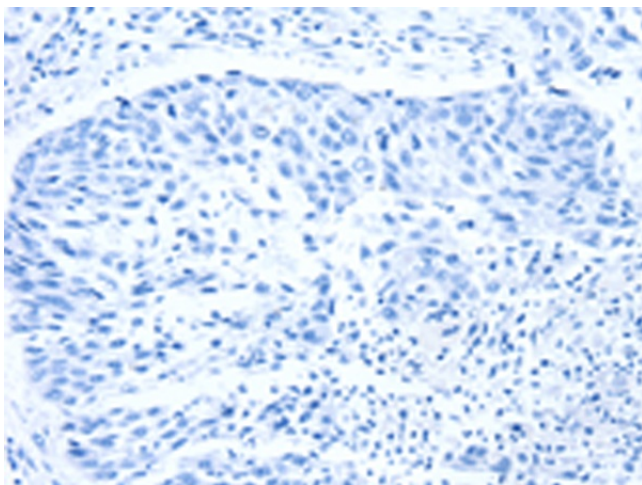
Immunohistochemistry of paraffin-embedded
Human liver cancer tissue using [TA350449]
(SSBP1 Antibody) at dilution 1/30 (Original
magnification: \times 200)



Immunohistochemistry of paraffin-embedded Human liver cancer tissue using [TA350449] (SSBP1 Antibody) at dilution 1/30, treated with fusion protein. (Original magnification: $\times 200$)



Immunohistochemistry of paraffin-embedded Human lung cancer tissue using [TA350449] (SSBP1 Antibody) at dilution 1/30 (Original magnification: $\times 200$)



Immunohistochemistry of paraffin-embedded Human lung cancer tissue using [TA350449] (SSBP1 Antibody) at dilution 1/30, treated with fusion protein. (Original magnification: $\times 200$)