

Product datasheet for **TA350449**

SSBP1 Rabbit Polyclonal Antibody

Product data:

Product Type:	Primary Antibodies
Applications:	IHC, WB
Recommended Dilution:	WB: 500-2000 WB positive control: PC3, A549, K562, A375 and hela cells IHC: 25-100 Positive control: Human liver cancer Predicted cell location: Cytoplasm
Reactivity:	Human, Mouse, Rat
Host:	Rabbit
Isotype:	IgG
Clonality:	Polyclonal
Immunogen:	Fusion protein of human SSBP1
Formulation:	pH7.4 PBS, 0.05% NaN ₃ , 40% Glycerol
Concentration:	lot specific
Purification:	Antigen affinity purification
Conjugation:	Unconjugated
Storage:	Store at -20°C as received.
Stability:	Stable for 12 months from date of receipt.
Predicted Protein Size:	17 kDa
Gene Name:	single stranded DNA binding protein 1
Database Link:	NP_003134 Entrez Gene 54304 Rat Entrez Gene 381760 Mouse Entrez Gene 6742 Human Q04837
Background:	SSBP1 is a housekeeping gene involved in mitochondrial biogenesis (Tiranti et al., 1995 [PubMed 7789991]). It is also a subunit of a single-stranded DNA (ssDNA)-binding complex involved in the maintenance of genome stability.
Synonyms:	Mt-SSB; mtSSB; SOSS-B1; SSBP

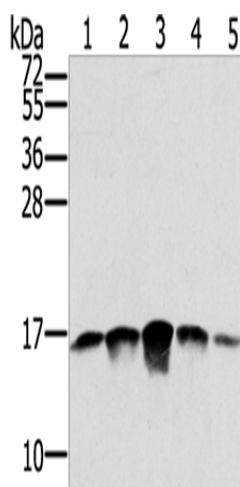


[View online »](#)

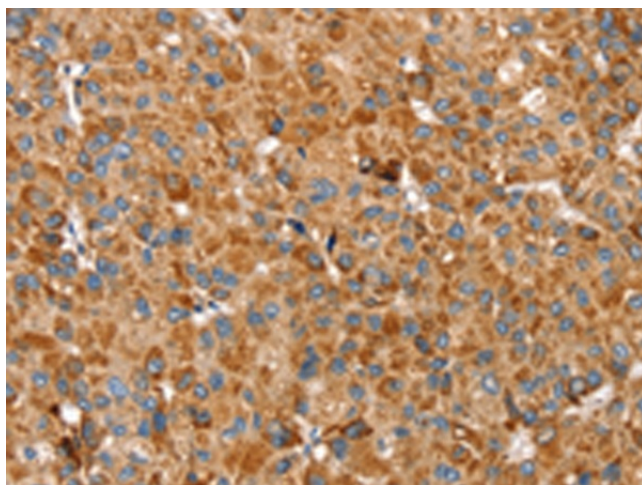
Protein Families: Druggable Genome

Protein Pathways: DNA replication, Homologous recombination, Mismatch repair

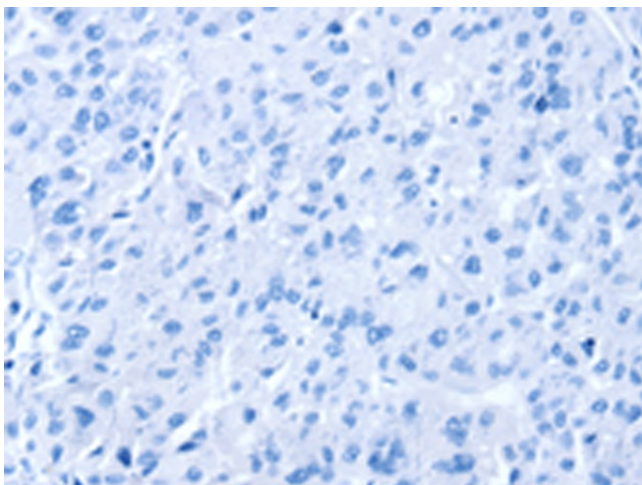
Product images:



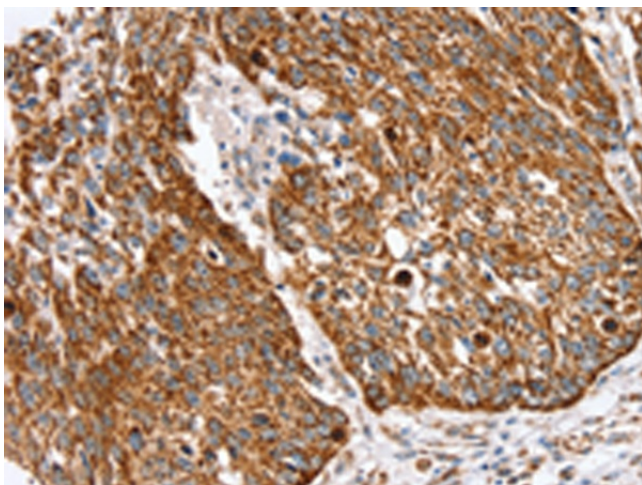
Gel: 12%SDS-PAGE
 Lysate: 40 µg
 Lane 1-5: PC3 cells
 A549 cells
 K562 cells
 A375 cells
 hela cells
 Primary antibody: TA350449 (SSBP1 Antibody) at dilution 1/400
 Secondary antibody: Goat anti rabbit IgG at 1/8000 dilution
 Exposure time: 1 minute



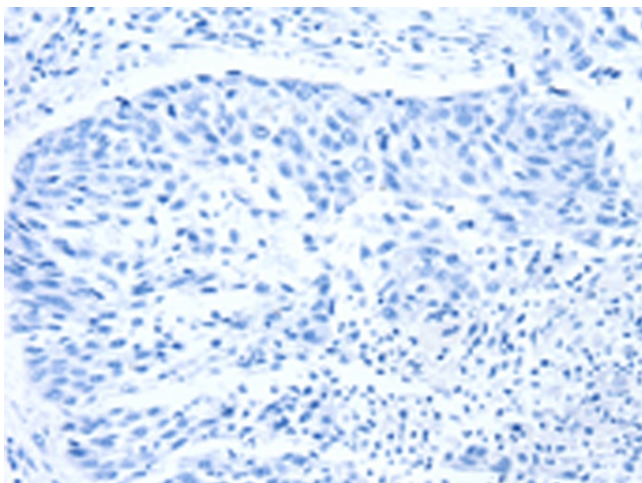
Immunohistochemistry of paraffin-embedded Human liver cancer tissue using TA350449 (SSBP1 Antibody) at dilution 1/30 (Original magnification: ×200)



Immunohistochemistry of paraffin-embedded Human liver cancer tissue using TA350449 (SSBP1 Antibody) at dilution 1/30, treated with fusion protein. (Original magnification: $\times 200$)



Immunohistochemistry of paraffin-embedded Human lung cancer tissue using TA350449 (SSBP1 Antibody) at dilution 1/30 (Original magnification: $\times 200$)



Immunohistochemistry of paraffin-embedded Human lung cancer tissue using TA350449 (SSBP1 Antibody) at dilution 1/30, treated with fusion protein. (Original magnification: $\times 200$)