

Product datasheet for **TA350447**

TRIM21 Rabbit Polyclonal Antibody

Product data:

Product Type:	Primary Antibodies
Applications:	WB
Recommended Dilution:	WB: 1000-5000 WB positive control: Lovo, A549 and hela cells
Reactivity:	Human
Host:	Rabbit
Isotype:	IgG
Clonality:	Polyclonal
Immunogen:	Fusion protein of human TRIM21
Formulation:	pH7.4 PBS, 0.05% NaN ₃ , 40% Glycerol
Concentration:	lot specific
Purification:	Antigen affinity purification
Conjugation:	Unconjugated
Storage:	Store at -20°C as received.
Stability:	Stable for 12 months from date of receipt.
Predicted Protein Size:	54 kDa
Gene Name:	tripartite motif containing 21
Database Link:	NP_003132 Entrez Gene 6737 Human P19474

Background: This gene encodes a member of the tripartite motif (TRIM) family. The TRIM motif includes three zinc-binding domains, a RING, a B-box type 1 and a B-box type 2, and a coiled-coil region. The encoded protein is part of the RoSSA ribonucleoprotein, which includes a single polypeptide and one of four small RNA molecules. The RoSSA particle localizes to both the cytoplasm and the nucleus. RoSSA interacts with autoantigens in patients with Sjogren syndrome and systemic lupus erythematosus.

Synonyms: RNF81; Ro; RO52; SSA; SSA1

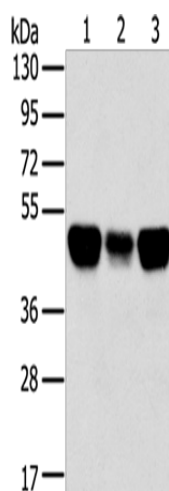


[View online »](#)

Protein Families: Druggable Genome

Protein Pathways: Systemic lupus erythematosus

Product images:



Gel: 8%SDS-PAGE

Lysate: 40 μ g

Lane 1-3: Lovo cells

A549 cells

hela cells

Primary antibody: TA350447 (TRIM21 Antibody)
at dilution 1/400

Secondary antibody: Goat anti rabbit IgG at
1/8000 dilution

Exposure time: 10 seconds