

## Product datasheet for **TA350446**

### TRIM21 Rabbit Polyclonal Antibody

#### Product data:

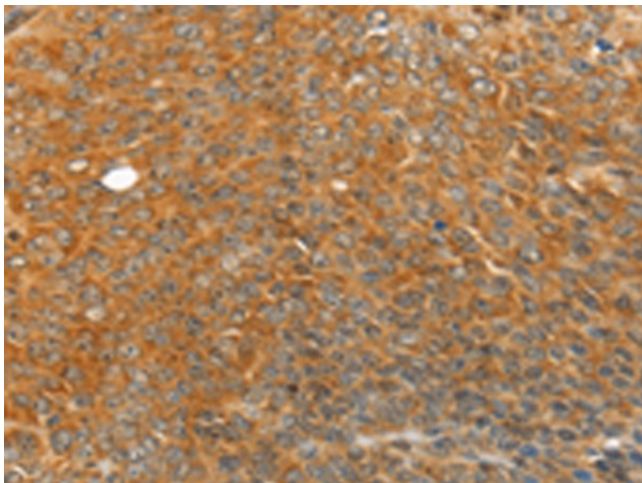
Product Type:	Primary Antibodies
Applications:	IHC
Recommended Dilution:	IHC: 25-100 Positive control: Human ovarian cancer Predicted cell location: Cytoplasm and Cell membrane
Reactivity:	Human
Host:	Rabbit
Isotype:	IgG
Clonality:	Polyclonal
Immunogen:	Fusion protein of human TRIM21
Formulation:	pH7.4 PBS, 0.05% NaN <sub>3</sub> , 40% Glycerol
Concentration:	lot specific
Purification:	Antigen affinity purification
Conjugation:	Unconjugated
Storage:	Store at -20°C as received.
Stability:	Stable for 12 months from date of receipt.
Gene Name:	tripartite motif containing 21
Database Link:	<a href="#">NP_003132</a> <a href="#">Entrez Gene 6737 Human</a> <a href="#">P19474</a>
Background:	This gene encodes a member of the tripartite motif (TRIM) family. The TRIM motif includes three zinc-binding domains, a RING, a B-box type 1 and a B-box type 2, and a coiled-coil region. The encoded protein is part of the RoSSA ribonucleoprotein, which includes a single polypeptide and one of four small RNA molecules. The RoSSA particle localizes to both the cytoplasm and the nucleus. RoSSA interacts with autoantigens in patients with Sjogren syndrome and systemic lupus erythematosus.
Synonyms:	RNF81; Ro; RO52; SSA; SSA1
Protein Families:	Druggable Genome



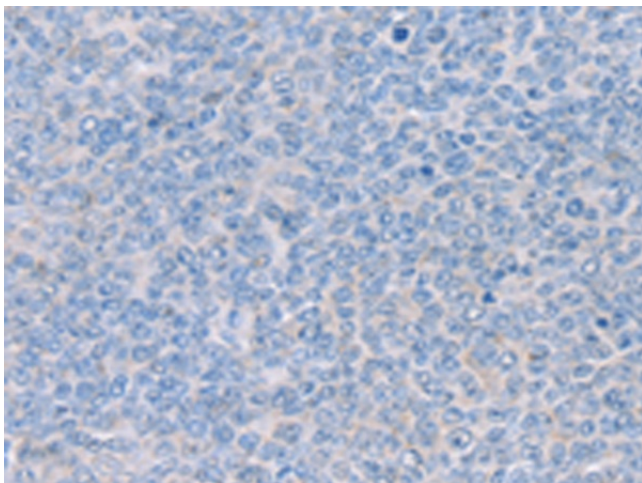
[View online »](#)

Protein Pathways: Systemic lupus erythematosus

### Product images:



Immunohistochemistry of paraffin-embedded Human ovarian cancer tissue using TA350446 (TRIM21 Antibody) at dilution 1/20 (Original magnification:  $\times 200$ )



Immunohistochemistry of paraffin-embedded Human ovarian cancer tissue using TA350446 (TRIM21 Antibody) at dilution 1/20, treated with fusion protein. (Original magnification:  $\times 200$ )