

## Product datasheet for TA350435S

### SnoN (SKIL) Rabbit Polyclonal Antibody

#### Product data:

Product Type:	Primary Antibodies
Applications:	IHC, WB
Recommended Dilution:	WB: 200-1000 WB positive control: Huvec cells IHC: 30-150 Positive control: Human liver cancer Predicted cell location: Cytoplasm
Reactivity:	Human, Mouse
Host:	Rabbit
Isotype:	IgG
Clonality:	Polyclonal
Immunogen:	Fusion protein of human SKIL
Formulation:	pH7.4 PBS, 0.05% NaN <sub>3</sub> , 40% Glycerol
Purification:	Antigen affinity purification
Conjugation:	Unconjugated
Storage:	Store at -20°C as received.
Stability:	Stable for 12 months from date of receipt.
Predicted Protein Size:	77 kDa
Gene Name:	SKI-like proto-oncogene
Database Link:	<a href="#">NP_005405</a> <a href="#">Entrez Gene 20482 Mouse</a> <a href="#">Entrez Gene 6498 Human</a> <a href="#">P12757</a>

**Background:** The protein encoded by this gene is a component of the SMAD pathway, which regulates cell growth and differentiation through transforming growth factor-beta (TGFB). In the absence of ligand, the encoded protein binds to the promoter region of TGFB-responsive genes and recruits a nuclear repressor complex. TGFB signaling causes SMAD3 to enter the nucleus and degrade this protein, allowing these genes to be activated. Four transcript variants encoding three different isoforms have been found for this gene.

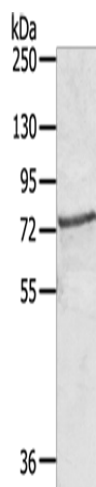


[View online »](#)

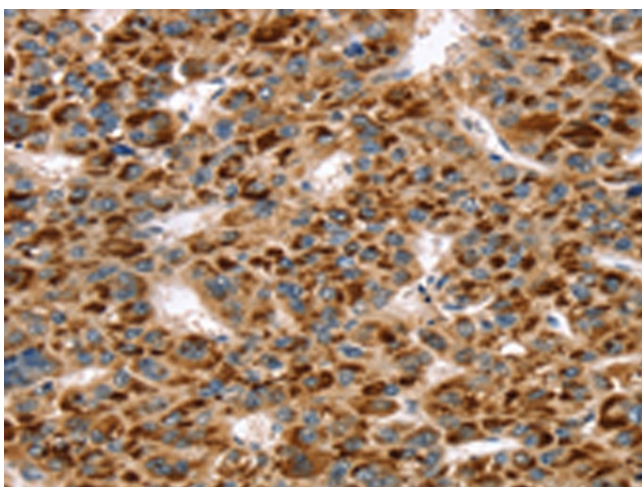
**Synonyms:** SNO; SnoA; Snol; SnoN

**Protein Families:** Druggable Genome, Transcription Factors

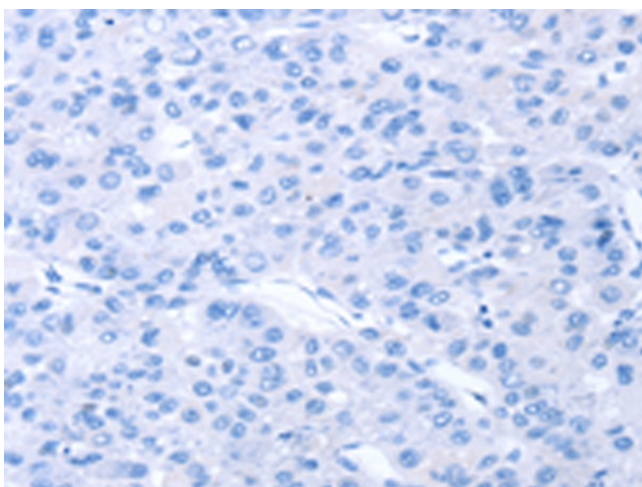
**Product images:**



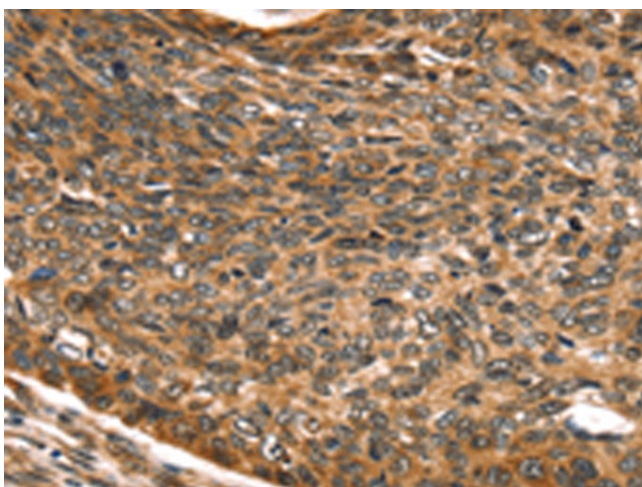
Gel: 6%SDS-PAGE  
Lysate: 40  $\mu$ g  
Lane: Huvec cells  
Primary antibody: [TA350435] (SKIL Antibody) at dilution 1/450  
Secondary antibody: Goat anti rabbit IgG at 1/8000 dilution  
Exposure time: 20 seconds



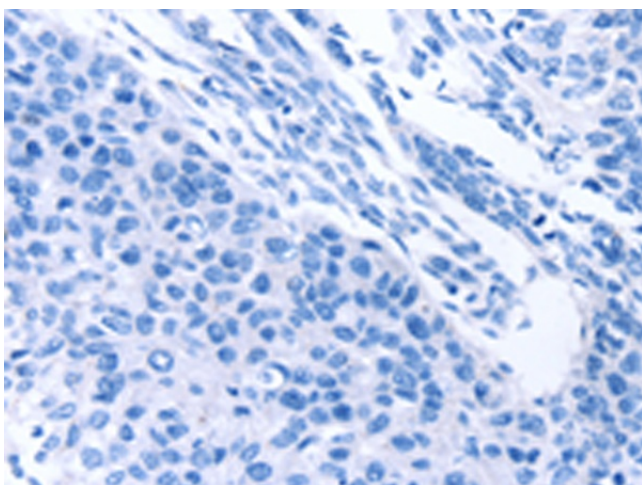
Immunohistochemistry of paraffin-embedded Human liver cancer tissue using [TA350435] (SKIL Antibody) at dilution 1/30 (Original magnification:  $\times$ 200)



Immunohistochemistry of paraffin-embedded Human liver cancer tissue using [TA350435] (SKIL Antibody) at dilution 1/30, treated with fusion protein. (Original magnification: x200)



Immunohistochemistry of paraffin-embedded Human esophagus cancer tissue using [TA350435] (SKIL Antibody) at dilution 1/30 (Original magnification: x200)



Immunohistochemistry of paraffin-embedded Human esophagus cancer tissue using [TA350435] (SKIL Antibody) at dilution 1/30, treated with fusion protein. (Original magnification: x200)