

Product datasheet for **TA350434**

SNF5 (SMARCB1) Rabbit Polyclonal Antibody

Product data:

Product Type:	Primary Antibodies
Applications:	IHC, WB
Recommended Dilution:	WB: 200-1000 WB positive control: Jurkat, K562 and hepg2 cells IHC: 30-150 Positive control: Human liver cancer Predicted cell location: Nucleus
Reactivity:	Human, Mouse
Host:	Rabbit
Isotype:	IgG
Clonality:	Polyclonal
Immunogen:	Fusion protein of human SMARCB1
Formulation:	pH7.4 PBS, 0.05% NaN ₃ , 40% Glycerol
Concentration:	lot specific
Purification:	Antigen affinity purification
Conjugation:	Unconjugated
Storage:	Store at -20°C as received.
Stability:	Stable for 12 months from date of receipt.
Predicted Protein Size:	44 kDa
Gene Name:	SWI/SNF related, matrix associated, actin dependent regulator of chromatin, subfamily b, member 1
Database Link:	NP_003064 Entrez Gene 20587 Mouse Entrez Gene 6598 Human Q12824



[View online »](#)

Background:

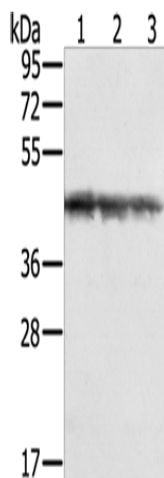
The protein encoded by this gene is part of a complex that relieves repressive chromatin structures, allowing the transcriptional machinery to access its targets more effectively. The encoded nuclear protein may also bind to and enhance the DNA joining activity of HIV-1 integrase. This gene has been found to be a tumor suppressor, and mutations in it have been associated with malignant rhabdoid tumors. Two transcript variants encoding different isoforms have been found for this gene.

Synonyms:

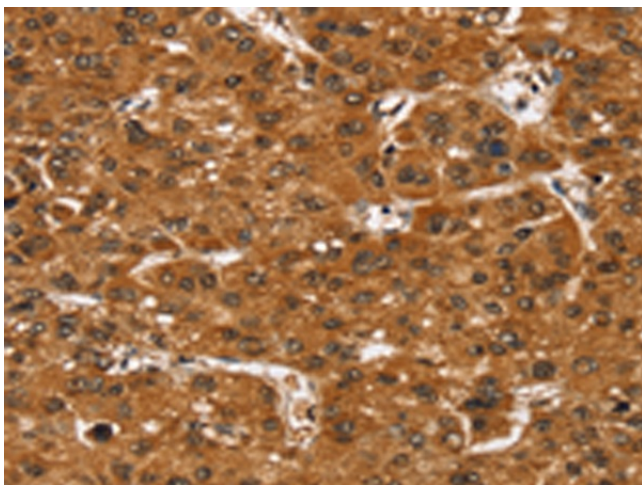
BAF47; CSS3; hSNFS; INI1; MRD15; PPP1R144; RDT; RTPS1; Sfh1p; SNF5; SNF5L1; Snr1; SWNTS1

Protein Families:

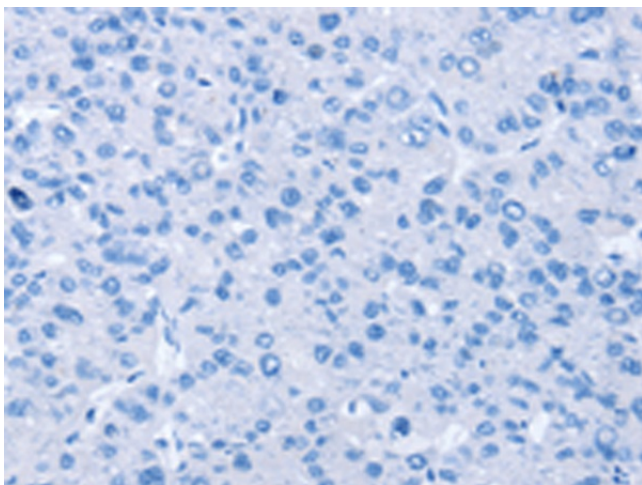
Transcription Factors

Product images:

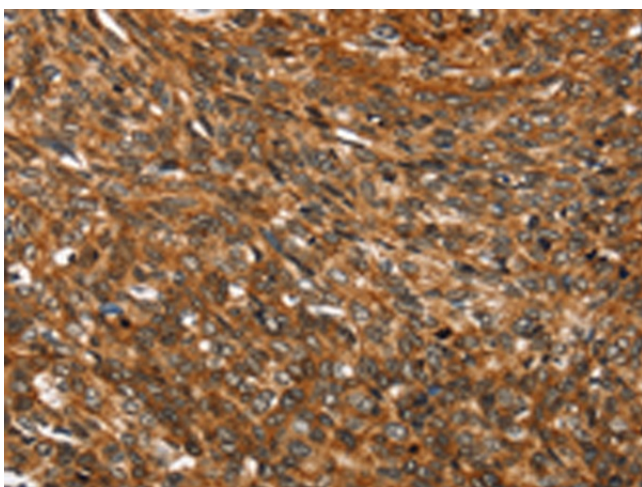
Gel: 8%SDS-PAGE
Lysate: 40 µg
Lane 1-3: Jurkat cells
K562 cells
hepg2 cells
Primary antibody: TA350434 (SMARCB1 Antibody)
at dilution 1/450
Secondary antibody: Goat anti rabbit IgG at
1/8000 dilution
Exposure time: 10 seconds



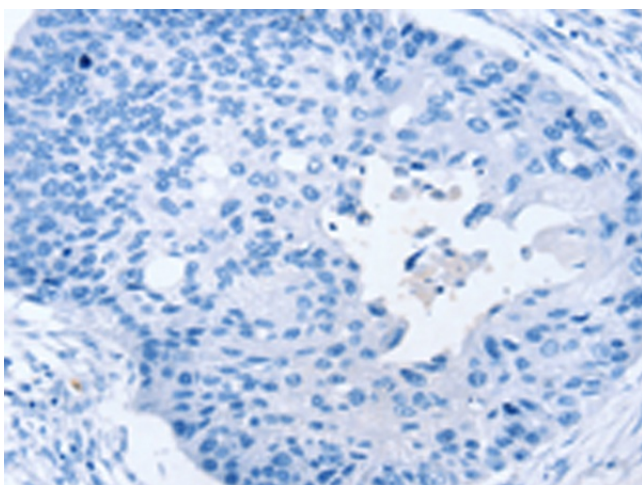
Immunohistochemistry of paraffin-embedded
Human liver cancer tissue using TA350434
(SMARCB1 Antibody) at dilution 1/35 (Original
magnification: ×200)



Immunohistochemistry of paraffin-embedded Human liver cancer tissue using TA350434 (SMARCB1 Antibody) at dilution 1/35, treated with fusion protein. (Original magnification: ×200)



Immunohistochemistry of paraffin-embedded Human esophagus cancer tissue using TA350434 (SMARCB1 Antibody) at dilution 1/35 (Original magnification: ×200)



Immunohistochemistry of paraffin-embedded Human esophagus cancer tissue using TA350434 (SMARCB1 Antibody) at dilution 1/35, treated with fusion protein. (Original magnification: ×200)