

Product datasheet for **TA350433**

SNF2H (SMARCA5) Rabbit Polyclonal Antibody

Product data:

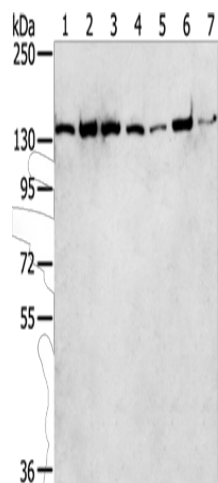
Product Type:	Primary Antibodies
Applications:	WB
Recommended Dilution:	WB: 500-2000 WB positive control: Hepg2, MCF7, Jurkat, hela, A431, K562 and Incap cells
Reactivity:	Human, Mouse
Host:	Rabbit
Isotype:	IgG
Clonality:	Polyclonal
Immunogen:	Fusion protein of human SMARCA5
Formulation:	pH7.4 PBS, 0.05% NaN ₃ , 40% Glycerol
Concentration:	lot specific
Purification:	Antigen affinity purification
Conjugation:	Unconjugated
Storage:	Store at -20°C as received.
Stability:	Stable for 12 months from date of receipt.
Predicted Protein Size:	122 kDa
Gene Name:	SWI/SNF related, matrix associated, actin dependent regulator of chromatin, subfamily a, member 5
Database Link:	NP_003592 Entrez Gene 93762 Mouse Entrez Gene 8467 Human O60264
Background:	The protein encoded by this gene is a member of the SWI/SNF family of proteins. Members of this family have helicase and ATPase activities and are thought to regulate transcription of certain genes by altering the chromatin structure around those genes. The protein encoded by this gene is a component of the chromatin remodeling and spacing factor RSF, a facilitator of the transcription of class II genes by RNA polymerase II.
Synonyms:	hISWI; hSNF2H; ISWI; SNF2H; WCRF135



[View online »](#)

Protein Families: Transcription Factors

Product images:



Gel: 6%SDS-PAGE

Lysate: 40 μ g

Lane 1-7: Hepg2 cells

MCF7 cells

Jurkat cells

hela cells

A431 cells

K562 cells

Incap cells

Primary antibody: TA350433 (SMARCA5 Antibody)

at dilution 1/250

Secondary antibody: Goat anti rabbit IgG at

1/8000 dilution

Exposure time: 20 seconds