

Product datasheet for **TA350432**

SNAP29 Rabbit Polyclonal Antibody

Product data:

Product Type:	Primary Antibodies
Applications:	IHC
Recommended Dilution:	IHC: 30-150 Positive control: Human liver cancer Predicted cell location: Cytoplasm
Reactivity:	Human, Mouse, Rat
Host:	Rabbit
Isotype:	IgG
Clonality:	Polyclonal
Immunogen:	Fusion protein of human SNAP29
Formulation:	pH7.4 PBS, 0.05% NaN ₃ , 40% Glycerol
Concentration:	lot specific
Purification:	Antigen affinity purification
Conjugation:	Unconjugated
Storage:	Store at -20°C as received.
Stability:	Stable for 12 months from date of receipt.
Gene Name:	synaptosome associated protein 29kDa
Database Link:	NP_004773 Entrez Gene 67474 Mouse Entrez Gene 116500 Rat Entrez Gene 9342 Human O95721

Background: This gene, a member of the SNAP25 gene family, encodes a protein involved in multiple membrane trafficking steps. Two other members of this gene family, SNAP23 and SNAP25, encode proteins that bind a syntaxin protein and mediate synaptic vesicle membrane docking and fusion to the plasma membrane. The protein encoded by this gene binds tightly to multiple syntaxins and is localized to intracellular membrane structures rather than to the plasma membrane. While the protein is mostly membrane-bound, a significant fraction of it is found free in the cytoplasm. Use of multiple polyadenylation sites has been noted for this gene.



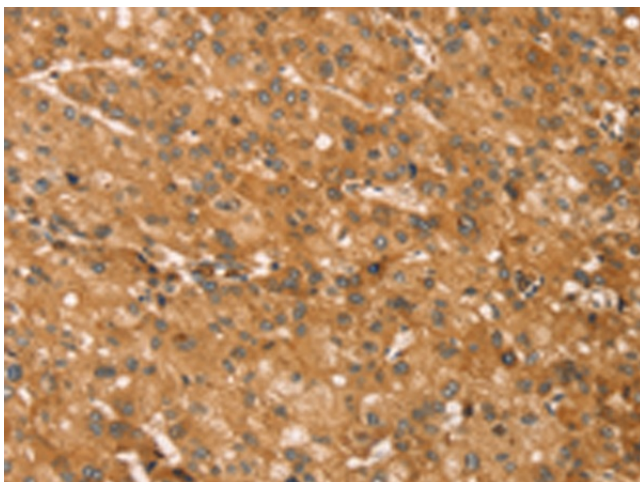
[View online »](#)

Synonyms: CEDNIK; SNAP-29

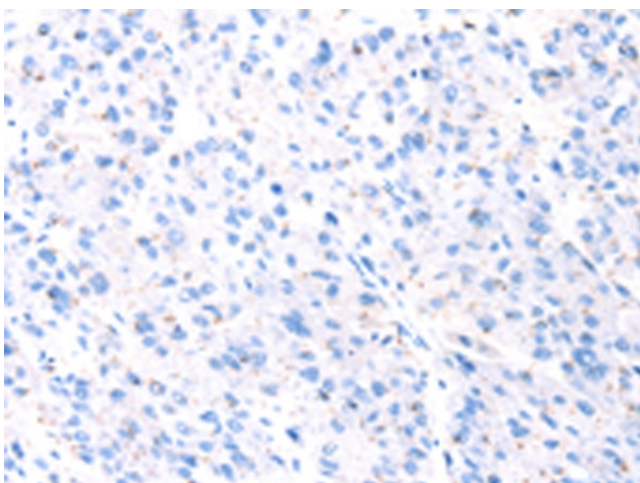
Protein Families: Druggable Genome

Protein Pathways: SNARE interactions in vesicular transport

Product images:



Immunohistochemistry of paraffin-embedded Human liver cancer tissue using TA350432 (SNAP29 Antibody) at dilution 1/45 (Original magnification: $\times 200$)



Immunohistochemistry of paraffin-embedded Human liver cancer tissue using TA350432 (SNAP29 Antibody) at dilution 1/45, treated with fusion protein. (Original magnification: $\times 200$)