

Product datasheet for **TA350431**

SNAP23 Rabbit Polyclonal Antibody

Product data:

| | |
|-------------------------|--|
| Product Type: | Primary Antibodies |
| Applications: | IHC, WB |
| Recommended Dilution: | WB: 500-2000 WB positive control: Human placenta tissue and hela cells, hepg2 cells and human fetal liver tissue, A549 cells and human normal kidney tissue IHC: 25-100 Positive control: Human prostate cancer Predicted cell location: Cytoplasm and Cell membrane |
| Reactivity: | Human, Mouse, Rat |
| Host: | Rabbit |
| Isotype: | IgG |
| Clonality: | Polyclonal |
| Immunogen: | Fusion protein of human SNAP23 |
| Formulation: | pH7.4 PBS, 0.05% NaN ₃ , 40% Glycerol |
| Concentration: | lot specific |
| Purification: | Antigen affinity purification |
| Conjugation: | Unconjugated |
| Storage: | Store at -20°C as received. |
| Stability: | Stable for 12 months from date of receipt. |
| Predicted Protein Size: | 23 kDa |
| Gene Name: | synaptosome associated protein 23kDa |
| Database Link: | NP_003816 Entrez Gene 20619 Mouse Entrez Gene 64630 Rat Entrez Gene 8773 Human O00161 |



[View online »](#)

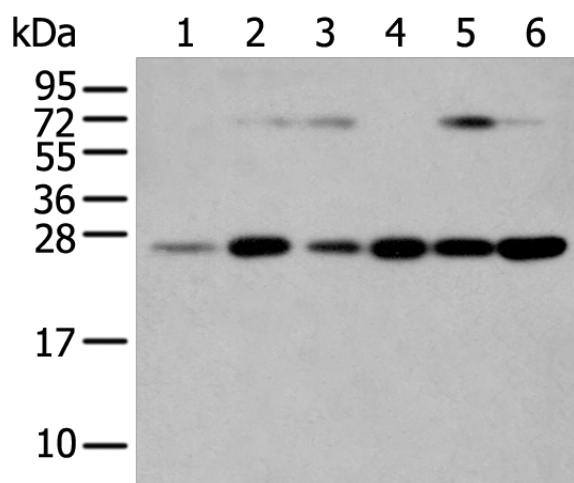
Background: Specificity of vesicular transport is regulated, in part, by the interaction of a vesicle-associated membrane protein termed synaptobrevin/VAMP with a target compartment membrane protein termed syntaxin. These proteins, together with SNAP25 (synaptosome-associated protein of 25 kDa), form a complex which serves as a binding site for the general membrane fusion machinery.

Synonyms: HsT17016; SNAP-23; SNAP23A; SNAP23B

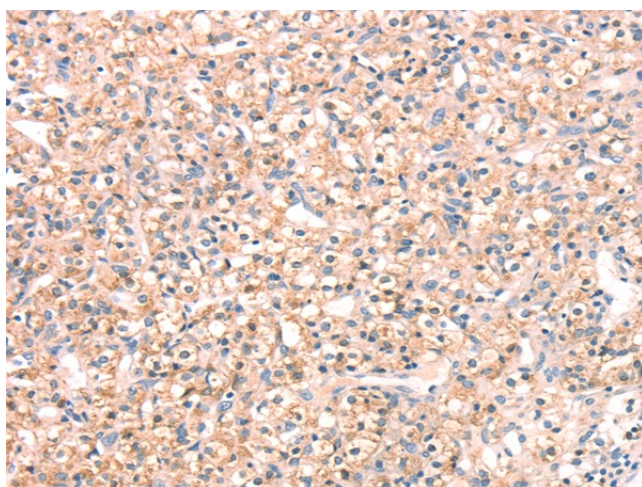
Protein Families: Druggable Genome

Protein Pathways: SNARE interactions in vesicular transport

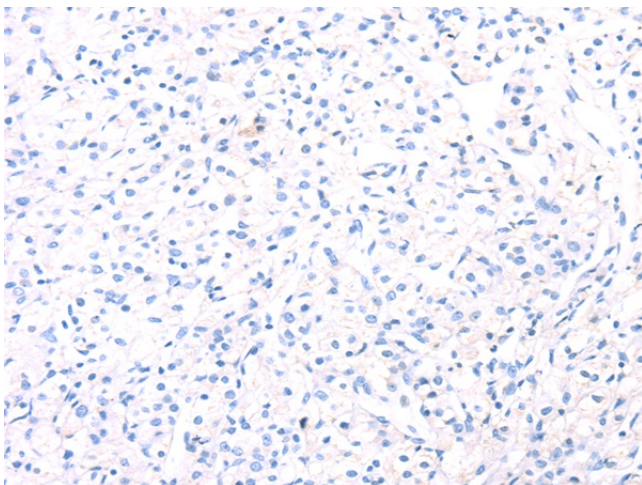
Product images:



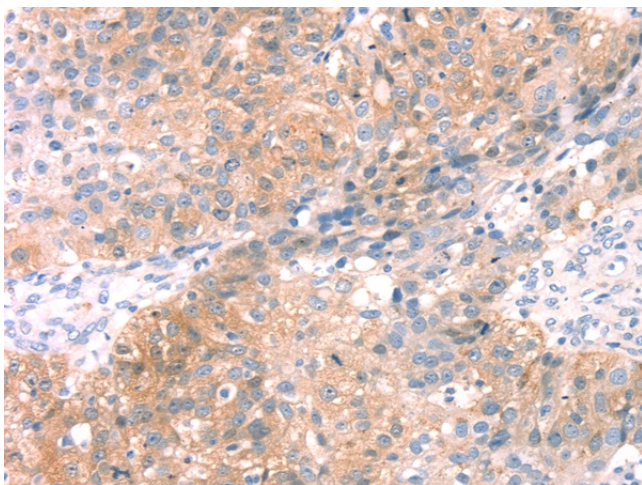
Gel: 12%SDS-PAGE
 Lysate: 40 µg
 Lane 1-6: Human placenta tissue
 hela cells
 hepg2 cells
 human fetal liver tissue
 A549 cells
 human normal kidney tissue
 Primary antibody: TA350431 (SNAP23 Antibody) at dilution 1/400
 Secondary antibody: Goat anti rabbit IgG at 1/8000 dilution
 Exposure time: 15 seconds



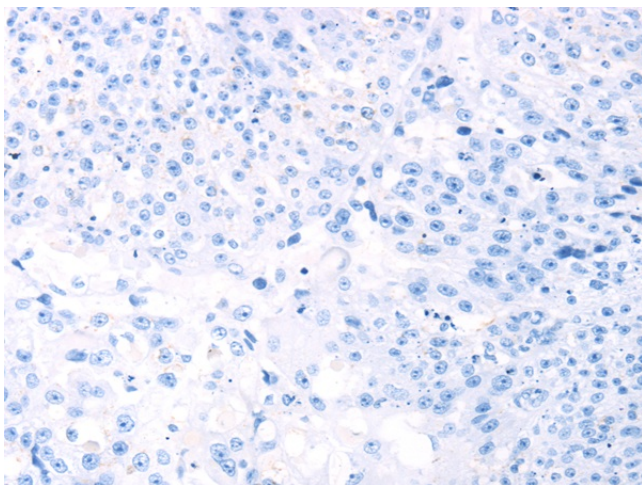
Immunohistochemistry of paraffin-embedded Human prostate cancer tissue using TA350431 (SNAP23 Antibody) at dilution 1/25 (Original magnification: x200)



Immunohistochemistry of paraffin-embedded Human prostate cancer tissue using TA350431 (SNAP23 Antibody) at dilution 1/25, treated with fusion protein. (Original magnification: ×200)



Immunohistochemistry of paraffin-embedded Human breast cancer tissue using TA350431 (SNAP23 Antibody) at dilution 1/25 (Original magnification: ×200)



Immunohistochemistry of paraffin-embedded Human breast cancer tissue using TA350431 (SNAP23 Antibody) at dilution 1/25, treated with fusion protein. (Original magnification: ×200)