

## Product datasheet for **TA350430S**

### **SNAI3 Rabbit Polyclonal Antibody**

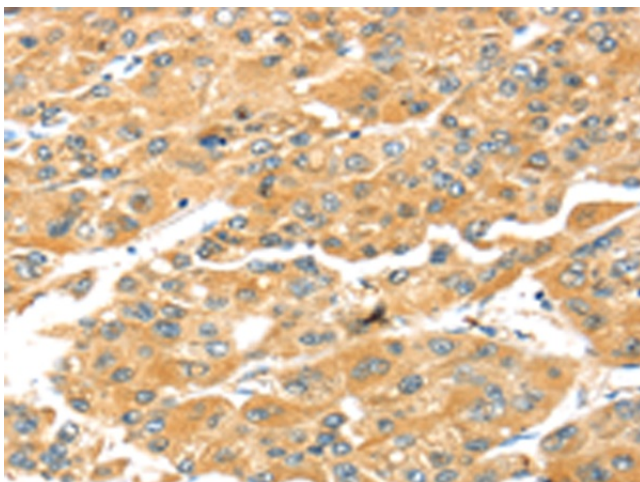
#### **Product data:**

Product Type:	Primary Antibodies
Applications:	IHC
Recommended Dilution:	IHC: 25-100 Positive control: Human liver cancer Predicted cell location: Cytoplasm
Reactivity:	Human
Host:	Rabbit
Isotype:	IgG
Clonality:	Polyclonal
Immunogen:	Fusion protein of human SNAI3
Formulation:	pH7.4 PBS, 0.05% NaN <sub>3</sub> , 40% Glycerol
Purification:	Antigen affinity purification
Conjugation:	Unconjugated
Storage:	Store at -20°C as received.
Stability:	Stable for 12 months from date of receipt.
Gene Name:	snail family transcriptional repressor 3
Database Link:	<a href="#">NP_840101</a> <a href="#">Entrez Gene 333929 Human</a> <a href="#">Q3KNW1</a>
Background:	SNAI3 is a member of the SNAIL gene family, named for the Drosophila snail gene, which plays roles in mesodermal formation during embryogenesis
Synonyms:	SMUC; SNAIL3; Zfp293; ZNF293

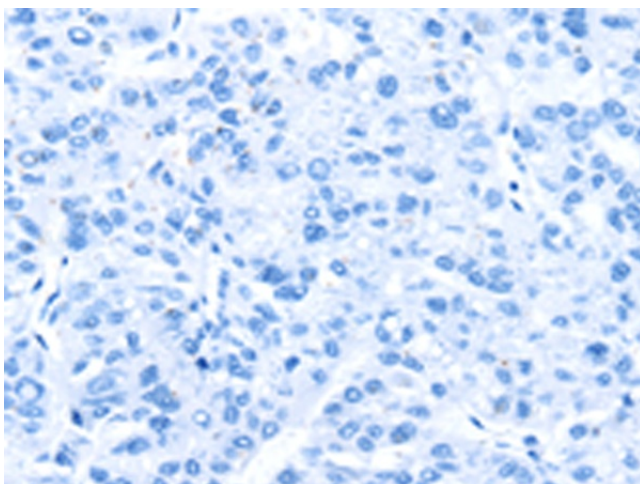


[View online »](#)

## Product images:



Immunohistochemistry of paraffin-embedded Human liver cancer tissue using [TA350430] (SNAI3 Antibody) at dilution 1/25 (Original magnification:  $\times 200$ )



Immunohistochemistry of paraffin-embedded Human liver cancer tissue using [TA350430] (SNAI3 Antibody) at dilution 1/25, treated with fusion protein. (Original magnification:  $\times 200$ )