

Product datasheet for **TA350428S**

SMYD3 Rabbit Polyclonal Antibody

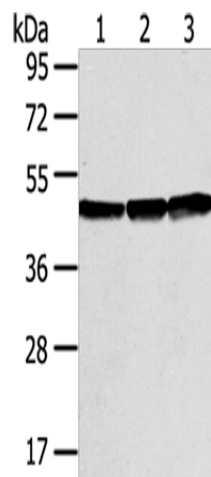
Product data:

| | |
|-------------------------|--|
| Product Type: | Primary Antibodies |
| Applications: | IHC, WB |
| Recommended Dilution: | WB: 500-2000 WB positive control: 293T, Hela and 231 cells IHC: 25-100 Positive control: Human liver cancer Predicted cell location: Cytoplasm |
| Reactivity: | Human, Mouse |
| Host: | Rabbit |
| Isotype: | IgG |
| Clonality: | Polyclonal |
| Immunogen: | Fusion protein of human SMYD3 |
| Formulation: | pH7.4 PBS, 0.05% NaN ₃ , 40% Glycerol |
| Purification: | Antigen affinity purification |
| Conjugation: | Unconjugated |
| Storage: | Store at -20°C as received. |
| Stability: | Stable for 12 months from date of receipt. |
| Predicted Protein Size: | 49 kDa |
| Gene Name: | SET and MYND domain containing 3 |
| Database Link: | NP_073580 Entrez Gene 69726 Mouse Entrez Gene 64754 Human Q9H7B4 |
| Background: | This gene encodes a histone methyltransferase which functions in RNA polymerase II complexes by an interaction with a specific RNA helicase. Multiple transcript variants encoding different isoforms have been found for this gene. |
| Synonyms: | bA74P14.1; KMT3E; ZMYND1; ZNFN3A1 |

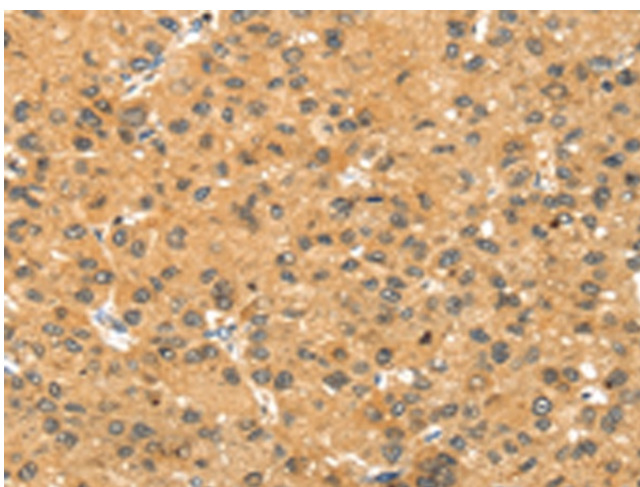


[View online »](#)

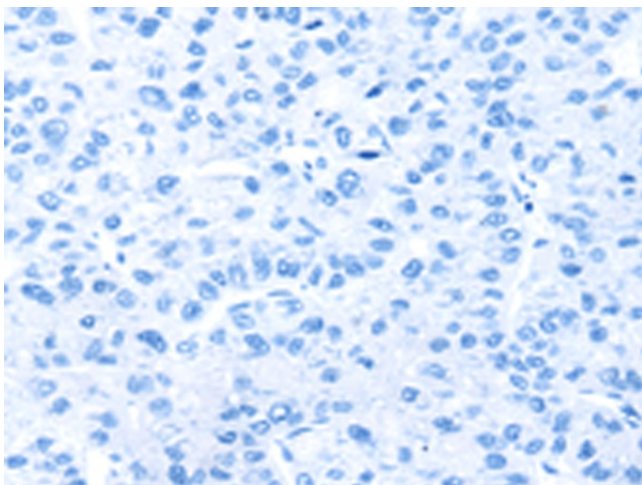
Product images:



Gel: 8%SDS-PAGE
Lysate: 40 μ g
Lane 1-3: 293T cells
HeLa cells
231 cells
Primary antibody: [TA350428] (SMYD3 Antibody)
at dilution 1/400
Secondary antibody: Goat anti rabbit IgG at
1/8000 dilution
Exposure time: 5 seconds



Immunohistochemistry of paraffin-embedded
Human liver cancer tissue using [TA350428]
(SMYD3 Antibody) at dilution 1/30 (Original
magnification: \times 200)



Immunohistochemistry of paraffin-embedded Human liver cancer tissue using [TA350428] (SMYD3 Antibody) at dilution 1/30, treated with fusion protein. (Original magnification: $\times 200$)