

## Product datasheet for **TA350425S**

### SLC29A4 Rabbit Polyclonal Antibody

#### Product data:

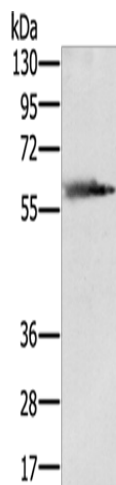
Product Type:	Primary Antibodies
Applications:	IHC, WB
Recommended Dilution:	WB: 200-1000 WB positive control: 293T cells IHC: 25-100 Positive control: Human liver cancer Predicted cell location: Cytoplasm
Reactivity:	Human
Host:	Rabbit
Isotype:	IgG
Clonality:	Polyclonal
Immunogen:	Fusion protein of human SLC29A4
Formulation:	pH7.4 PBS, 0.05% NaN <sub>3</sub> , 40% Glycerol
Purification:	Antigen affinity purification
Conjugation:	Unconjugated
Storage:	Store at -20°C as received.
Stability:	Stable for 12 months from date of receipt.
Predicted Protein Size:	58 kDa
Gene Name:	solute carrier family 29 member 4
Database Link:	<a href="#">NP_694979</a> <a href="#">Entrez Gene 222962 Human</a> <a href="#">Q7RTT9</a>
Background:	This gene encodes a member of the SLC29A/ENT transporter protein family. The encoded membrane protein catalyzes the reuptake of monoamines into presynaptic neurons, thus determining the intensity and duration of monoamine neural signaling. It has been shown to transport several compounds, including serotonin, dopamine, and the neurotoxin 1-methyl-4-phenylpyridinium. Alternative splicing results in multiple transcript variants.
Synonyms:	ENT4; PMAT



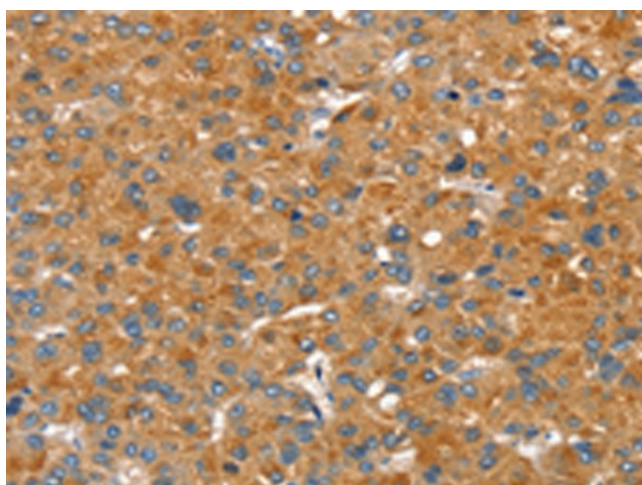
[View online »](#)

Protein Families: Transmembrane

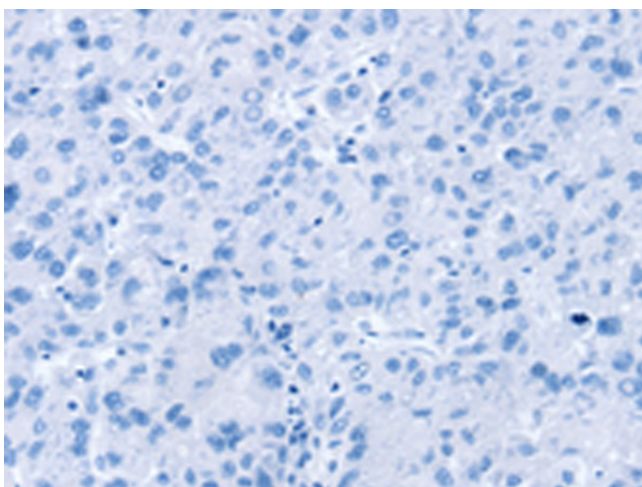
### Product images:



Gel: 8%SDS-PAGE  
Lysate: 40  $\mu$ g  
Lane: 293T cells  
Primary antibody: [TA350425] (SLC29A4 Antibody) at dilution 1/300  
Secondary antibody: Goat anti rabbit IgG at 1/8000 dilution  
Exposure time: 1 second



Immunohistochemistry of paraffin-embedded Human liver cancer tissue using [TA350425] (SLC29A4 Antibody) at dilution 1/20 (Original magnification:  $\times$ 200)



Immunohistochemistry of paraffin-embedded Human liver cancer tissue using [TA350425] (SLC29A4 Antibody) at dilution 1/20, treated with fusion protein. (Original magnification: ×200)