

## Product datasheet for **TA350424**

### FATP2 (SLC27A2) Rabbit Polyclonal Antibody

#### Product data:

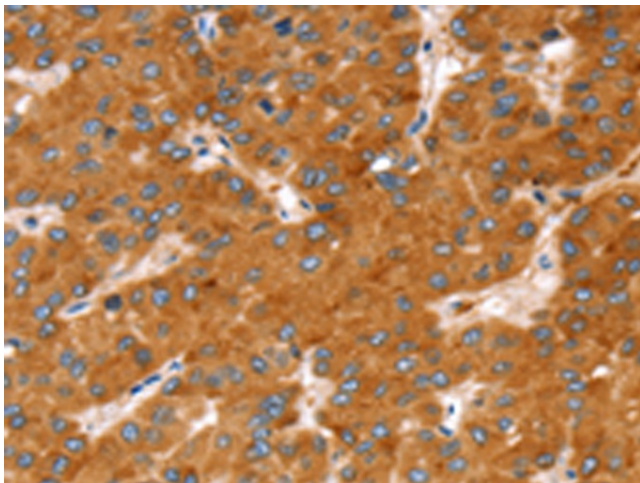
Product Type:	Primary Antibodies
Applications:	IHC
Recommended Dilution:	IHC: 25-100 Positive control: Human liver cancer Predicted cell location: Cytoplasm
Reactivity:	Human, Mouse, Rat
Host:	Rabbit
Isotype:	IgG
Clonality:	Polyclonal
Immunogen:	Fusion protein of human SLC27A2
Formulation:	pH7.4 PBS, 0.05% NaN <sub>3</sub> , 40% Glycerol
Concentration:	lot specific
Purification:	Antigen affinity purification
Conjugation:	Unconjugated
Storage:	Store at -20°C as received.
Stability:	Stable for 12 months from date of receipt.
Gene Name:	solute carrier family 27 member 2
Database Link:	<a href="#">NP_003636</a> <a href="#">Entrez Gene 26458 Mouse</a> <a href="#">Entrez Gene 65192 Rat</a> <a href="#">Entrez Gene 11001 Human</a> <a href="#">O14975</a>
Background:	The protein encoded by this gene is an isozyme of long-chain fatty-acid-coenzyme A ligase family. Although differing in substrate specificity, subcellular localization, and tissue distribution, all isozymes of this family convert free long-chain fatty acids into fatty acyl-CoA esters, and thereby play a key role in lipid biosynthesis and fatty acid degradation. This isozyme activates long-chain, branched-chain and very-long-chain fatty acids containing 22 or more carbons to their CoA derivatives.
Synonyms:	ACSVL1; FACVL1; FATP2; hFACVL1; HsT17226; VLACS; VLCS
Protein Families:	Transmembrane



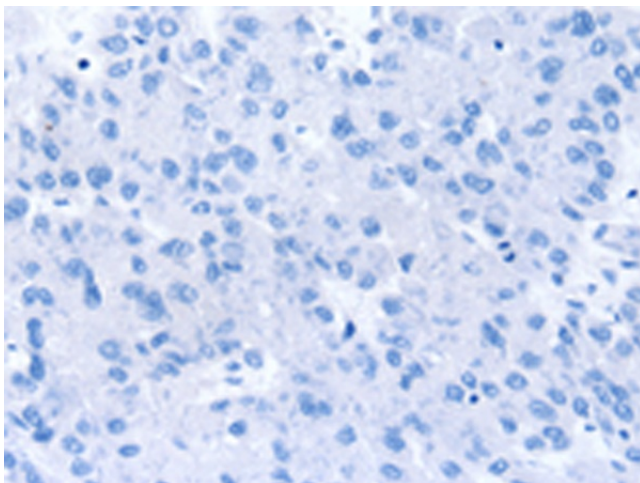
[View online »](#)

Protein Pathways: PPAR signaling pathway

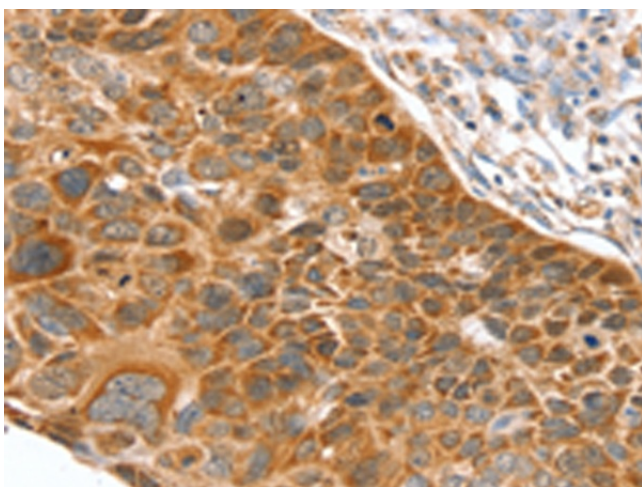
### Product images:



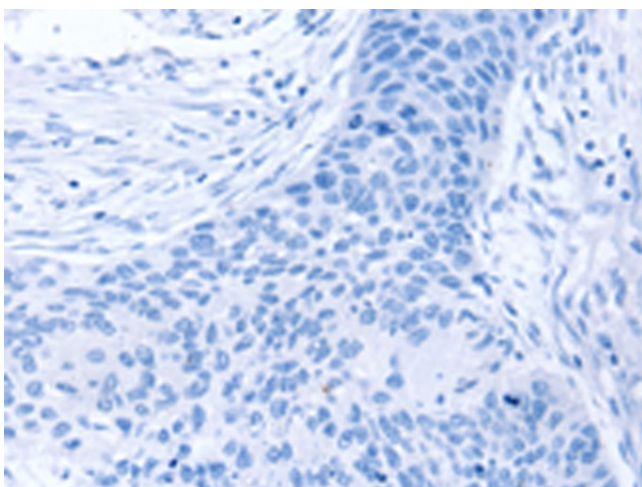
Immunohistochemistry of paraffin-embedded Human liver cancer tissue using TA350424 (SLC27A2 Antibody) at dilution 1/20 (Original magnification: ×200)



Immunohistochemistry of paraffin-embedded Human liver cancer tissue using TA350424 (SLC27A2 Antibody) at dilution 1/20, treated with fusion protein. (Original magnification: ×200)



Immunohistochemistry of paraffin-embedded Human esophagus cancer tissue using TA350424 (SLC27A2 Antibody) at dilution 1/20 (Original magnification:  $\times 200$ )



Immunohistochemistry of paraffin-embedded Human esophagus cancer tissue using TA350424 (SLC27A2 Antibody) at dilution 1/20, treated with fusion protein. (Original magnification:  $\times 200$ )