

Product datasheet for **TA350419S**

SRPX Rabbit Polyclonal Antibody

Product data:

Product Type:	Primary Antibodies
Applications:	IHC, WB
Recommended Dilution:	WB: 1000-5000 WB positive control: Human normal kidney and thyroid cancer tissue IHC: 25-100 Positive control: Human breast cancer Predicted cell location: Cytoplasm
Reactivity:	Human
Host:	Rabbit
Isotype:	IgG
Clonality:	Polyclonal
Immunogen:	Fusion protein of human SRPX
Formulation:	pH7.4 PBS, 0.05% NaN ₃ , 40% Glycerol
Purification:	Antigen affinity purification
Conjugation:	Unconjugated
Storage:	Store at -20°C as received.
Stability:	Stable for 12 months from date of receipt.
Predicted Protein Size:	52 kDa
Gene Name:	sushi repeat containing protein, X-linked
Database Link:	NP_006298 Entrez Gene 8406 Human P78539

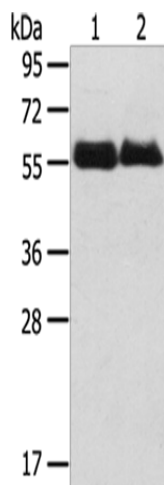
Background: SRPX gene also designated ETX1, resides within this region and is deleted in XLRP patients. There are at least two splice variants of SRPX, one of which contains a thirty amino acid signal peptide. Both variants contain three complement control protein domains, a hydrophobic region for membrane anchorage, and a cytoplasmic carboxy terminus. SRPX is expressed in retina and heart. SRPX is highly homologous to the drs (downregulated by v-src) human homolog, which suggests a role for SRPX as a tumor suppressor.



[View online »](#)

Synonyms: DRS; ETX1; HEL-S-83p; SRPX1

Product images:



Gel: 8%SDS-PAGE

Lysate: 40 μ g

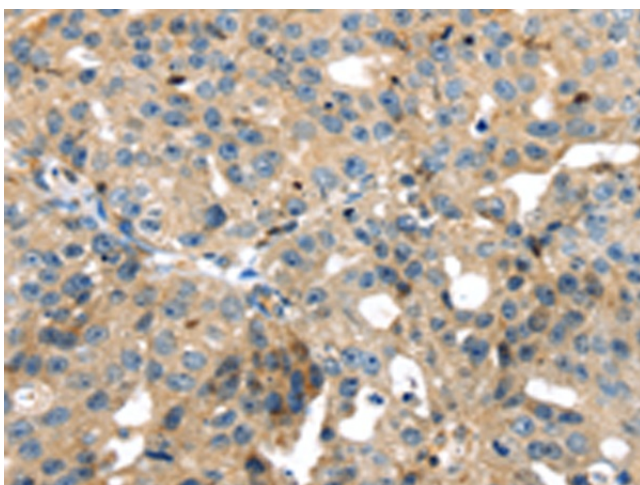
Lane 1-2: Human normal kidney tissue

Human thyroid cancer tissue

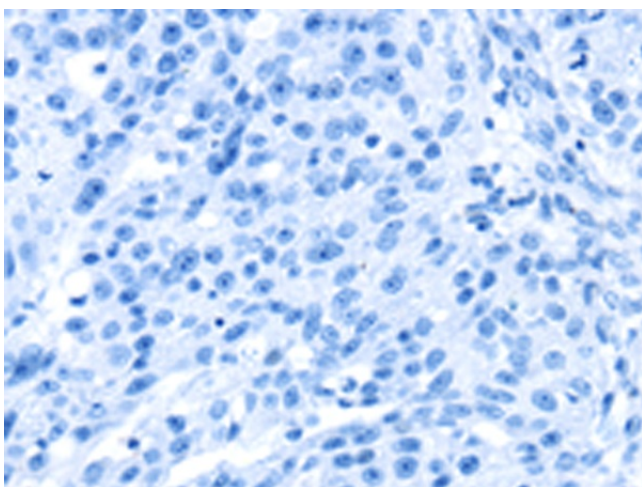
Primary antibody: [TA350419] (SRPX Antibody) at dilution 1/800

Secondary antibody: Goat anti rabbit IgG at 1/8000 dilution

Exposure time: 1 minute



Immunohistochemistry of paraffin-embedded Human breast cancer tissue using [TA350419] (SRPX Antibody) at dilution 1/35 (Original magnification: \times 200)



Immunohistochemistry of paraffin-embedded Human breast cancer tissue using [TA350419] (SRPX Antibody) at dilution 1/35, treated with fusion protein. (Original magnification: ×200)