

## Product datasheet for **TA350419**

### SRPX Rabbit Polyclonal Antibody

#### Product data:

Product Type:	Primary Antibodies
Applications:	IHC, WB
Recommended Dilution:	WB: 1000-5000 WB positive control: Human normal kidney and thyroid cancer tissue IHC: 25-100 Positive control: Human breast cancer Predicted cell location: Cytoplasm
Reactivity:	Human
Host:	Rabbit
Isotype:	IgG
Clonality:	Polyclonal
Immunogen:	Fusion protein of human SRPX
Formulation:	pH7.4 PBS, 0.05% NaN <sub>3</sub> , 40% Glycerol
Concentration:	lot specific
Purification:	Antigen affinity purification
Conjugation:	Unconjugated
Storage:	Store at -20°C as received.
Stability:	Stable for 12 months from date of receipt.
Predicted Protein Size:	52 kDa
Gene Name:	sushi repeat containing protein, X-linked
Database Link:	<a href="#">NP_006298</a> <a href="#">Entrez Gene 8406 Human</a> <a href="#">P78539</a>



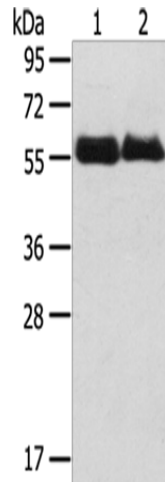
[View online »](#)

**Background:**

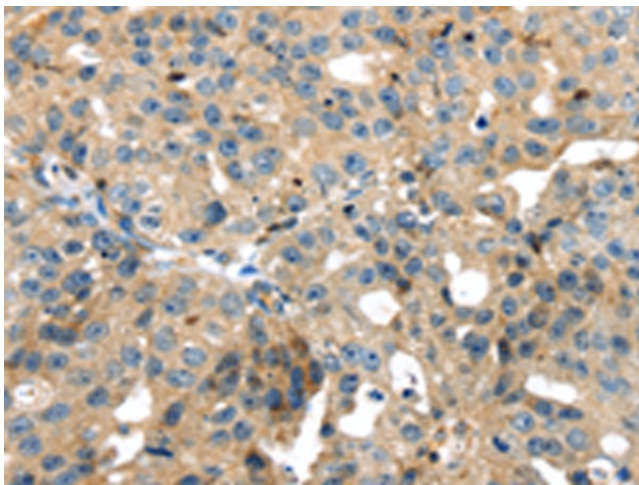
SRPX gene also designated ETX1, resides within this region and is deleted in XLRP patients. There are at least two splice variants of SRPX, one of which contains a thirty amino acid signal peptide. Both variants contain three complement control protein domains, a hydrophobic region for membrane anchorage, and a cytoplasmic carboxy terminus. SRPX is expressed in retina and heart. SRPX is highly homologous to the drs (downregulated by v-src) human homolog, which suggests a role for SRPX as a tumor suppressor.

**Synonyms:**

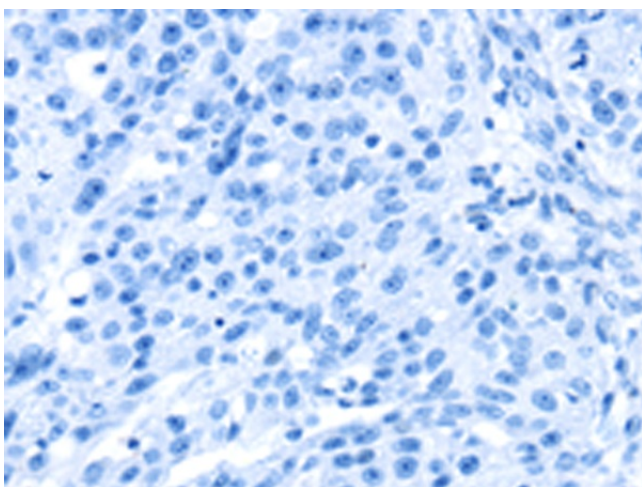
DRS; ETX1; HEL-S-83p; SRPX1

**Product images:**


Gel: 8%SDS-PAGE  
 Lysate: 40 µg  
 Lane 1-2: Human normal kidney tissue  
 Human thyroid cancer tissue  
 Primary antibody: TA350419 (SRPX Antibody) at dilution 1/800  
 Secondary antibody: Goat anti rabbit IgG at 1/8000 dilution  
 Exposure time: 1 minute



Immunohistochemistry of paraffin-embedded Human breast cancer tissue using TA350419 (SRPX Antibody) at dilution 1/35 (Original magnification: ×200)



Immunohistochemistry of paraffin-embedded Human breast cancer tissue using TA350419 (SRPX Antibody) at dilution 1/35, treated with fusion protein. (Original magnification:  $\times 200$ )