

Product datasheet for **TA350418S**

SRPR beta (SRPRB) Rabbit Polyclonal Antibody

Product data:

Product Type:	Primary Antibodies
Applications:	IHC, WB
Recommended Dilution:	WB: 1000-5000 WB positive control: Jurkat, Hela, 293T, 231 and HepG2 cells, Human normal liver and bladder carcinoma tissue IHC: 25-100 Positive control: Human breast cancer Predicted cell location: Cytoplasm
Reactivity:	Human, Mouse, Rat
Host:	Rabbit
Isotype:	IgG
Clonality:	Polyclonal
Immunogen:	Full length fusion protein
Formulation:	pH7.4 PBS, 0.05% NaN ₃ , 40% Glycerol
Purification:	Antigen affinity purification
Conjugation:	Unconjugated
Storage:	Store at -20°C as received.
Stability:	Stable for 12 months from date of receipt.
Predicted Protein Size:	30 kDa
Gene Name:	SRP receptor beta subunit
Database Link:	NP_067026 Entrez Gene 20818 Mouse Entrez Gene 300965 Rat Entrez Gene 58477 Human Q9Y5M8
Background:	The protein encoded by this gene has similarity to mouse protein which is a subunit of the signal recognition particle receptor (SR). This subunit is a transmembrane GTPase belonging to the GTPase superfamily. It anchors alpha subunit, a peripheral membrane GTPase, to the ER membrane. SR is required for the cotranslational targeting of both secretory and membrane proteins to the ER membrane.

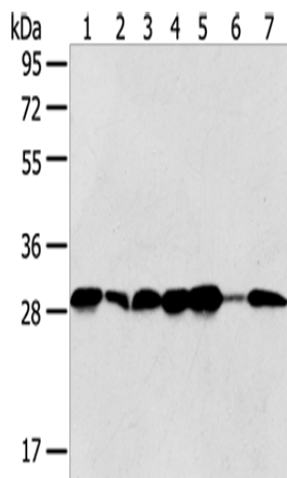


[View online »](#)

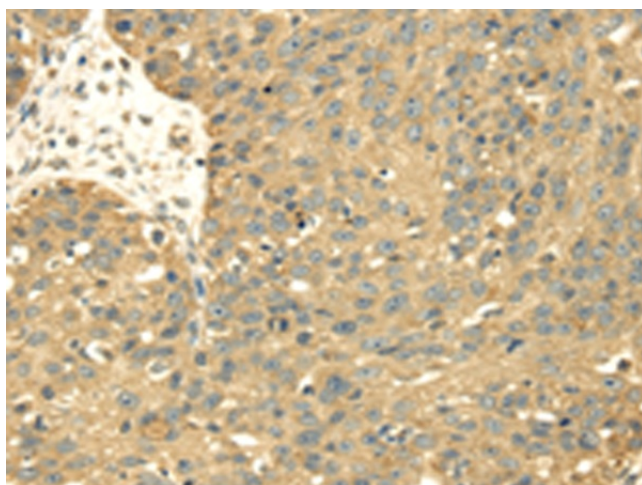
Synonyms: APMCF1

Protein Families: Druggable Genome, Transmembrane

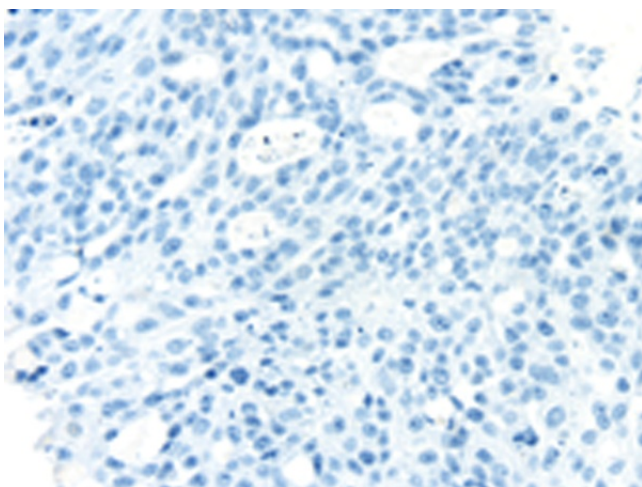
Product images:



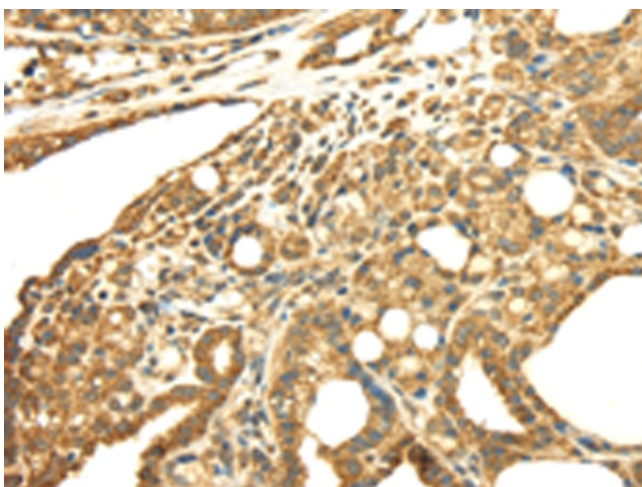
Gel: 8%SDS-PAGE
 Lysate: 40 µg
 Lane 1-7: Jurkat cells
 HeLa cells
 293T cells
 231 cells
 HepG2 cells
 Human normal liver tissue
 Human bladder carcinoma tissue
 Primary antibody: [TA350418] (SRPRB Antibody)
 at dilution 1/500
 Secondary antibody: Goat anti rabbit IgG at
 1/8000 dilution
 Exposure time: 5 seconds



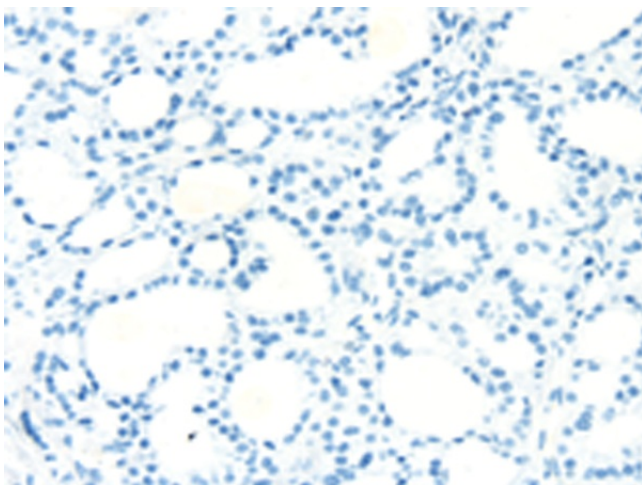
Immunohistochemistry of paraffin-embedded
 Human breast cancer tissue using [TA350418]
 (SRPRB Antibody) at dilution 1/30 (Original
 magnification: ×200)



Immunohistochemistry of paraffin-embedded Human breast cancer tissue using [TA350418] (SRPRB Antibody) at dilution 1/30, treated with fusion protein. (Original magnification: $\times 200$)



Immunohistochemistry of paraffin-embedded Human thyroid cancer tissue using [TA350418] (SRPRB Antibody) at dilution 1/30 (Original magnification: $\times 200$)



Immunohistochemistry of paraffin-embedded Human thyroid cancer tissue using [TA350418] (SRPRB Antibody) at dilution 1/30, treated with fusion protein. (Original magnification: $\times 200$)