

## Product datasheet for **TA350416**

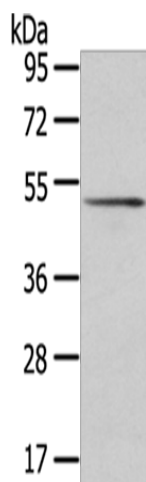
### SRP54 Rabbit Polyclonal Antibody

#### Product data:

Product Type:	Primary Antibodies
Applications:	IHC, WB
Recommended Dilution:	WB: 200-1000 WB positive control: Human bladder carcinoma tissue IHC: 25-100 Positive control: Human prostate cancer Predicted cell location: Cytoplasm
Reactivity:	Human, Mouse, Rat
Host:	Rabbit
Isotype:	IgG
Clonality:	Polyclonal
Immunogen:	Fusion protein of human SRP54
Formulation:	pH7.4 PBS, 0.05% NaN <sub>3</sub> , 40% Glycerol
Concentration:	lot specific
Purification:	Antigen affinity purification
Conjugation:	Unconjugated
Storage:	Store at -20°C as received.
Stability:	Stable for 12 months from date of receipt.
Predicted Protein Size:	56 kDa
Gene Name:	signal recognition particle 54kDa
Database Link:	<a href="#">NP_003127</a> <a href="#">Entrez Gene 6729 Human P61011</a>
Background:	Binds to the signal sequence of presecretory protein when they emerge from the ribosomes and transfers them to TRAM (translocating chain-associating membrane protein).
Synonyms:	signal recognition particle 54kDa
Protein Pathways:	Protein export



[View online »](#)

**Product images:**

Gel: 8%SDS-PAGE

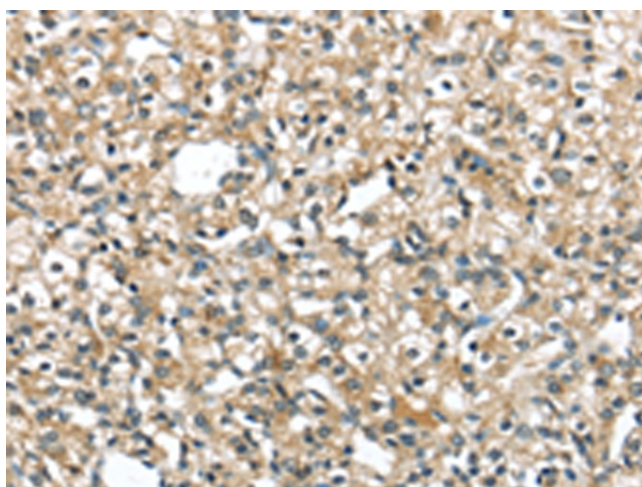
Lysate: 40 µg

Lane: Human bladder carcinoma tissue

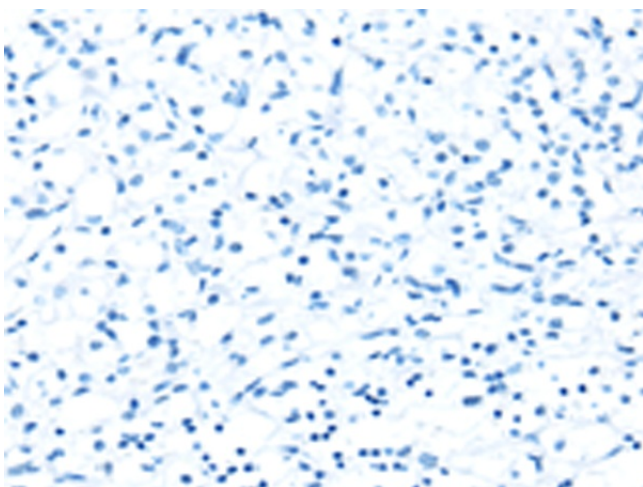
Primary antibody: TA350416 (SRP54 Antibody) at dilution 1/500

Secondary antibody: Goat anti rabbit IgG at 1/8000 dilution

Exposure time: 2 minutes



Immunohistochemistry of paraffin-embedded Human prostate cancer tissue using TA350416 (SRP54 Antibody) at dilution 1/40 (Original magnification: ×200)



Immunohistochemistry of paraffin-embedded Human prostate cancer tissue using TA350416 (SRP54 Antibody) at dilution 1/40, treated with fusion protein. (Original magnification: ×200)