

Product datasheet for **TA350415**

SIGLECL1 (SIGLEC12) Rabbit Polyclonal Antibody

Product data:

Product Type:	Primary Antibodies
Applications:	IHC, WB
Recommended Dilution:	ELISA: 1000-2000, WB: 200-1000, IHC: 25-100
Reactivity:	Human, Mouse
Host:	Rabbit
Isotype:	IgG
Clonality:	Polyclonal
Immunogen:	Fusion protein of human SIGLEC12
Formulation:	pH7.4 PBS, 0.05% NaN ₃ , 40% Glycerol
Concentration:	lot specific
Purification:	Antigen affinity purification
Conjugation:	Unconjugated
Storage:	Store at -20°C as received.
Stability:	Stable for 12 months from date of receipt.
Predicted Protein Size:	65 kDa
Gene Name:	sialic acid binding Ig like lectin 12 (gene/pseudogene)
Database Link:	NP_443729 Entrez Gene 89858 Human Q96PQ1

Background: Sialic acid-binding immunoglobulin-like lectins (SIGLECs) are a family of cell surface proteins belonging to the immunoglobulin superfamily. They mediate protein-carbohydrate interactions by selectively binding to different sialic acid moieties present on glycolipids and glycoproteins. This gene encodes a member of the SIGLEC3-like subfamily of SIGLECs. Members of this subfamily are characterized by an extracellular V-set immunoglobulin-like domain followed by two C2-set immunoglobulin-like domains, and the cytoplasmic tyrosine-based motifs ITIM and SLAM-like.

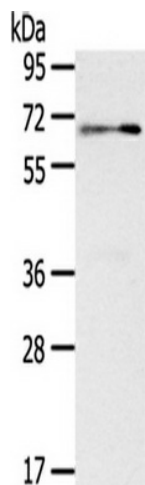
Synonyms: S2V; Siglec-XII; SIGLECL1; SLG



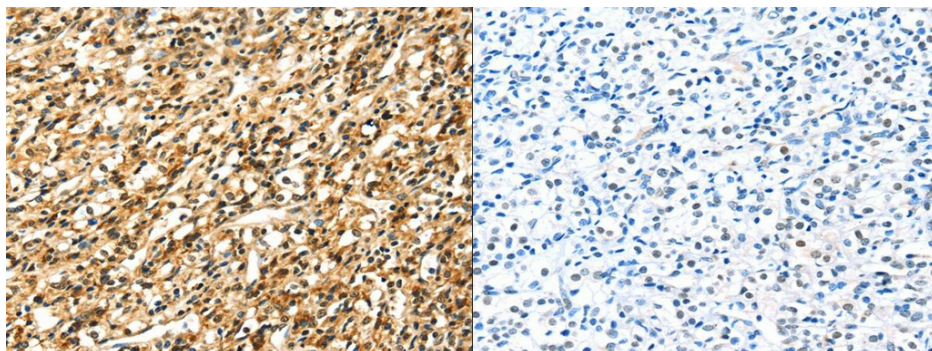
[View online »](#)

Protein Families: Druggable Genome, Stem cell - Pluripotency, Transmembrane

Product images:



Gel: 8%SDS-PAGE, Lysate: 40 ug, Primary antibody: (SIGLEC12 Antibody) at dilution 1/500 dilution, Secondary antibody: Goat anti rabbit IgG at 1/8000 dilution, Exposure time: 1 minute



The image on the left is immunohistochemistry of paraffin-embedded Human prostate cancer tissue using (SIGLEC12 Antibody) at dilution 1/35, on the right is treated with fusion protein. (Original magnification: $\times 200$)