

Product datasheet for **TA350414**

SIAH1 Rabbit Polyclonal Antibody

Product data:

Product Type:	Primary Antibodies
Applications:	IHC, WB
Recommended Dilution:	WB: 500-2000 WB positive control: LO2 cell, Mouse liver tissue, Mouse kidney tissue lysates IHC: 200-400 Positive control: Human gastric cancer Predicted cell location: Cytoplasm and Nucleus
Reactivity:	Human, Mouse, Rat
Host:	Rabbit
Isotype:	IgG
Clonality:	Polyclonal
Immunogen:	Full length fusion protein
Formulation:	pH7.4 PBS, 0.05% NaN ₃ , 40% Glycerol
Concentration:	lot specific
Purification:	Antigen affinity purification
Conjugation:	Unconjugated
Storage:	Store at -20°C as received.
Stability:	Stable for 12 months from date of receipt.
Predicted Protein Size:	31 kDa
Gene Name:	siah E3 ubiquitin protein ligase 1
Database Link:	NP_003022 Entrez Gene 140941 Rat Entrez Gene 6477 Human Q8IUQ4



[View online »](#)

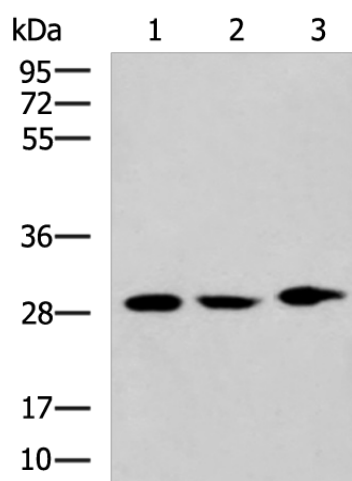
Background: This gene encodes a protein that is a member of the seven in absentia homolog (SIAH) family. The protein is an E3 ligase and is involved in ubiquitination and proteasome-mediated degradation of specific proteins. The activity of this ubiquitin ligase has been implicated in the development of certain forms of Parkinson's disease, the regulation of the cellular response to hypoxia and induction of apoptosis. Alternative splicing results in several additional transcript variants, some encoding different isoforms and others that have not been fully characterized.

Synonyms: SIAH1A

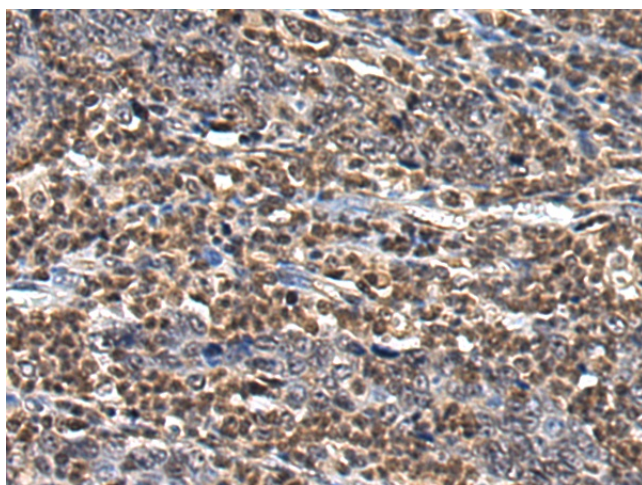
Protein Families: Druggable Genome

Protein Pathways: p53 signaling pathway, Ubiquitin mediated proteolysis, Wnt signaling pathway

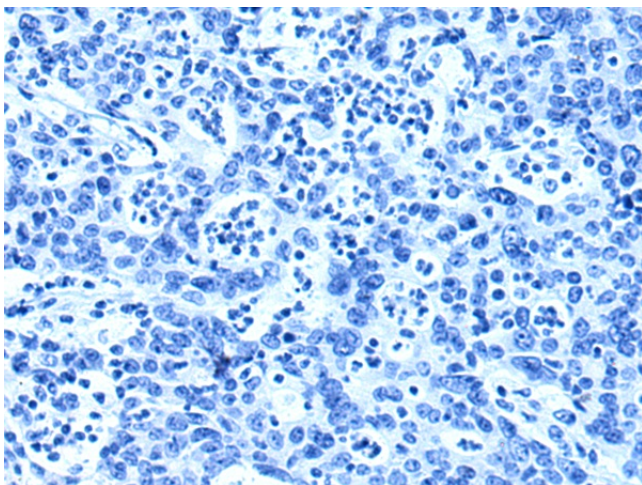
Product images:



Gel: 8%SDS-PAGE
 Lysate: 40 µg
 Lane 1-3: LO2 cell
 Mouse liver tissue
 Mouse kidney tissue lysates
 Primary antibody: TA350414 (SIAH1 Antibody) at dilution 1/600
 Secondary antibody: Goat anti rabbit IgG at 1/5000 dilution
 Exposure time: 70 seconds



Immunohistochemistry of paraffin-embedded Human gastric cancer tissue using TA350414 (SIAH1 Antibody) at dilution 1/200 (Original magnification: ×200)



Immunohistochemistry of paraffin-embedded Human gastric cancer tissue using TA350414 (SIAH1 Antibody) at dilution 1/200, treated with fusion protein. (Original magnification: $\times 200$)