

Product datasheet for **TA350412S**

SH3KBP1 Rabbit Polyclonal Antibody

Product data:

Product Type:	Primary Antibodies
Applications:	IHC, WB
Recommended Dilution:	WB: 500-2000 WB positive control: Jurkat cells IHC: 30-150 Positive control: Human liver cancer Predicted cell location: Cytoplasm
Reactivity:	Human, Mouse, Rat
Host:	Rabbit
Isotype:	IgG
Clonality:	Polyclonal
Immunogen:	Fusion protein of human SH3KBP1
Formulation:	pH7.4 PBS, 0.05% NaN ₃ , 40% Glycerol
Purification:	Antigen affinity purification
Conjugation:	Unconjugated
Storage:	Store at -20°C as received.
Stability:	Stable for 12 months from date of receipt.
Predicted Protein Size:	73 kDa
Gene Name:	SH3 domain containing kinase binding protein 1
Database Link:	NP_114098 Entrez Gene 58194 MouseEntrez Gene 84357 RatEntrez Gene 30011 Human Q96B97
Background:	This gene encodes an adapter protein that contains three N-terminal Src homology domains, a proline rich region and a C-terminal coiled-coil domain. The encoded protein facilitates protein-protein interactions and has been implicated in numerous cellular processes including apoptosis, cytoskeletal rearrangement, cell adhesion and in the regulation of clathrin-dependent endocytosis. Alternate splicing results in multiple transcript variants.
Synonyms:	CD2BP3; CIN85; GIG10; HSB-1; HSB1; MIG18

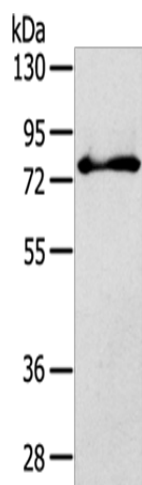


[View online »](#)

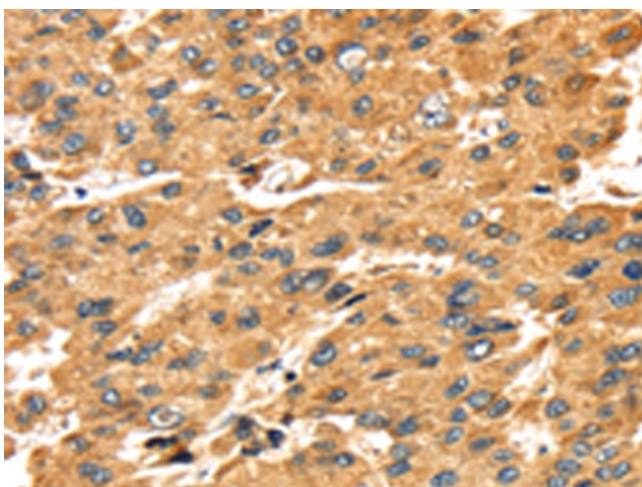
Protein Families: Druggable Genome

Protein Pathways: Endocytosis

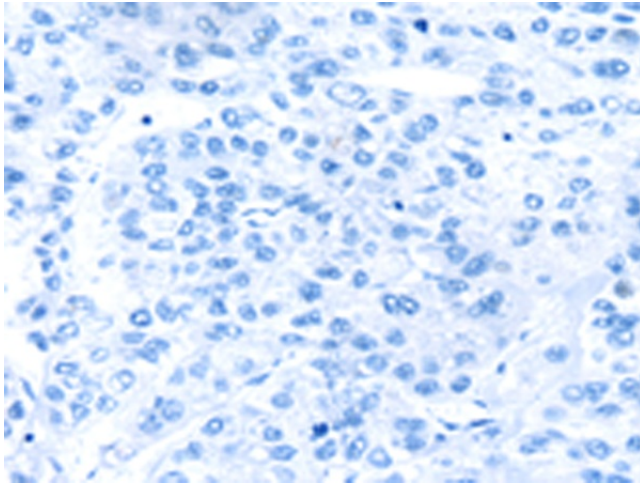
Product images:



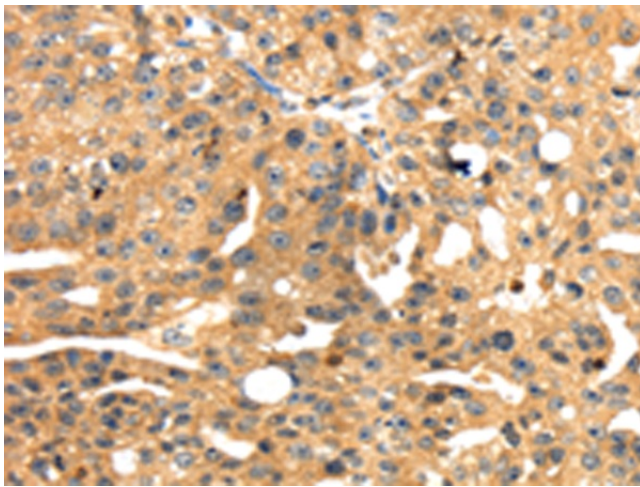
Gel: 8%SDS-PAGE
Lysate: 40 µg
Lane: Jurkat cells
Primary antibody: [TA350412] (SH3KBP1 Antibody) at dilution 1/800
Secondary antibody: Goat anti rabbit IgG at 1/8000 dilution
Exposure time: 30 seconds



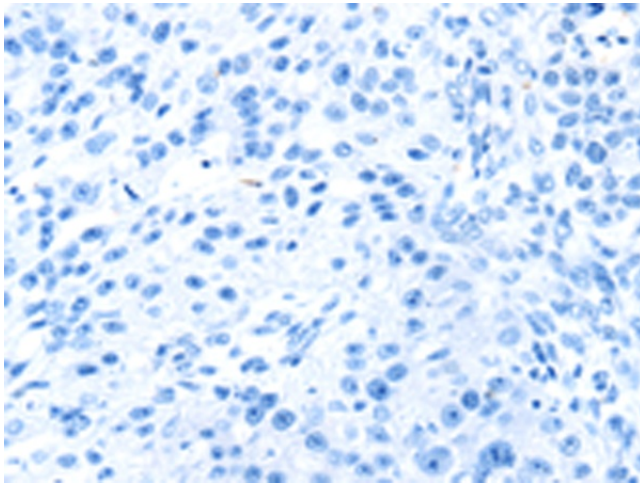
Immunohistochemistry of paraffin-embedded Human liver cancer tissue using [TA350412] (SH3KBP1 Antibody) at dilution 1/45 (Original magnification: ×200)



Immunohistochemistry of paraffin-embedded Human liver cancer tissue using [TA350412] (SH3KBP1 Antibody) at dilution 1/45, treated with fusion protein. (Original magnification: $\times 200$)



Immunohistochemistry of paraffin-embedded Human breast cancer tissue using [TA350412] (SH3KBP1 Antibody) at dilution 1/45 (Original magnification: $\times 200$)



Immunohistochemistry of paraffin-embedded Human breast cancer tissue using [TA350412] (SH3KBP1 Antibody) at dilution 1/45, treated with fusion protein. (Original magnification: $\times 200$)