

## Product datasheet for **TA350404S**

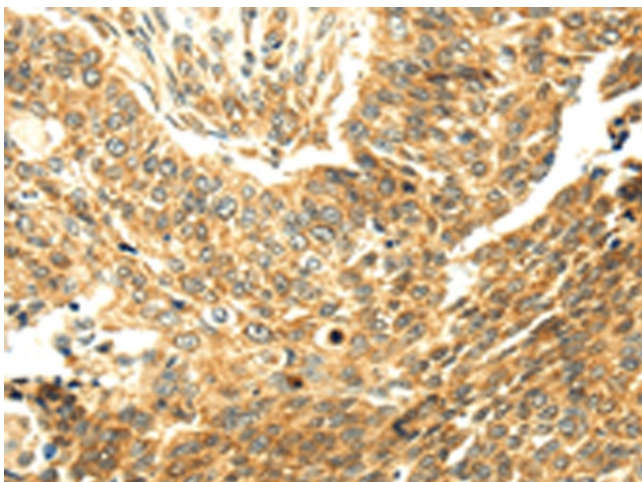
### **SERPINA12 Rabbit Polyclonal Antibody**

#### **Product data:**

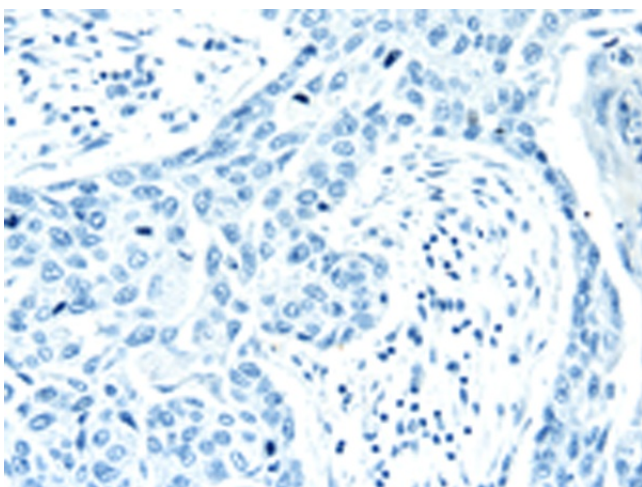
Product Type:	Primary Antibodies
Applications:	IHC
Recommended Dilution:	IHC: 30-150 Positive control: Human lung cancer Predicted cell location: Secreted
Reactivity:	Human
Host:	Rabbit
Isotype:	IgG
Clonality:	Polyclonal
Immunogen:	Fusion protein of human SERPINA12
Formulation:	pH7.4 PBS, 0.05% NaN <sub>3</sub> , 40% Glycerol
Purification:	Antigen affinity purification
Conjugation:	Unconjugated
Storage:	Store at -20°C as received.
Stability:	Stable for 12 months from date of receipt.
Gene Name:	serpin family A member 12
Database Link:	<a href="#">NP_776249</a> <a href="#">Entrez Gene 145264 Human</a> <a href="#">Q8IW75</a>
Background:	Adipokine that modulates insulin action by specifically inhibiting its target protease KLK7 in white adipose tissues.
Synonyms:	OL-64
Protein Families:	Druggable Genome, Secreted Protein



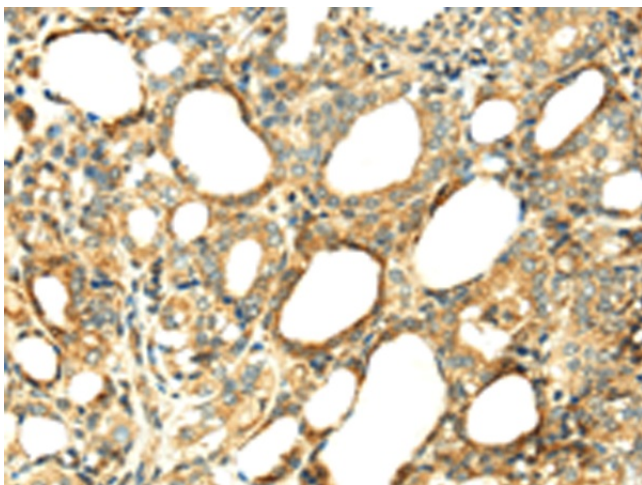
[View online »](#)

**Product images:**

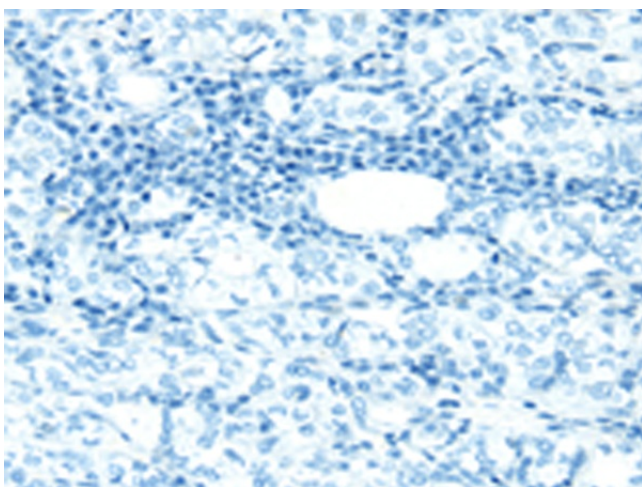
Immunohistochemistry of paraffin-embedded Human lung cancer tissue using [TA350404] (SERPINA12 Antibody) at dilution 1/40 (Original magnification:  $\times 200$ )



Immunohistochemistry of paraffin-embedded Human lung cancer tissue using [TA350404] (SERPINA12 Antibody) at dilution 1/40, treated with fusion protein. (Original magnification:  $\times 200$ )



Immunohistochemistry of paraffin-embedded Human thyroid cancer tissue using [TA350404] (SERPINA12 Antibody) at dilution 1/40 (Original magnification:  $\times 200$ )



Immunohistochemistry of paraffin-embedded Human thyroid cancer tissue using [TA350404] (SERPINA12 Antibody) at dilution 1/40, treated with fusion protein. (Original magnification:  $\times 200$ )