

## Product datasheet for **TA350403S**

### Septin 2 (SEPT2) Rabbit Polyclonal Antibody

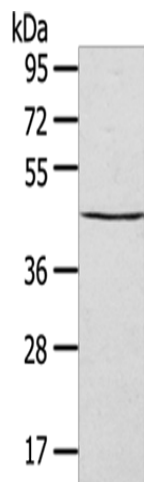
#### Product data:

Product Type:	Primary Antibodies
Applications:	IHC, WB
Recommended Dilution:	WB: 200-1000 WB positive control: HepG2 cells IHC: 25-100 Positive control: Human lung cancer Predicted cell location: Cytoplasm and Nucleus
Reactivity:	Human, Mouse, Rat
Host:	Rabbit
Isotype:	IgG
Clonality:	Polyclonal
Immunogen:	Full length fusion protein
Formulation:	pH7.4 PBS, 0.05% NaN <sub>3</sub> , 40% Glycerol
Purification:	Antigen affinity purification
Conjugation:	Unconjugated
Storage:	Store at -20°C as received.
Stability:	Stable for 12 months from date of receipt.
Predicted Protein Size:	41 kDa
Gene Name:	septin 2
Database Link:	<a href="#">NP_001008491</a> <a href="#">Entrez Gene 18000 Mouse</a> <a href="#">Entrez Gene 117515 Rat</a> <a href="#">Entrez Gene 4735 Human</a> <a href="#">Q15019</a>
Background:	Filament-forming cytoskeletal GTPase. Required for normal organization of the actin cytoskeleton. Plays a role in the biogenesis of polarized columnar-shaped epithelium by maintaining polyglutamylated microtubules, thus facilitating efficient vesicle transport, and by impeding MAP4 binding to tubulin. Required for the progression through mitosis.
Synonyms:	DIFF6; hNedd5; NEDD-5; NEDD5; Pnutl3

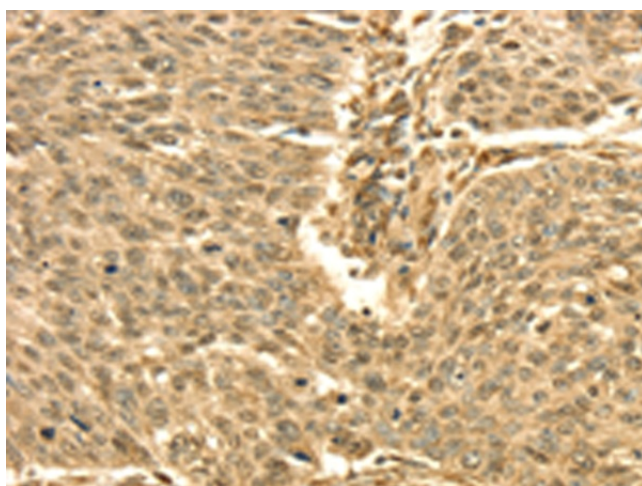


[View online »](#)

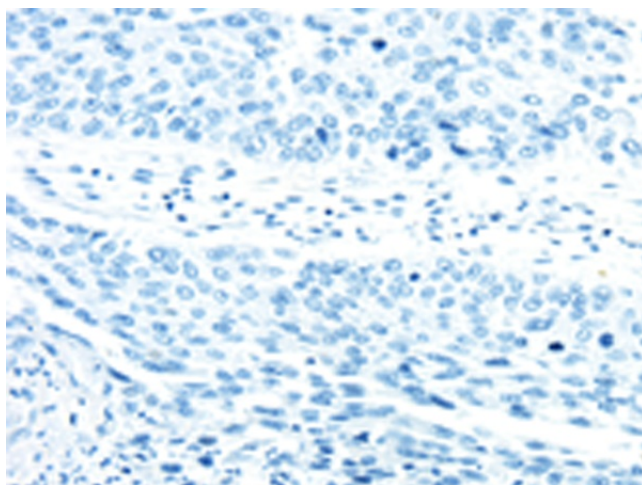
## Product images:



Gel: 8%SDS-PAGE  
Lysate: 40  $\mu$ g  
Lane: HepG2 cells  
Primary antibody: [TA350403] (SEPTIN2 Antibody) at dilution 1/400  
Secondary antibody: Goat anti rabbit IgG at 1/8000 dilution  
Exposure time: 10S



Immunohistochemistry of paraffin-embedded Human lung cancer tissue using [TA350403] (SEPTIN2 Antibody) at dilution 1/30 (Original magnification:  $\times$ 200)



Immunohistochemistry of paraffin-embedded Human lung cancer tissue using [TA350403] (SEPTIN2 Antibody) at dilution 1/30, treated with fusion protein. (Original magnification:  $\times$ 200)