

## Product datasheet for **TA350402S**

### SENP7 Rabbit Polyclonal Antibody

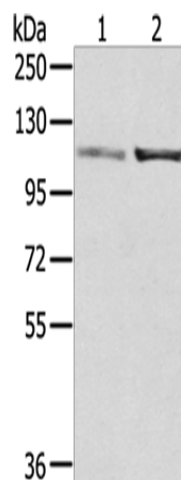
#### Product data:

Product Type:	Primary Antibodies
Applications:	WB
Recommended Dilution:	WB: 1000-5000 WB positive control: A172 and 231 cells
Reactivity:	Human, Mouse, Rat
Host:	Rabbit
Isotype:	IgG
Clonality:	Polyclonal
Immunogen:	Fusion protein of human SENP7
Formulation:	pH7.4 PBS, 0.05% NaN <sub>3</sub> , 40% Glycerol
Purification:	Antigen affinity purification
Conjugation:	Unconjugated
Storage:	Store at -20°C as received.
Stability:	Stable for 12 months from date of receipt.
Predicted Protein Size:	120 kDa
Gene Name:	SUMO1/sentrin specific peptidase 7
Database Link:	<a href="#">NP_065705</a> <a href="#">Entrez Gene 66315 Mouse</a> <a href="#">Entrez Gene 57337 Human</a> <a href="#">Q9BQF6</a>
Background:	The reversible posttranslational modification of proteins by the addition of small ubiquitin-like SUMO proteins (see SUMO1; MIM 601912) is required for many cellular processes. SUMO-specific proteases, such as SENP7, process SUMO precursors to generate a C-terminal diglycine motif required for the conjugation reaction.
Synonyms:	KIAA1707; MGC157730
Protein Families:	Druggable Genome, Protease



[View online »](#)

## Product images:



Gel: 6%SDS-PAGE  
Lysate: 40  $\mu$ g  
Lane 1-2: A172 cells  
231 cells  
Primary antibody: [TA350402] (SENP7 Antibody)  
at dilution 1/800  
Secondary antibody: Goat anti rabbit IgG at  
1/8000 dilution  
Exposure time: 30 seconds