

Product datasheet for **TA350400**

SENP5 Rabbit Polyclonal Antibody

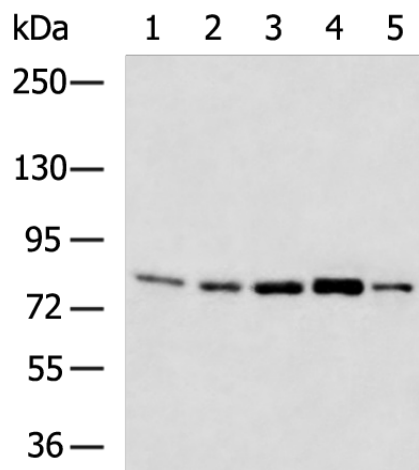
Product data:

Product Type:	Primary Antibodies
Applications:	WB
Recommended Dilution:	WB: 500-2000 WB positive control: Mouse testis tissue, 293T cell, K562 and NIH/3T3 cell, Mouse brain tissue lysates
Reactivity:	Human, Mouse
Host:	Rabbit
Isotype:	IgG
Clonality:	Polyclonal
Immunogen:	Fusion protein of human SENP5
Formulation:	pH7.4 PBS, 0.05% NaN ₃ , 40% Glycerol
Concentration:	lot specific
Purification:	Antigen affinity purification
Conjugation:	Unconjugated
Storage:	Store at -20°C as received.
Stability:	Stable for 12 months from date of receipt.
Predicted Protein Size:	87 kDa
Gene Name:	SUMO1/sentrin specific peptidase 5
Database Link:	NP_689912 Entrez Gene 320213 Mouse Entrez Gene 205564 Human Q96HI0
Background:	The reversible posttranslational modification of proteins by the addition of small ubiquitin-like SUMO proteins (see SUMO1; MIM 601912) is required for numerous biologic processes. SUMO-specific proteases, such as SENP5, are responsible for the initial processing of SUMO precursors to generate a C-terminal diglycine motif required for the conjugation reaction. They also have isopeptidase activity for the removal of SUMO from high molecular mass SUMO conjugates.
Synonyms:	DKFZp564O1016; FLJ42398; MGC27076


[View online »](#)

Protein Families: Druggable Genome, Protease

Product images:



Gel: 6%SDS-PAGE

Lysate: 40 µg

Lane 1-5: Mouse testis tissue

293T cell

K562 and NIH/3T3 cell

Mouse brain tissue lysates

Primary antibody: TA350400 (SENP5 Antibody) at dilution 1/200

Secondary antibody: Goat anti rabbit IgG at 1/5000 dilution

Exposure time: 40 seconds