

Product datasheet for **TA350399S**

SENP8 Rabbit Polyclonal Antibody

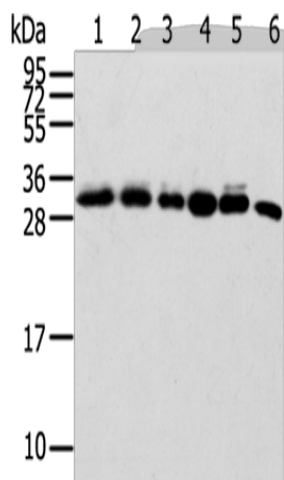
Product data:

Product Type:	Primary Antibodies
Applications:	IHC, WB
Recommended Dilution:	WB: 500-2000 WB positive control: 293T, Hela, Lovo, Raji and huvec cells, Mouse spleen tissue IHC: 25-100 Positive control: Human breast cancer Predicted cell location: Cytoplasm
Reactivity:	Human, Mouse, Rat
Host:	Rabbit
Isotype:	IgG
Clonality:	Polyclonal
Immunogen:	Full length fusion protein
Formulation:	pH7.4 PBS, 0.05% NaN ₃ , 40% Glycerol
Purification:	Antigen affinity purification
Conjugation:	Unconjugated
Storage:	Store at -20°C as received.
Stability:	Stable for 12 months from date of receipt.
Predicted Protein Size:	24 kDa
Gene Name:	SUMO/sentrin peptidase family member, NEDD8 specific
Database Link:	NP_660205 Entrez Gene 71599 MouseEntrez Gene 315723 RatEntrez Gene 123228 Human Q96LD8
Background:	This gene encodes a cysteine protease that is a member of the sentrin-specific protease family. The encoded protein is involved in processing and deconjugation of the ubiquitin-like protein termed, neural precursor cell expressed developmentally downregulated 8. Alternate splicing results in multiple transcript variants.
Synonyms:	DEN1; NEDP1; PRSC2
Protein Families:	Druggable Genome, Protease

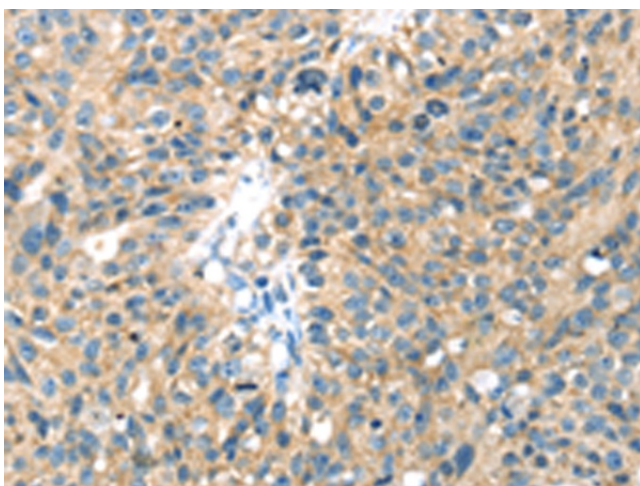


[View online »](#)

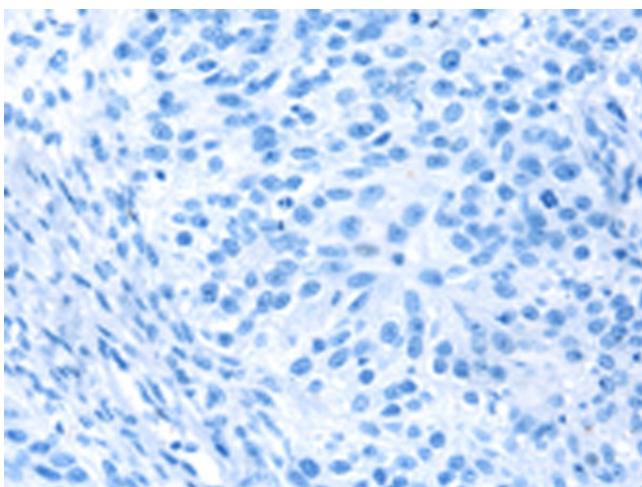
Product images:



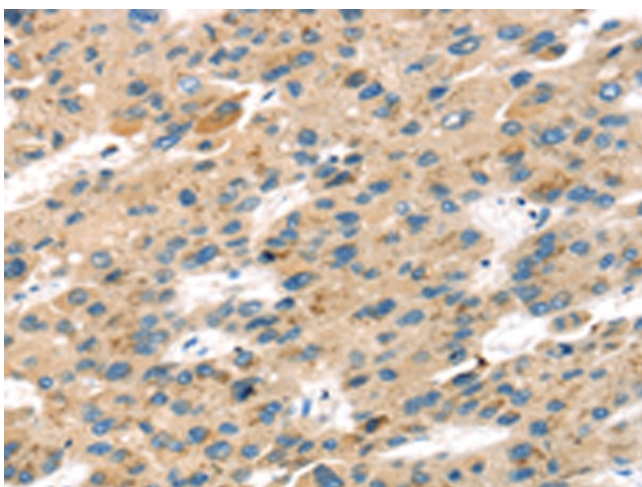
Gel: 12%SDS-PAGE
Lysate: 40 μ g
Lane 1-6: 293T cells
HeLa cells
Lovo cells
Raji cells
HUEVC cells
Mouse spleen tissue
Primary antibody: [TA350399] (SENP8 Antibody)
at dilution 1/600
Secondary antibody: Goat anti rabbit IgG at
1/8000 dilution
Exposure time: 20 seconds



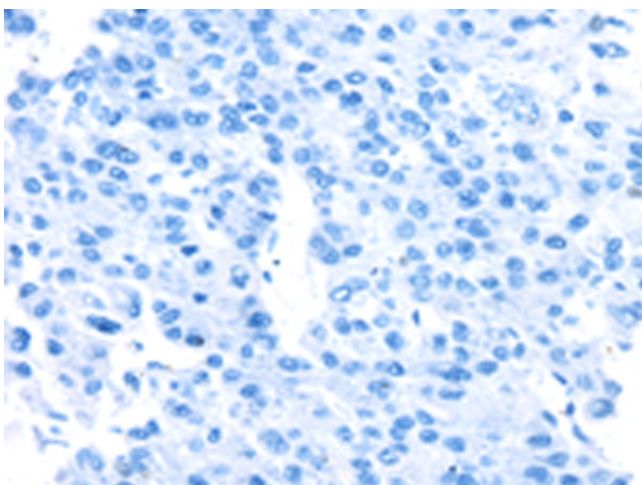
Immunohistochemistry of paraffin-embedded
Human breast cancer tissue using [TA350399]
(SENP8 Antibody) at dilution 1/40 (Original
magnification: $\times 200$)



Immunohistochemistry of paraffin-embedded Human breast cancer tissue using [TA350399] (SENP8 Antibody) at dilution 1/40, treated with fusion protein. (Original magnification: $\times 200$)



Immunohistochemistry of paraffin-embedded Human liver cancer tissue using [TA350399] (SENP8 Antibody) at dilution 1/40 (Original magnification: $\times 200$)



Immunohistochemistry of paraffin-embedded Human liver cancer tissue using [TA350399] (SENP8 Antibody) at dilution 1/40, treated with fusion protein. (Original magnification: $\times 200$)