

## Product datasheet for **TA350399**

### SENP8 Rabbit Polyclonal Antibody

#### Product data:

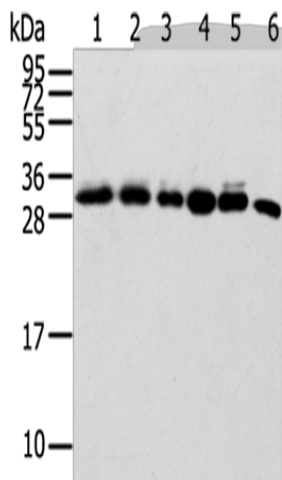
Product Type:	Primary Antibodies
Applications:	IHC, WB
Recommended Dilution:	WB: 500-2000 WB positive control: 293T, Hela, Lovo, Raji and huvec cells, Mouse spleen tissue IHC: 25-100 Positive control: Human breast cancer Predicted cell location: Cytoplasm
Reactivity:	Human, Mouse, Rat
Host:	Rabbit
Isotype:	IgG
Clonality:	Polyclonal
Immunogen:	Full length fusion protein
Formulation:	pH7.4 PBS, 0.05% NaN <sub>3</sub> , 40% Glycerol
Concentration:	lot specific
Purification:	Antigen affinity purification
Conjugation:	Unconjugated
Storage:	Store at -20°C as received.
Stability:	Stable for 12 months from date of receipt.
Predicted Protein Size:	24 kDa
Gene Name:	SUMO/sentrin peptidase family member, NEDD8 specific
Database Link:	<a href="#">NP_660205</a> <a href="#">Entrez Gene 71599 Mouse</a> <a href="#">Entrez Gene 315723 Rat</a> <a href="#">Entrez Gene 123228 Human</a> <a href="#">Q96LD8</a>
Background:	This gene encodes a cysteine protease that is a member of the sentrin-specific protease family. The encoded protein is involved in processing and deconjugation of the ubiquitin-like protein termed, neural precursor cell expressed developmentally downregulated 8. Alternate splicing results in multiple transcript variants.
Synonyms:	DEN1; NEDP1; PRSC2



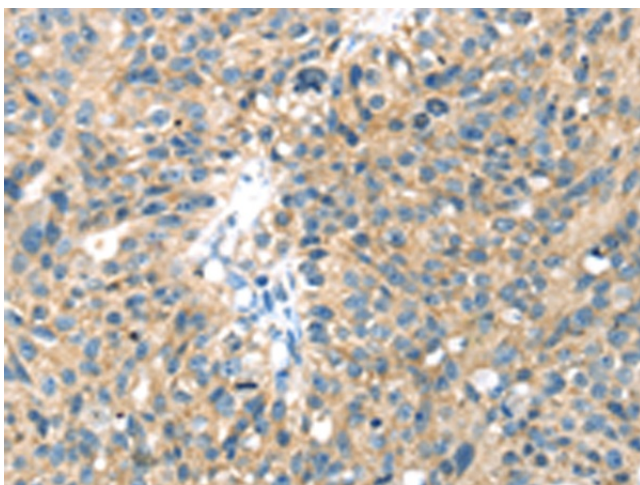
[View online »](#)

Protein Families: Druggable Genome, Protease

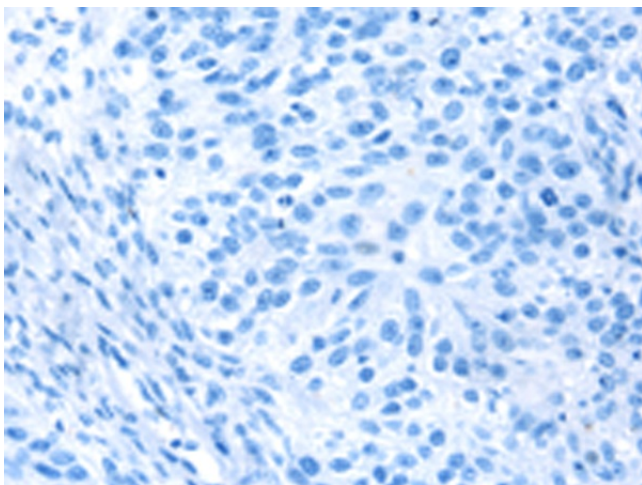
**Product images:**



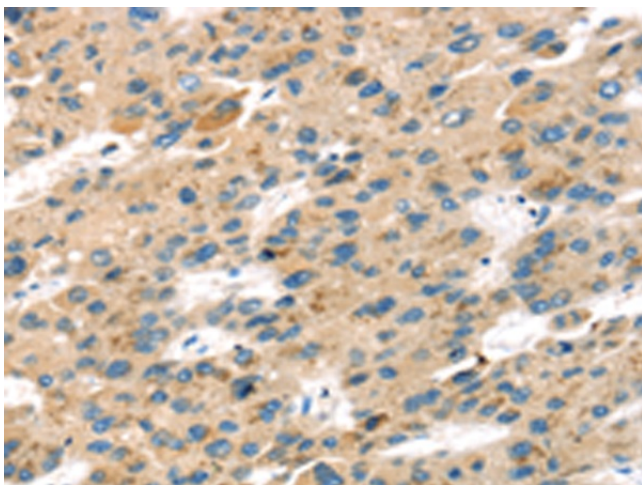
Gel: 12%SDS-PAGE  
 Lysate: 40 µg  
 Lane 1-6: 293T cells  
 HeLa cells  
 Lovo cells  
 Raji cells  
 HUEVC cells  
 Mouse spleen tissue  
 Primary antibody: TA350399 (SENP8 Antibody) at dilution 1/600  
 Secondary antibody: Goat anti rabbit IgG at 1/8000 dilution  
 Exposure time: 20 seconds



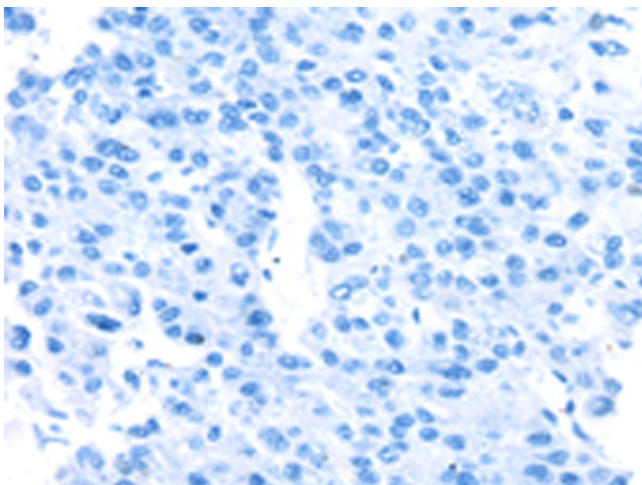
Immunohistochemistry of paraffin-embedded Human breast cancer tissue using TA350399 (SENP8 Antibody) at dilution 1/40 (Original magnification: ×200)



Immunohistochemistry of paraffin-embedded Human breast cancer tissue using TA350399 (SENP8 Antibody) at dilution 1/40, treated with fusion protein. (Original magnification:  $\times 200$ )



Immunohistochemistry of paraffin-embedded Human liver cancer tissue using TA350399 (SENP8 Antibody) at dilution 1/40 (Original magnification:  $\times 200$ )



Immunohistochemistry of paraffin-embedded Human liver cancer tissue using TA350399 (SENP8 Antibody) at dilution 1/40, treated with fusion protein. (Original magnification:  $\times 200$ )