

## Product datasheet for **TA350397**

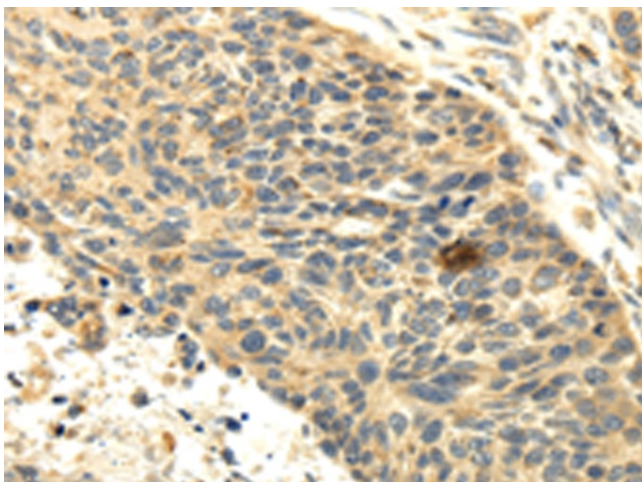
### SEMA4F Rabbit Polyclonal Antibody

#### Product data:

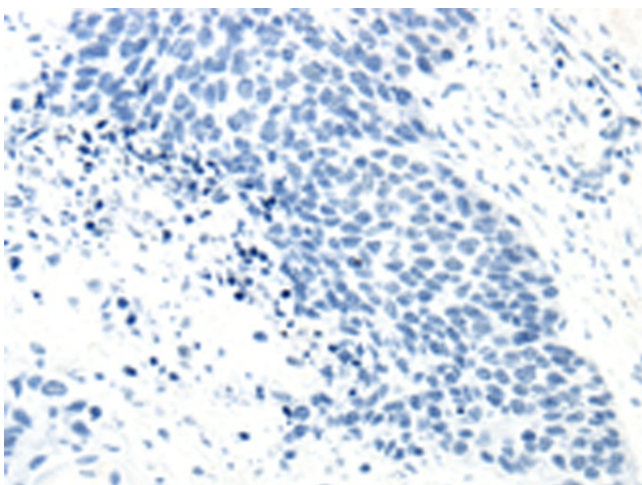
Product Type:	Primary Antibodies
Applications:	IHC
Recommended Dilution:	IHC: 25-100 Positive control: Human esophagus cancer Predicted cell location: Cell membrane
Reactivity:	Human, Mouse, Rat
Host:	Rabbit
Isotype:	IgG
Clonality:	Polyclonal
Immunogen:	Fusion protein of human SEMA4F
Formulation:	pH7.4 PBS, 0.05% NaN <sub>3</sub> , 40% Glycerol
Concentration:	lot specific
Purification:	Antigen affinity purification
Conjugation:	Unconjugated
Storage:	Store at -20°C as received.
Stability:	Stable for 12 months from date of receipt.
Gene Name:	ssemaphorin 4F
Database Link:	<a href="#">NP_004254</a> <a href="#">Entrez Gene 20355 Mouse</a> <a href="#">Entrez Gene 29745 Rat</a> <a href="#">Entrez Gene 10505 Human</a> <a href="#">O95754</a>
Background:	This gene encodes a transmembrane class IV semaphorin family protein, which plays a role in neural development. This gene may be involved in neurogenesis in prostate cancer, the development of neurofibromas, and breast cancer tumorigenesis. Alternative splicing results in multiple transcript variants.
Synonyms:	M-SEMA; m-Sema-M; PRO2353; S4F; SEMAM; SEMAW
Protein Families:	Transmembrane
Protein Pathways:	Axon guidance



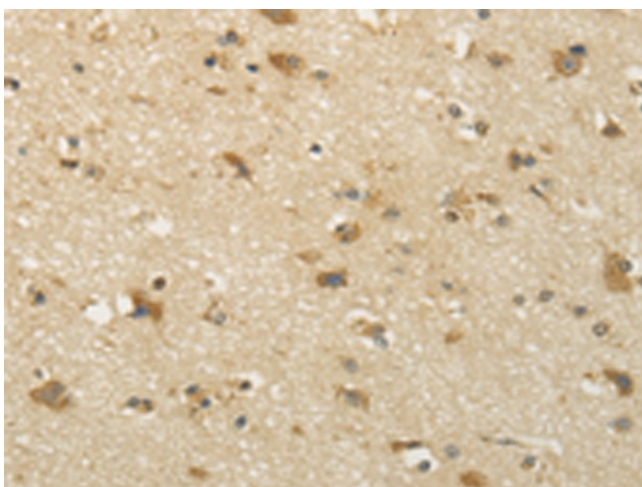
[View online »](#)

**Product images:**

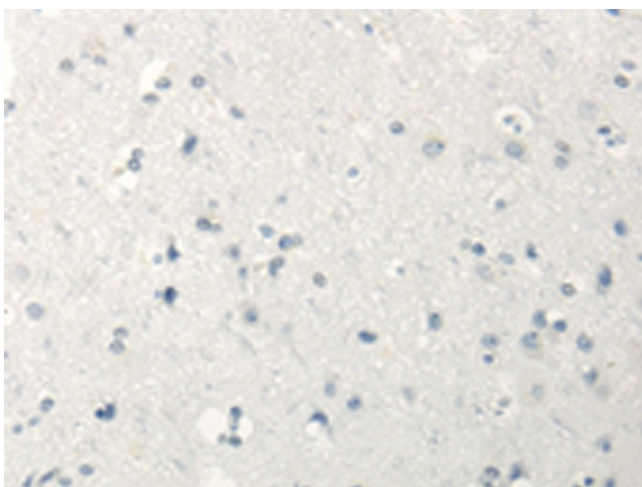
Immunohistochemistry of paraffin-embedded Human esophagus cancer tissue using TA350397 (SEMA4F Antibody) at dilution 1/35 (Original magnification:  $\times 200$ )



Immunohistochemistry of paraffin-embedded Human esophagus cancer tissue using TA350397 (SEMA4F Antibody) at dilution 1/35, treated with fusion protein. (Original magnification:  $\times 200$ )



Immunohistochemistry of paraffin-embedded Human brain tissue using TA350397 (SEMA4F Antibody) at dilution 1/35 (Original magnification: ×200)



Immunohistochemistry of paraffin-embedded Human brain tissue using TA350397 (SEMA4F Antibody) at dilution 1/35, treated with fusion protein. (Original magnification: ×200)