

Product datasheet for **TA350394S**

Seladin 1 (DHCR24) Rabbit Polyclonal Antibody

Product data:

Product Type:	Primary Antibodies
Applications:	IHC, WB
Recommended Dilution:	WB: 200-1000 WB positive control: Jurkat and HepG2 cells IHC: 30-150 Positive control: Human breast cancer Predicted cell location: Cytoplasm
Reactivity:	Human, Mouse, Rat
Host:	Rabbit
Isotype:	IgG
Clonality:	Polyclonal
Immunogen:	Fusion protein of human DHCR24
Formulation:	pH7.4 PBS, 0.05% NaN ₃ , 40% Glycerol
Purification:	Antigen affinity purification
Conjugation:	Unconjugated
Storage:	Store at -20°C as received.
Stability:	Stable for 12 months from date of receipt.
Predicted Protein Size:	60 kDa
Gene Name:	24-dehydrocholesterol reductase
Database Link:	NP_055577 Entrez Gene 74754 Mouse Entrez Gene 298298 Rat Entrez Gene 1718 Human Q15392



[View online »](#)

Background:

This gene encodes a flavin adenine dinucleotide (FAD)-dependent oxidoreductase which catalyzes the reduction of the delta-24 double bond of sterol intermediates during cholesterol biosynthesis. The protein contains a leader sequence that directs it to the endoplasmic reticulum membrane. Missense mutations in this gene have been associated with desmosterolosis. Also, reduced expression of the gene occurs in the temporal cortex of Alzheimer disease patients and overexpression has been observed in adrenal gland cancer cells.

Synonyms:

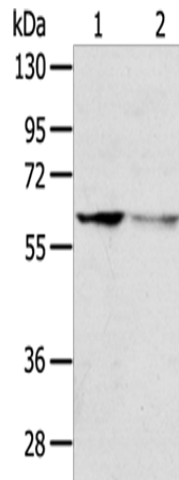
DCE; Nbla03646; seladin-1; SELADIN1

Protein Families:

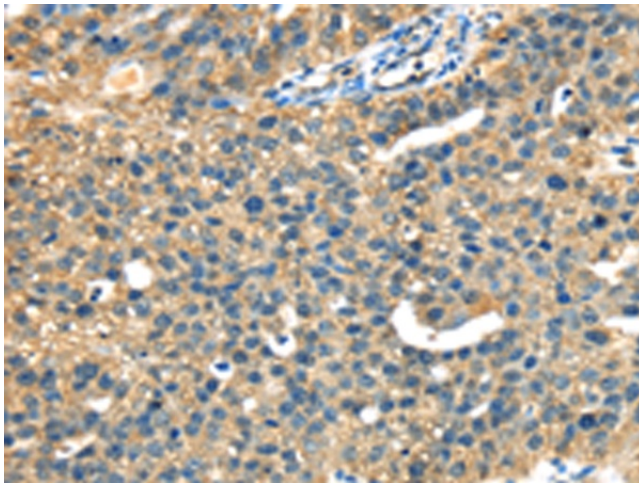
Druggable Genome, Stem cell - Pluripotency, Transmembrane

Protein Pathways:

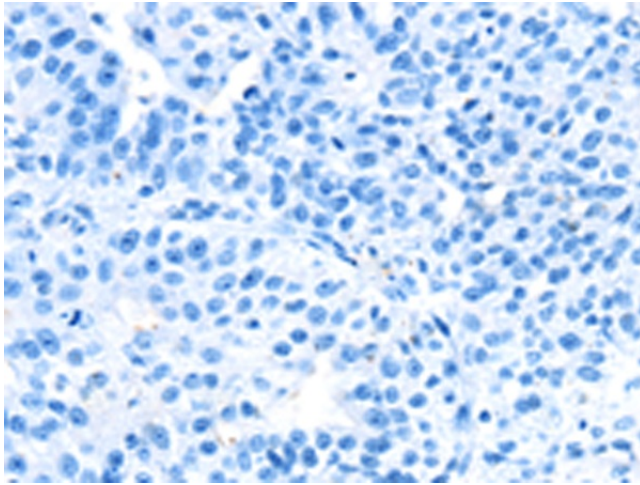
Metabolic pathways, Steroid biosynthesis

Product images:


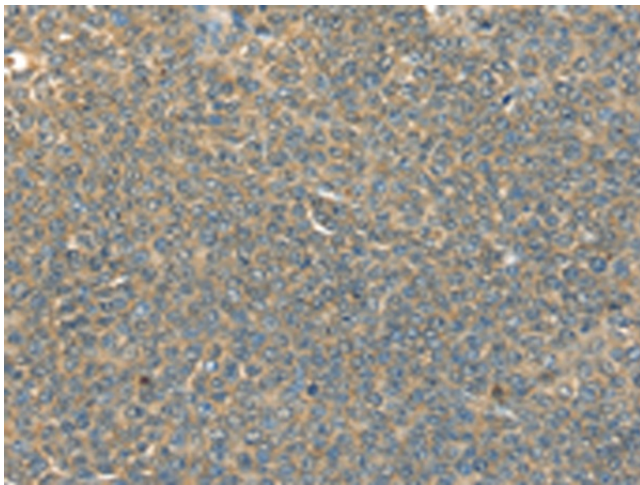
Gel: 8%SDS-PAGE
 Lysate: 40 µg
 Lane 1-2: Jurkat cells
 HepG2 cells
 Primary antibody: [TA350394] (DHCR24 Antibody)
 at dilution 1/600
 Secondary antibody: Goat anti rabbit IgG at
 1/8000 dilution
 Exposure time: 2 minutes



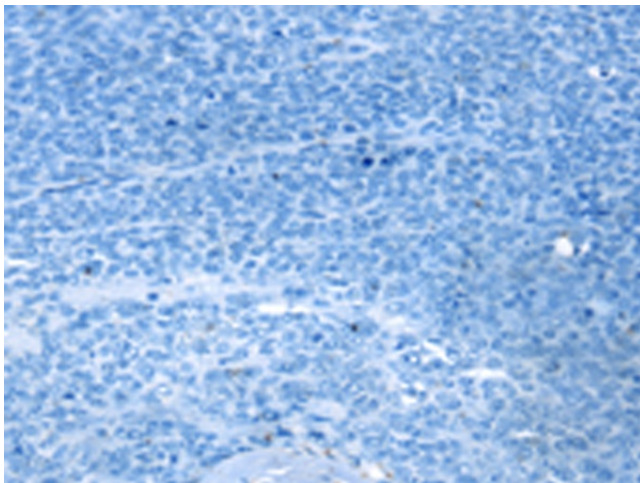
Immunohistochemistry of paraffin-embedded
 Human breast cancer tissue using [TA350394]
 (DHCR24 Antibody) at dilution 1/40 (Original
 magnification: ×200)



Immunohistochemistry of paraffin-embedded Human breast cancer tissue using [TA350394] (DHCR24 Antibody) at dilution 1/40, treated with fusion protein. (Original magnification: ×200)



Immunohistochemistry of paraffin-embedded Human ovarian cancer tissue using [TA350394] (DHCR24 Antibody) at dilution 1/40 (Original magnification: ×200)



Immunohistochemistry of paraffin-embedded Human ovarian cancer tissue using [TA350394] (DHCR24 Antibody) at dilution 1/40, treated with fusion protein. (Original magnification: ×200)