

## Product datasheet for **TA350393**

### SDHA Rabbit Polyclonal Antibody

#### Product data:

Product Type:	Primary Antibodies
Applications:	IHC, WB
Recommended Dilution:	WB: 500-2000 WB positive control: Mouse brain tissue and Hela cells, Jurkat cells and Mouse heart tissue IHC: 30-150 Positive control: Human breast cancer Predicted cell location: Cytoplasm
Reactivity:	Human, Mouse, Rat
Host:	Rabbit
Isotype:	IgG
Clonality:	Polyclonal
Immunogen:	Fusion protein of human SDHA
Formulation:	pH7.4 PBS, 0.05% NaN <sub>3</sub> , 40% Glycerol
Concentration:	lot specific
Purification:	Antigen affinity purification
Conjugation:	Unconjugated
Storage:	Store at -20°C as received.
Stability:	Stable for 12 months from date of receipt.
Predicted Protein Size:	73 kDa
Gene Name:	succinate dehydrogenase complex flavoprotein subunit A
Database Link:	<a href="#">NP_004159</a> <a href="#">Entrez Gene 66945 Mouse</a> <a href="#">Entrez Gene 157074 Rat</a> <a href="#">Entrez Gene 6389 Human</a> <a href="#">P31040</a>
Background:	This gene encodes a major catalytic subunit of succinate-ubiquinone oxidoreductase, a complex of the mitochondrial respiratory chain. The complex is composed of four nuclear-encoded subunits and is localized in the mitochondrial inner membrane. Mutations in this gene have been associated with a form of mitochondrial respiratory chain deficiency known as Leigh Syndrome. A pseudogene has been identified on chromosome 3q29.



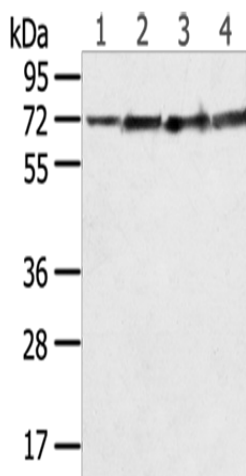
[View online »](#)

**Synonyms:** CMD1GG; FP; PGL5; SDH1; SDH2; SDHF

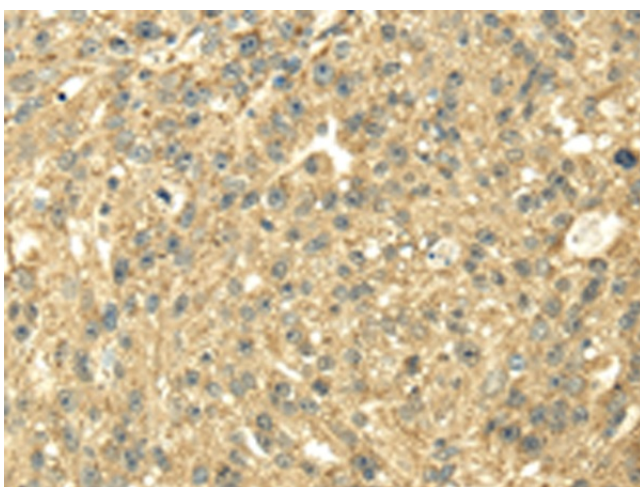
**Protein Families:** Druggable Genome

**Protein Pathways:** Alzheimer's disease, Citrate cycle (TCA cycle), Huntington's disease, Metabolic pathways, Oxidative phosphorylation, Parkinson's disease

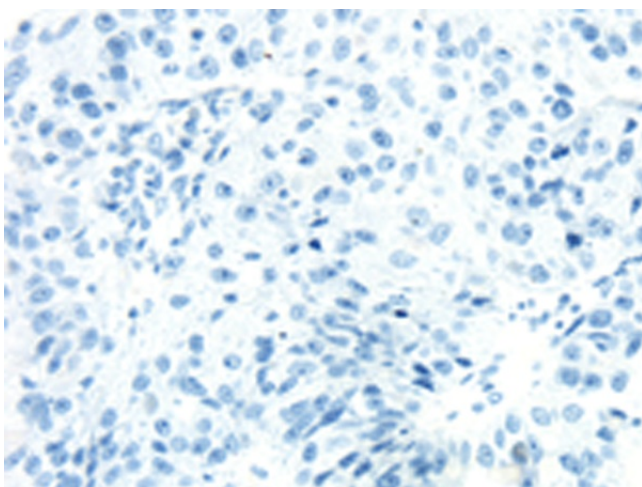
**Product images:**



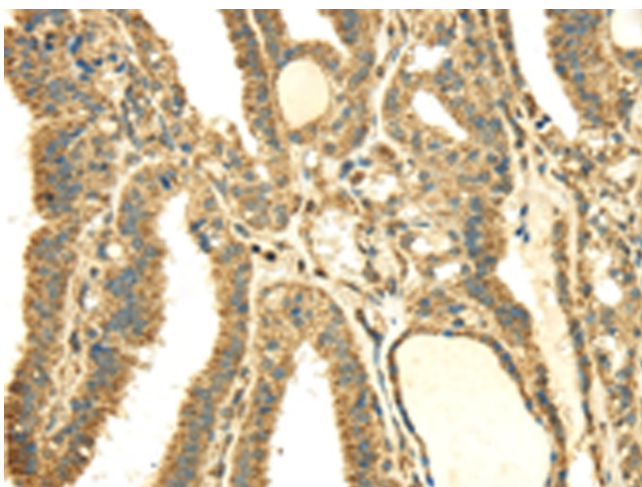
Gel: 8%SDS-PAGE  
 Lysate: 40 µg  
 Lane 1-4: Mouse brain tissue  
 HeLa cells  
 Jurkat cells  
 Mouse heart tissue  
 Primary antibody: TA350393 (SDHA Antibody) at dilution 1/600  
 Secondary antibody: Goat anti rabbit IgG at 1/8000 dilution  
 Exposure time: 5 seconds



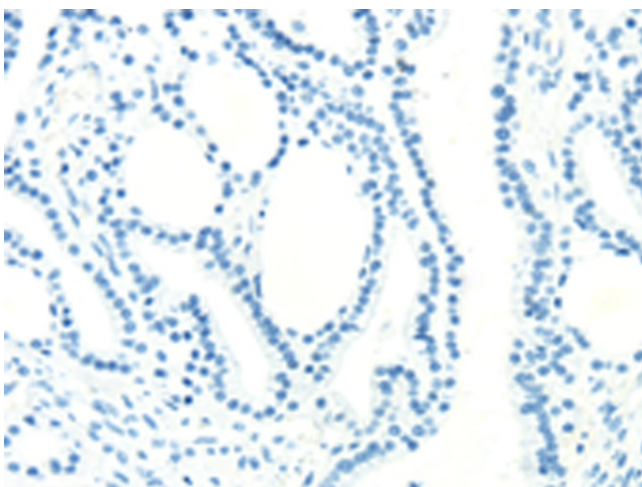
Immunohistochemistry of paraffin-embedded Human breast cancer tissue using TA350393 (SDHA Antibody) at dilution 1/40 (Original magnification: ×200)



Immunohistochemistry of paraffin-embedded Human breast cancer tissue using TA350393 (SDHA Antibody) at dilution 1/40, treated with fusion protein. (Original magnification:  $\times 200$ )



Immunohistochemistry of paraffin-embedded Human thyroid cancer tissue using TA350393 (SDHA Antibody) at dilution 1/40 (Original magnification:  $\times 200$ )



Immunohistochemistry of paraffin-embedded Human thyroid cancer tissue using TA350393 (SDHA Antibody) at dilution 1/40, treated with fusion protein. (Original magnification:  $\times 200$ )