

## Product datasheet for **TA350384S**

### S100P Rabbit Polyclonal Antibody

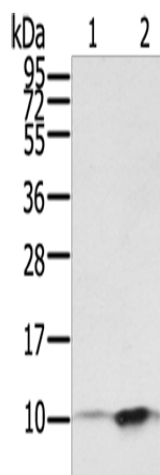
#### Product data:

Product Type:	Primary Antibodies
Applications:	WB
Recommended Dilution:	WB: 200-1000 WB positive control: A431 and hela cells
Reactivity:	Human
Host:	Rabbit
Isotype:	IgG
Clonality:	Polyclonal
Immunogen:	Fusion protein of human S100P
Formulation:	pH7.4 PBS, 0.05% NaN <sub>3</sub> , 40% Glycerol
Purification:	Antigen affinity purification
Conjugation:	Unconjugated
Storage:	Store at -20°C as received.
Stability:	Stable for 12 months from date of receipt.
Predicted Protein Size:	10 kDa
Gene Name:	S100 calcium binding protein P
Database Link:	<a href="#">NP_005971</a> <a href="#">Entrez Gene 6286 Human</a> <a href="#">P25815</a>
Background:	The protein encoded by this gene is a member of the S100 family of proteins containing 2 EF-hand calcium-binding motifs. S100 proteins are localized in the cytoplasm and/or nucleus of a wide range of cells, and involved in the regulation of a number of cellular processes such as cell cycle progression and differentiation. S100 genes include at least 13 members which are located as a cluster on chromosome 1q21; however, this gene is located at 4p16. This protein, in addition to binding Ca <sup>2+</sup> , also binds Zn <sup>2+</sup> and Mg <sup>2+</sup> .
Synonyms:	MIG9



[View online »](#)

## Product images:



Gel: 12%SDS-PAGE  
Lysate: 40  $\mu$ g  
Lane 1-2: A431 cells  
hela cells  
Primary antibody: [TA350384] (S100P Antibody)  
at dilution 1/650  
Secondary antibody: Goat anti rabbit IgG at  
1/8000 dilution  
Exposure time: 30 seconds