

Product datasheet for **TA350380S**

S100A11 Rabbit Polyclonal Antibody

Product data:

Product Type:	Primary Antibodies
Applications:	IHC, WB
Recommended Dilution:	WB: 1000-5000 WB positive control: Hepg2 and A549 cells IHC: 25-100 Positive control: Human lung cancer Predicted cell location: Cytoplasm and Nucleus
Reactivity:	Human, Mouse, Rat
Host:	Rabbit
Isotype:	IgG
Clonality:	Polyclonal
Immunogen:	Fusion protein of human S100A11
Formulation:	pH7.4 PBS, 0.05% NaN ₃ , 40% Glycerol
Purification:	Antigen affinity purification
Conjugation:	Unconjugated
Storage:	Store at -20°C as received.
Stability:	Stable for 12 months from date of receipt.
Predicted Protein Size:	12 kDa
Gene Name:	S100 calcium binding protein A11
Database Link:	NP_005611 Entrez Gene 20195 MouseEntrez Gene 445415 RatEntrez Gene 6282 Human P31949

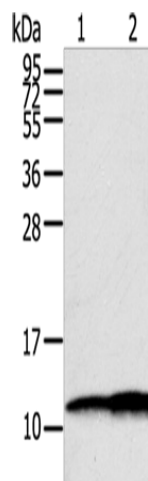
Background: The protein encoded by this gene is a member of the S100 family of proteins containing 2 EF-hand calcium-binding motifs. S100 proteins are localized in the cytoplasm and/or nucleus of a wide range of cells, and involved in the regulation of a number of cellular processes such as cell cycle progression and differentiation. S100 genes include at least 13 members which are located as a cluster on chromosome 1q21. This protein may function in motility, invasion, and tubulin polymerization.



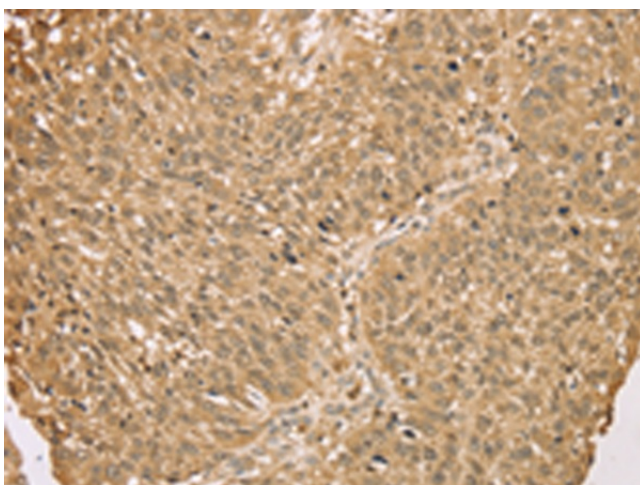
[View online »](#)

Synonyms: HEL-S-43; MLN70; S100C

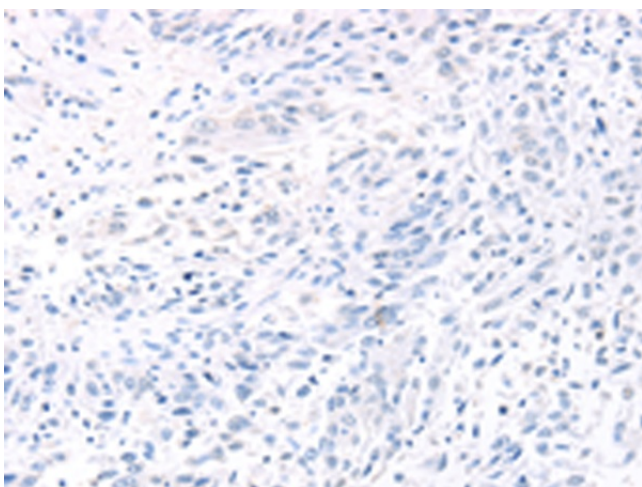
Product images:



Gel: 12%SDS-PAGE
Lysate: 40 μ g
Lane 1-2: Hepg2 cells
A549 cells
Primary antibody: [TA350380] (S100A11 Antibody)
at dilution 1/600
Secondary antibody: Goat anti rabbit IgG at
1/8000 dilution
Exposure time: 1 seconds



Immunohistochemistry of paraffin-embedded
Human lung cancer tissue using [TA350380]
(S100A11 Antibody) at dilution 1/25 (Original
magnification: \times 200)



Immunohistochemistry of paraffin-embedded Human lung cancer tissue using [TA350380] (S100A11 Antibody) at dilution 1/25, treated with fusion protein. (Original magnification: $\times 200$)