

## Product datasheet for **TA350380**

### **S100A11 Rabbit Polyclonal Antibody**

#### **Product data:**

Product Type:	Primary Antibodies
Applications:	IHC, WB
Recommended Dilution:	WB: 1000-5000 WB positive control: Hepg2 and A549 cells IHC: 25-100 Positive control: Human lung cancer Predicted cell location: Cytoplasm and Nucleus
Reactivity:	Human, Mouse, Rat
Host:	Rabbit
Isotype:	IgG
Clonality:	Polyclonal
Immunogen:	Fusion protein of human S100A11
Formulation:	pH7.4 PBS, 0.05% NaN <sub>3</sub> , 40% Glycerol
Concentration:	lot specific
Purification:	Antigen affinity purification
Conjugation:	Unconjugated
Storage:	Store at -20°C as received.
Stability:	Stable for 12 months from date of receipt.
Predicted Protein Size:	12 kDa
Gene Name:	S100 calcium binding protein A11
Database Link:	<a href="#">NP_005611</a> <a href="#">Entrez Gene 20195 Mouse</a> <a href="#">Entrez Gene 445415 Rat</a> <a href="#">Entrez Gene 6282 Human</a> <a href="#">P31949</a>



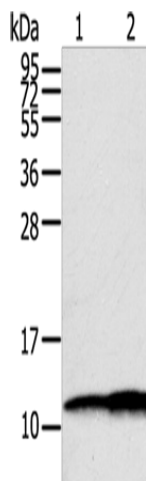
[View online »](#)

**Background:**

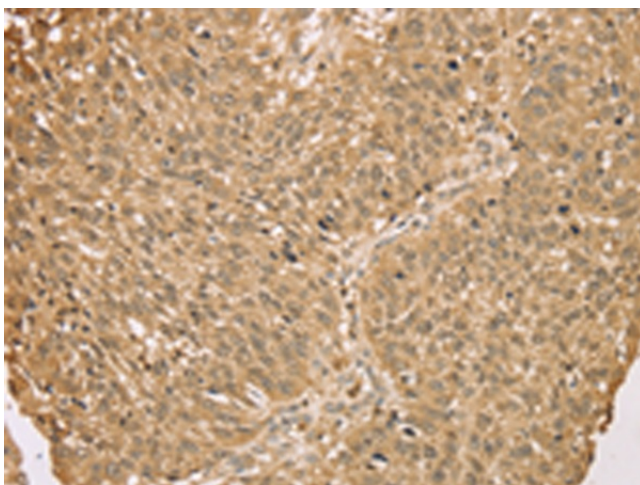
The protein encoded by this gene is a member of the S100 family of proteins containing 2 EF-hand calcium-binding motifs. S100 proteins are localized in the cytoplasm and/or nucleus of a wide range of cells, and involved in the regulation of a number of cellular processes such as cell cycle progression and differentiation. S100 genes include at least 13 members which are located as a cluster on chromosome 1q21. This protein may function in motility, invasion, and tubulin polymerization.

**Synonyms:**

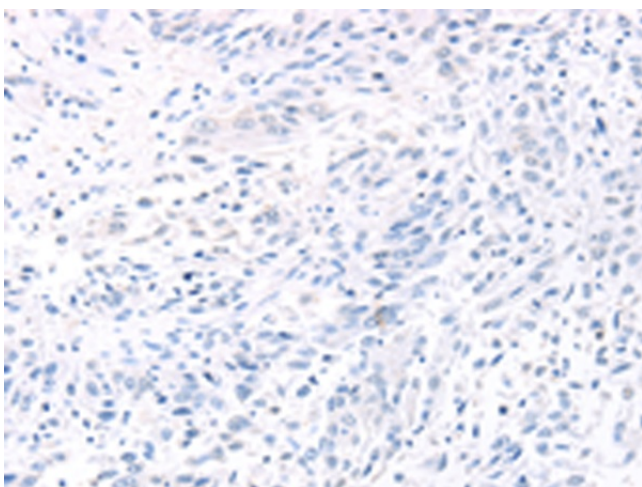
HEL-S-43; MLN70; S100C

**Product images:**

Gel: 12%SDS-PAGE  
Lysate: 40  $\mu$ g  
Lane 1-2: Hepg2 cells  
A549 cells  
Primary antibody: TA350380 (S100A11 Antibody)  
at dilution 1/600  
Secondary antibody: Goat anti rabbit IgG at  
1/8000 dilution  
Exposure time: 1 seconds



Immunohistochemistry of paraffin-embedded  
Human lung cancer tissue using TA350380  
(S100A11 Antibody) at dilution 1/25 (Original  
magnification:  $\times$ 200)



Immunohistochemistry of paraffin-embedded Human lung cancer tissue using TA350380 (S100A11 Antibody) at dilution 1/25, treated with fusion protein. (Original magnification: ×200)