

## Product datasheet for **TA350378S**

### RRBP1 Rabbit Polyclonal Antibody

#### Product data:

Product Type:	Primary Antibodies
Applications:	IHC, WB
Recommended Dilution:	WB: 500-2000 WB positive control: Mouse pancreas tissue, Rat liver tissue lysates IHC: 50-200 Positive control: Human breast cancer Predicted cell location: Cytoplasm
Reactivity:	Human, Mouse, Rat
Host:	Rabbit
Isotype:	IgG
Clonality:	Polyclonal
Immunogen:	Fusion protein of human RRBP1
Formulation:	pH7.4 PBS, 0.05% NaN <sub>3</sub> , 40% Glycerol
Purification:	Antigen affinity purification
Conjugation:	Unconjugated
Storage:	Store at -20°C as received.
Stability:	Stable for 12 months from date of receipt.
Predicted Protein Size:	152 kDa
Gene Name:	ribosome binding protein 1
Database Link:	<a href="#">NP_004578</a> <a href="#">Entrez Gene 81910 Mouse</a> <a href="#">Entrez Gene 311483 Rat</a> <a href="#">Entrez Gene 6238 Human</a> <a href="#">Q9P2E9</a>

**Background:** This gene encodes a ribosome-binding protein of the endoplasmic reticulum (ER) membrane. Studies suggest that this gene plays a role in ER proliferation, secretory pathways and secretory cell differentiation, and mediation of ER-microtubule interactions. Alternative splicing has been observed and protein isoforms are characterized by regions of N-terminal decapeptide and C-terminal heptad repeats. Splicing of the tandem repeats results in variations in ribosome-binding affinity and secretory function.

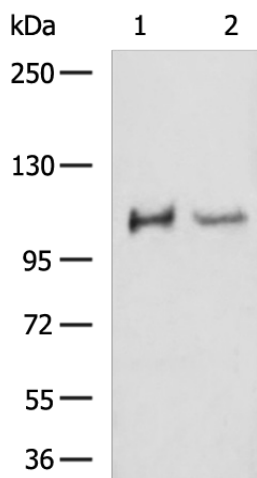


[View online »](#)

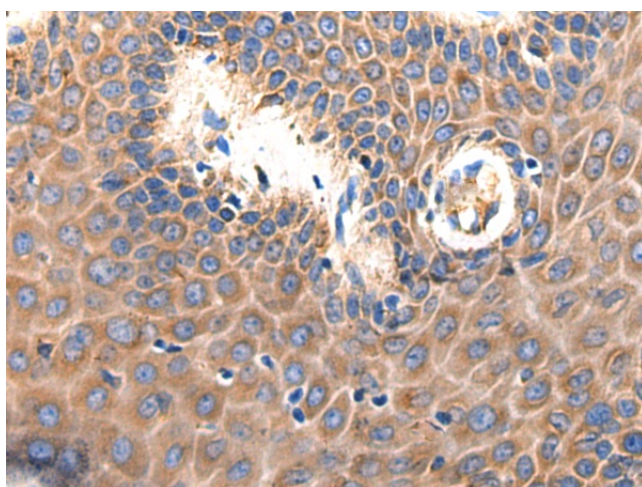
**Synonyms:** 130; ES; ES130; hES; RRp

**Protein Families:** Druggable Genome, Transmembrane

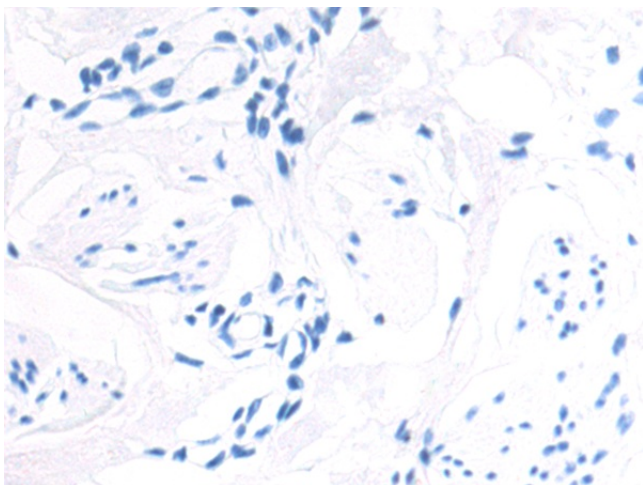
**Product images:**



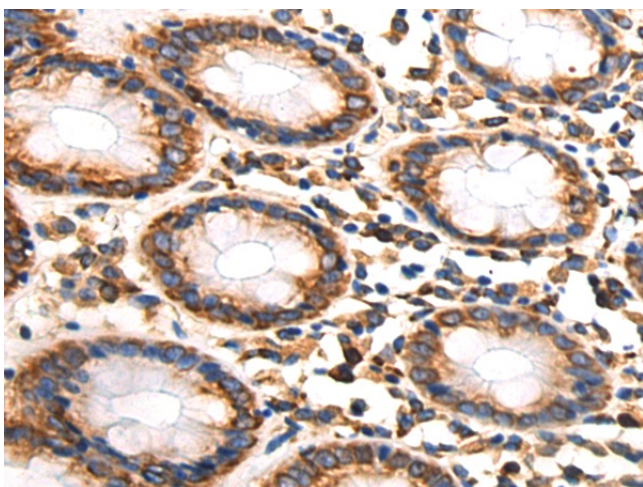
Gel: 6%SDS-PAGE  
 Lysate: 40 µg  
 Lane 1-2: Mouse pancreas tissue  
 Rat liver tissue lysates  
 Primary antibody: [TA350378] (RRBP1 Antibody)  
 at dilution 1/1000  
 Secondary antibody: Goat anti rabbit IgG at  
 1/5000 dilution  
 Exposure time: 30 seconds



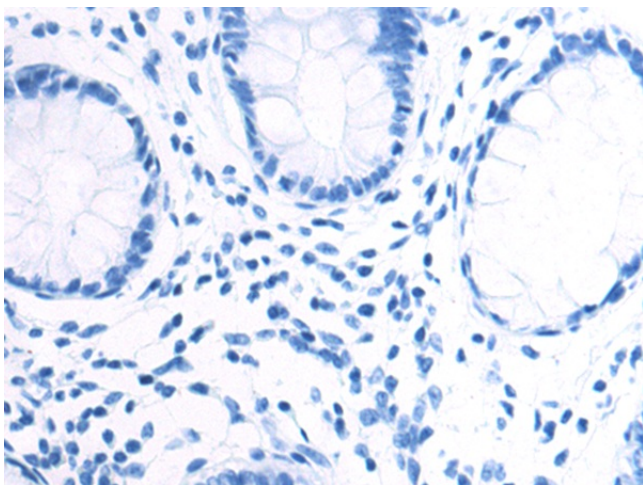
Immunohistochemistry of paraffin-embedded  
 Human breast cancer tissue using [TA350378]  
 (RRBP1 Antibody) at dilution 1/60 (Original  
 magnification: ×200)



Immunohistochemistry of paraffin-embedded Human breast cancer tissue using [TA350378] (RRBP1 Antibody) at dilution 1/60, treated with fusion protein. (Original magnification:  $\times 200$ )



Immunohistochemistry of paraffin-embedded Human colorectal cancer tissue using [TA350378] (RRBP1 Antibody) at dilution 1/60 (Original magnification:  $\times 200$ )



Immunohistochemistry of paraffin-embedded Human colorectal cancer tissue using [TA350378] (RRBP1 Antibody) at dilution 1/60, treated with fusion protein. (Original magnification:  $\times 200$ )