

Product datasheet for **TA350374**

RRAGA Rabbit Polyclonal Antibody

Product data:

Product Type:	Primary Antibodies
Applications:	IHC, WB
Recommended Dilution:	WB: 500-2000 WB positive control: Hepg2 and hela cells IHC: 25-100 Positive control: Human breast cancer Predicted cell location: Cytoplasm
Reactivity:	Human, Mouse, Rat
Host:	Rabbit
Isotype:	IgG
Clonality:	Polyclonal
Immunogen:	Fusion protein of human RRAGA
Formulation:	pH7.4 PBS, 0.05% NaN ₃ , 40% Glycerol
Concentration:	lot specific
Purification:	Antigen affinity purification
Conjugation:	Unconjugated
Storage:	Store at -20°C as received.
Stability:	Stable for 12 months from date of receipt.
Predicted Protein Size:	37 kDa
Gene Name:	Ras related GTP binding A
Database Link:	NP_006561 Entrez Gene 68441 Mouse Entrez Gene 117044 Rat Entrez Gene 10670 Human Q7L523



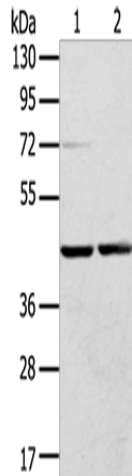
[View online »](#)

Background:

Ras-related GTP-binding protein A is a protein that in humans is encoded by the RRAGA gene. Guanine nucleotide-binding protein forming heterodimeric Rag complexes required for the amino acid-induced relocalization of mTORC1 to the lysosomes and its subsequent activation by the GTPase RHEB. This is a crucial step in the activation of the TOR signaling cascade by amino acids. Involved in the RCC1/Ran-GTPase pathway. May play a direct role in a TNF-alpha signaling pathway leading to induction of cell death.

Synonyms:

FIP-1; FIP1; RAGA

Product images:

Gel: 8%SDS-PAGE

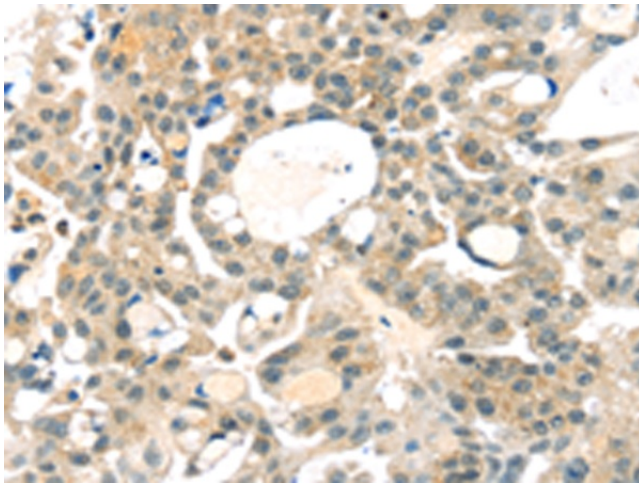
Lysate: 40 µg

Lane 1-2: Hepg2 cells
hela cells

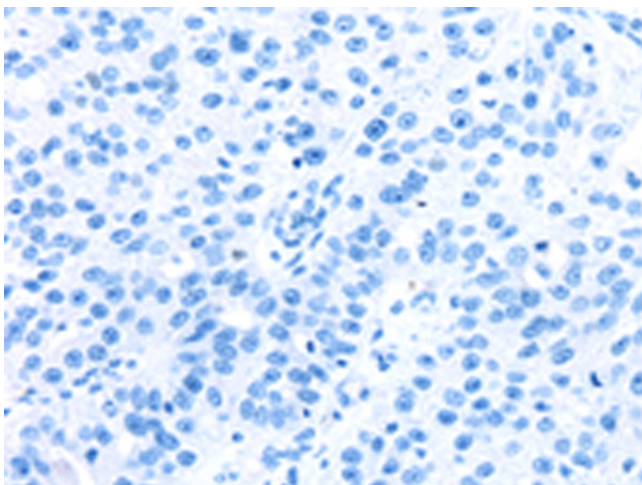
Primary antibody: TA350374 (RRAGA Antibody) at
dilution 1/400

Secondary antibody: Goat anti rabbit IgG at
1/8000 dilution

Exposure time: 3 seconds



Immunohistochemistry of paraffin-embedded
Human breast cancer tissue using TA350374
(RRAGA Antibody) at dilution 1/25 (Original
magnification: x200)



Immunohistochemistry of paraffin-embedded Human breast cancer tissue using TA350374 (RRAGA Antibody) at dilution 1/25, treated with fusion protein. (Original magnification: $\times 200$)