

## Product datasheet for **TA350373**

### RSK1 p90 (RPS6KA1) Rabbit Polyclonal Antibody

#### Product data:

Product Type:	Primary Antibodies
Applications:	IHC, WB
Recommended Dilution:	WB: 500-2000 WB positive control: 231 cells IHC: 30-150 Positive control: Human liver cancer Predicted cell location: Cytoplasm
Reactivity:	Human, Mouse, Rat
Host:	Rabbit
Isotype:	IgG
Clonality:	Polyclonal
Immunogen:	Fusion protein of human RPS6KA1
Formulation:	pH7.4 PBS, 0.05% NaN <sub>3</sub> , 40% Glycerol
Concentration:	lot specific
Purification:	Antigen affinity purification
Conjugation:	Unconjugated
Storage:	Store at -20°C as received.
Stability:	Stable for 12 months from date of receipt.
Predicted Protein Size:	83 kDa
Gene Name:	ribosomal protein S6 kinase A1
Database Link:	<a href="#">NP_002944</a> <a href="#">Entrez Gene 20111 Mouse</a> <a href="#">Entrez Gene 81771 Rat</a> <a href="#">Entrez Gene 6195 Human</a> <a href="#">Q15418</a>



[View online »](#)

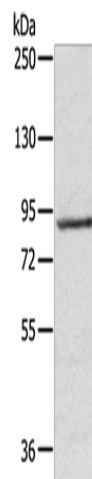
**Background:** This gene encodes a member of the RSK (ribosomal S6 kinase) family of serine/threonine kinases. This kinase contains 2 nonidentical kinase catalytic domains and phosphorylates various substrates, including members of the mitogen-activated kinase (MAPK) signalling pathway. The activity of this protein has been implicated in controlling cell growth and differentiation. Alternate transcriptional splice variants, encoding different isoforms, have been characterized.

**Synonyms:** HU-1; MAPKAPK1A; p90Rsk; RSK; RSK1

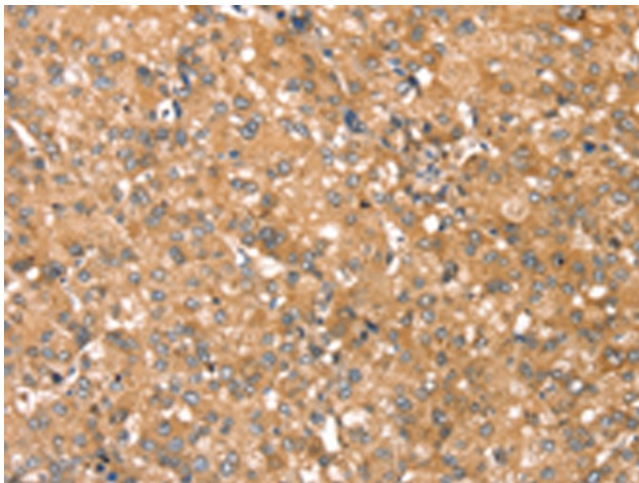
**Protein Families:** Druggable Genome, Protein Kinase

**Protein Pathways:** Long-term potentiation, MAPK signaling pathway, mTOR signaling pathway, Neurotrophin signaling pathway, Oocyte meiosis, Progesterone-mediated oocyte maturation

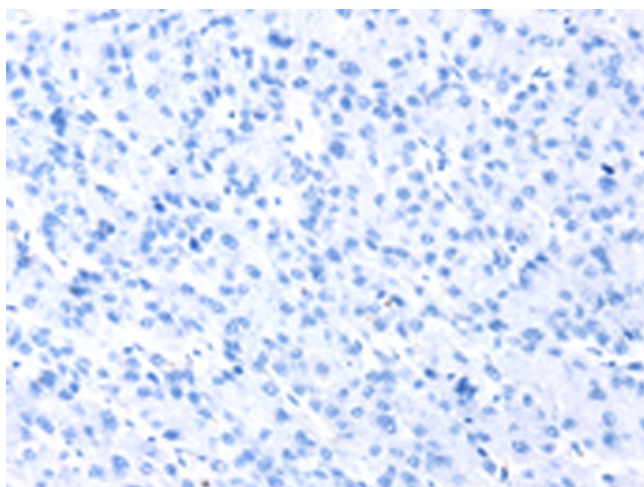
### Product images:



Gel: 6%SDS-PAGE  
Lysate: 40 µg  
Lane: 231 cells  
Primary antibody: TA350373 (RPS6KA1 Antibody) at dilution 1/800  
Secondary antibody: Goat anti rabbit IgG at 1/8000 dilution  
Exposure time: 30 seconds



Immunohistochemistry of paraffin-embedded Human liver cancer tissue using TA350373 (RPS6KA1 Antibody) at dilution 1/45 (Original magnification: ×200)



Immunohistochemistry of paraffin-embedded Human liver cancer tissue using TA350373 (RPS6KA1 Antibody) at dilution 1/45, treated with fusion protein. (Original magnification: ×200)